

Part No. 206379-A
September 1999

4401 Great America Parkway
Santa Clara, CA 95054

Installation and Reference for the BayStack 21 PCI 10/100 Adapter w/WOL

NORTEL
NETWORKS™

Copyright © 1999 Nortel Networks.

All rights reserved. September 1999.

The information in this document is subject to change without notice. The statements, configurations, technical data, and recommendations in this document are believed to be accurate and reliable, but are presented without express or implied warranty. Users must take full responsibility for their applications of any products specified in this document. The information in this document is proprietary to Nortel Networks NA Inc.

Trademarks

NORTEL NETWORKS is a trademark of Nortel Networks.

Bay Networks is a registered trademark and BayStack and the Nortel Networks logo are trademarks of Nortel Networks.

Microsoft, Windows, and Windows NT are registered trademarks of Microsoft Corporation.

All other trademarks and registered trademarks are the property of their respective owners.

USA Requirements Only

Federal Communications Commission (FCC) Compliance Notice: Radio Frequency Notice

This device complies with Part 15 of the FCC Rules. Operation is subject to the following two conditions:

- This device may not cause harmful interference.
- This device must accept any interference received, including interference that may cause undesired operation.

Note: This equipment has been tested and found to comply with the limits for a Class B digital device, pursuant to Part 15 of the FCC Rules. These limits are designed to provide reasonable protection against harmful interference in a residential installation. This equipment generates, uses and can radiate radio frequency energy and, if not installed and used in accordance with the instructions, may cause harmful interference to radio communications. However, there is no guarantee that interference will not occur in a particular installation. If this equipment does cause harmful interference to radio or television reception, which can be determined by turning the equipment off and on, the user is encouraged to try to correct the interference by one or more of the following measures:

- Reorient or relocate the receiving antenna.
- Increase the separation between the equipment and receiver.
- Connect the equipment into an outlet on a circuit different from that to which the receiver is connected.
- Consult the dealer or an experienced radio/TV technician for help.

EN 55 022 Statement

This is to certify that the Nortel Networks BayStack 21 PCI 10/100 Adapter w/WOL is shielded against the generation of radio interference in accordance with the application of Council Directive 89/336/EEC, Article 4a. Conformity is declared by the application of EN 55 022 Class B (CISPR 22).

Warning: This is a Class A product. In a domestic environment, this product may cause radio interference, in which case, the user may be required to take appropriate measures.

EC Declaration of Conformity

This product conforms to the provisions of Council Directive 89/336/EEC and 73/23/EEC. The Declaration of Conformity is available on the Nortel Networks World Wide Web site at <http://libra2.corpwest.baynetworks.com/cgi-bin/ndCGL.exe/DocView/>.

Voluntary Control Council for Interference (VCCI) Statement

この装置は、情報処理装置等電波障害自主規制協議会（VCCI）の基準に基づくクラス A 情報技術装置です。この装置を家庭環境で使用すると電波妨害を引き起こすことがあります。この場合には使用者が適切な対策を講ずるよう要求されることがあります。

Voluntary Control Council for Interference (VCCI) Statement

This is a Class A product based on the standard of the Voluntary Control Council for Interference by Information Technology Equipment (VCCI). If this equipment is used in a domestic environment, radio disturbance may arise. When such trouble occurs, the user may be required to take corrective actions.

Canadian Department of Communications Radio Interference Regulations

This digital apparatus (BayStack 21 PCI 10/100 Adapter w/WOL) do not exceed the Class A limits for radio-noise emissions from digital apparatus as set out in the Radio Interference Regulations of the Canadian Department of Communications.

Règlement sur le brouillage radioélectrique du ministère des Communications

Cet appareil numérique (BayStack 21 PCI 10/100 Adapter w/WOL) respecte les limites de bruits radioélectriques visant les appareils numériques de classe A prescrites dans le Règlement sur le brouillage radioélectrique du ministère des Communications du Canada.

Electromagnetic Interference (EMI) Statement

TAIWANESE BCIQ A Warning

警告使用者

這是甲類的資訊產品，在居住的環境中使用時，可能會造成射頻干擾，在這種情況下使用者會被要求採取某些適當的對策。

Wichtige Sicherheitshinweise

1. Bitte lesen Sie diese Hinweise sorgfältig durch.
2. Heben Sie diese Anleitung für den späteren Gebrauch auf.
3. Vor jedem Reinigen ist das Gerät vom Stromnetz zu trennen. Verwenden Sie keine Flüssig- oder Aerosolreiniger. Am besten eignet sich ein angefeuchtetes Tuch zur Reinigung.
4. Um eine Beschädigung des Gerätes zu vermeiden sollten Sie nur Zubehöreile verwenden, die vom Hersteller zugelassen sind.
5. Das Gerät ist vor Feuchtigkeit zu schützen.
6. Bei der Aufstellung des Gerätes ist auf sicheren Stand zu achten. Ein Kippen oder Fallen könnte Verletzungen hervorrufen. Verwenden Sie nur sichere Standorte und beachten Sie die Aufstellhinweise des Herstellers.
7. Die Belüftungsoffnungen dienen der Luftzirkulation, die das Gerät vor Überhitzung schützt. Sorgen Sie dafür, daß diese Öffnungen nicht abgedeckt werden.
8. Beachten Sie beim Anschluß an das Stromnetz die Anschlußwerte.
9. Die Netzanschlussteckdose muß aus Gründen der elektrischen Sicherheit einen Schutzleiterkontakt haben.
10. Verlegen Sie die Netzanschlußleitung so, daß niemand darüber fallen kann. Es sollte auch nichts auf der Leitung abgestellt werden.
11. Alle Hinweise und Warnungen, die sich am Gerät befinden, sind zu beachten.
12. Wird das Gerät über einen längeren Zeitraum nicht benutzt, sollten Sie es vom Stromnetz trennen. Somit wird im Falle einer Überspannung eine Beschädigung vermieden.
13. Durch die Lüftungsoffnungen dürfen niemals Gegenstände oder Flüssigkeiten in das Gerät gelangen. Dies könnte einen Brand bzw. elektrischen Schlag auslösen.
14. Öffnen Sie niemals das Gerät. Das Gerät darf aus Gründen der elektrischen Sicherheit nur von autorisiertem Servicepersonal geöffnet werden.

-
15. Wenn folgende Situationen auftreten ist das Gerät vom Stromnetz zu trennen und von einer qualifizierten Servicestelle zu überprüfen:
 - a. Netzkabel oder Netzstecker sind beschädigt.
 - b. Flüssigkeit ist in das Gerät eingedrungen.
 - c. Das Gerät war Feuchtigkeit ausgesetzt.
 - d. Wenn das Gerät nicht der Bedienungsanleitung entsprechend funktioniert oder Sie mit Hilfe dieser Anleitung keine Verbesserung erzielen.
 - e. Das Gerät ist gefallen und/oder das Gehäuse ist beschädigt.
 - f. Wenn das Gerät deutliche Anzeichen eines Defektes aufweist.
 16. Bei Reparaturen dürfen nur Originalersatzteile bzw. den Originalteilen entsprechende Teile verwendet werden. Der Einsatz von ungeeigneten Ersatzteilen kann eine weitere Beschädigung hervorrufen.
 17. Bei Reparaturen dürfen nur Originalersatzteile bzw. den Originalteilen entsprechende Teile verwendet werden. Der Einsatz von ungeeigneten Ersatzteilen kann eine weitere Beschädigung hervorrufen.
 18. Wenden Sie sich mit allen Fragen die Service und Reparatur betreffen an Ihren Servicepartner. Somit stellen Sie die Betriebssicherheit des Gerätes sicher.
 19. Zum Netzanschluß dieses Gerätes ist eine geprüfte Leitung zu verwenden. Für einen Nennstrom bis 6A und einem Gerätegewicht größer 3kg ist eine Leitung nicht leichter als H05VV-F, 3G, 0.75mm² einzusetzen. Der arbeitsplatzbezogene Schalldruckpegel nach DIN 45 635 Teil 1000 beträgt 70dB(A) oder weniger.

Restricted Rights Legend

Use, duplication, or disclosure by the United States Government is subject to restrictions as set forth in subparagraph (c)(1)(ii) of the Rights in Technical Data and Computer Software clause at DFARS 252.227-7013.

Notwithstanding any other license agreement that may pertain to, or accompany the delivery of, this computer software, the rights of the United States Government regarding its use, reproduction, and disclosure are as set forth in the Commercial Computer Software-Restricted Rights clause at FAR 52.227-19.

Statement of Conditions

In the interest of improving internal design, operational function, and/or reliability, Nortel Networks NA Inc. reserves the right to make changes to the products described in this document without notice.

Nortel Networks NA Inc. does not assume any liability that may occur due to the use or application of the product(s) or circuit layout(s) described herein.

Portions of the code in this software product are Copyright © 1988, Regents of the University of California. All rights reserved. Redistribution and use in source and binary forms of such portions are permitted, provided that the above copyright notice and this paragraph are duplicated in all such forms and that any documentation, advertising materials, and other materials related to such distribution and use acknowledge that such portions of the software were developed by the University of California, Berkeley. The name of the University may not be used to endorse or promote products derived from such portions of the software without specific prior written permission.

SUCH PORTIONS OF THE SOFTWARE ARE PROVIDED "AS IS" AND WITHOUT ANY EXPRESS OR IMPLIED WARRANTIES, INCLUDING, WITHOUT LIMITATION, THE IMPLIED WARRANTIES OF MERCHANTABILITY AND FITNESS FOR A PARTICULAR PURPOSE.

Nortel Networks NA Inc. Software License Agreement

NOTICE: Please carefully read this license agreement before copying or using the accompanying software or installing the hardware unit with pre-enabled software (each of which is referred to as “Software” in this Agreement). BY COPYING OR USING THE SOFTWARE, YOU ACCEPT ALL OF THE TERMS AND CONDITIONS OF THIS LICENSE AGREEMENT. THE TERMS EXPRESSED IN THIS AGREEMENT ARE THE ONLY TERMS UNDER WHICH NORTEL NETWORKS WILL PERMIT YOU TO USE THE SOFTWARE. If you do not accept these terms and conditions, return the product, unused and in the original shipping container, within 30 days of purchase to obtain a credit for the full purchase price.

1. License Grant. Nortel Networks NA Inc. (“Nortel Networks”) grants the end user of the Software (“Licensee”) a personal, nonexclusive, nontransferable license: a) to use the Software either on a single computer or, if applicable, on a single authorized device identified by host ID, for which it was originally acquired; b) to copy the Software solely for backup purposes in support of authorized use of the Software; and c) to use and copy the associated user manual solely in support of authorized use of the Software by Licensee. This license applies to the Software only and does not extend to Nortel Networks Agent software or other Nortel Networks software products. Nortel Networks Agent software or other Nortel Networks software products are licensed for use under the terms of the applicable Nortel Networks NA Inc. Software License Agreement that accompanies such software and upon payment by the end user of the applicable license fees for such software.

2. Restrictions on use; reservation of rights. The Software and user manuals are protected under copyright laws. Nortel Networks and/or its licensors retain all title and ownership in both the Software and user manuals, including any revisions made by Nortel Networks or its licensors. The copyright notice must be reproduced and included with any copy of any portion of the Software or user manuals. Licensee may not modify, translate, decompile, disassemble, use for any competitive analysis, reverse engineer, distribute, or create derivative works from the Software or user manuals or any copy, in whole or in part. Except as expressly provided in this Agreement, Licensee may not copy or transfer the Software or user manuals, in whole or in part. The Software and user manuals embody Nortel Networks’ and its licensors’ confidential and proprietary intellectual property. Licensee shall not sublicense, assign, or otherwise disclose to any third party the Software, or any information about the operation, design, performance, or implementation of the Software and user manuals that is confidential to Nortel Networks and its licensors; however, Licensee may grant permission to its consultants, subcontractors, and agents to use the Software at Licensee’s facility, provided they have agreed to use the Software only in accordance with the terms of this license.

3. Limited warranty. Nortel Networks warrants each item of Software, as delivered by Nortel Networks and properly installed and operated on Nortel Networks hardware or other equipment it is originally licensed for, to function substantially as described in its accompanying user manual during its warranty period, which begins on the date Software is first shipped to Licensee. If any item of Software fails to so function during its warranty period, as the sole remedy Nortel Networks will at its discretion provide a suitable fix, patch, or workaround for the problem that may be included in a future Software release. Nortel Networks further warrants to Licensee that the media on which the Software is provided will be free from defects in materials and workmanship under normal use for a period of 90 days from the date Software is first shipped to Licensee. Nortel Networks will replace defective media at no charge if it is returned to Nortel Networks during the warranty period along with proof of the date of shipment. This warranty does not apply if the media has been damaged as a result of accident, misuse, or abuse. The Licensee assumes all responsibility for selection of the Software to achieve Licensee’s intended results and for the installation, use, and results obtained from the Software. Nortel Networks does not warrant a) that the functions contained in the software will meet the Licensee’s requirements, b) that the Software will operate in the hardware or software combinations that the Licensee may select, c) that the operation of the Software will be uninterrupted or error free, or d) that all defects in the operation of the Software will be corrected. Nortel Networks is not obligated to remedy any Software defect that cannot be reproduced with the latest Software release. These warranties do not apply to the Software if it has been (i) altered, except by Nortel Networks or in accordance with its instructions; (ii) used in conjunction with another

vendor's product, resulting in the defect; or (iii) damaged by improper environment, abuse, misuse, accident, or negligence. THE FOREGOING WARRANTIES AND LIMITATIONS ARE EXCLUSIVE REMEDIES AND ARE IN LIEU OF ALL OTHER WARRANTIES EXPRESS OR IMPLIED, INCLUDING WITHOUT LIMITATION ANY WARRANTY OF MERCHANTABILITY OR FITNESS FOR A PARTICULAR PURPOSE. Licensee is responsible for the security of its own data and information and for maintaining adequate procedures apart from the Software to reconstruct lost or altered files, data, or programs.

4. Limitation of liability. IN NO EVENT WILL NORTEL NETWORKS OR ITS LICENSORS BE LIABLE FOR ANY COST OF SUBSTITUTE PROCUREMENT; SPECIAL, INDIRECT, INCIDENTAL, OR CONSEQUENTIAL DAMAGES; OR ANY DAMAGES RESULTING FROM INACCURATE OR LOST DATA OR LOSS OF USE OR PROFITS ARISING OUT OF OR IN CONNECTION WITH THE PERFORMANCE OF THE SOFTWARE, EVEN IF NORTEL NETWORKS HAS BEEN ADVISED OF THE POSSIBILITY OF SUCH DAMAGES. IN NO EVENT SHALL THE LIABILITY OF NORTEL NETWORKS RELATING TO THE SOFTWARE OR THIS AGREEMENT EXCEED THE PRICE PAID TO NORTEL NETWORKS FOR THE SOFTWARE LICENSE.

5. Government Licensees. This provision applies to all Software and documentation acquired directly or indirectly by or on behalf of the United States Government. The Software and documentation are commercial products, licensed on the open market at market prices, and were developed entirely at private expense and without the use of any U.S. Government funds. The license to the U.S. Government is granted only with restricted rights, and use, duplication, or disclosure by the U.S. Government is subject to the restrictions set forth in subparagraph (c)(1) of the Commercial Computer Software—Restricted Rights clause of FAR 52.227-19 and the limitations set out in this license for civilian agencies, and subparagraph (c)(1)(ii) of the Rights in Technical Data and Computer Software clause of DFARS 252.227-7013, for agencies of the Department of Defense or their successors, whichever is applicable.

6. Use of Software in the European Community. This provision applies to all Software acquired for use within the European Community. If Licensee uses the Software within a country in the European Community, the Software Directive enacted by the Council of European Communities Directive dated 14 May, 1991, will apply to the examination of the Software to facilitate interoperability. Licensee agrees to notify Nortel Networks of any such intended examination of the Software and may procure support and assistance from Nortel Networks.

7. Term and termination. This license is effective until terminated; however, all of the restrictions with respect to Nortel Networks' copyright in the Software and user manuals will cease being effective at the date of expiration of the Nortel Networks copyright; those restrictions relating to use and disclosure of Nortel Networks' confidential information shall continue in effect. Licensee may terminate this license at any time. The license will automatically terminate if Licensee fails to comply with any of the terms and conditions of the license. Upon termination for any reason, Licensee will immediately destroy or return to Nortel Networks the Software, user manuals, and all copies. Nortel Networks is not liable to Licensee for damages in any form solely by reason of the termination of this license.

8. Export and Re-export. Licensee agrees not to export, directly or indirectly, the Software or related technical data or information without first obtaining any required export licenses or other governmental approvals. Without limiting the foregoing, Licensee, on behalf of itself and its subsidiaries and affiliates, agrees that it will not, without first obtaining all export licenses and approvals required by the U.S. Government: (i) export, re-export, transfer, or divert any such Software or technical data, or any direct product thereof, to any country to which such exports or re-exports are restricted or embargoed under United States export control laws and regulations, or to any national or resident of such restricted or embargoed countries; or (ii) provide the Software or related technical data or information to any military end user or for any military end use, including the design, development, or production of any chemical, nuclear, or biological weapons.

9. General. If any provision of this Agreement is held to be invalid or unenforceable by a court of competent jurisdiction, the remainder of the provisions of this Agreement shall remain in full force and effect. This Agreement will be governed by the laws of the state of California.

Should you have any questions concerning this Agreement, contact Nortel Networks, 4401 Great America Parkway, P.O. Box 58185, Santa Clara, California 95054-8185.

LICENSEE ACKNOWLEDGES THAT LICENSEE HAS READ THIS AGREEMENT, UNDERSTANDS IT, AND AGREES TO BE BOUND BY ITS TERMS AND CONDITIONS. LICENSEE FURTHER AGREES THAT THIS AGREEMENT IS THE ENTIRE AND EXCLUSIVE AGREEMENT BETWEEN NORTEL NETWORKS AND LICENSEE, WHICH SUPERSEDES ALL PRIOR ORAL AND WRITTEN AGREEMENTS AND COMMUNICATIONS BETWEEN THE PARTIES PERTAINING TO THE SUBJECT MATTER OF THIS AGREEMENT. NO DIFFERENT OR ADDITIONAL TERMS WILL BE ENFORCEABLE AGAINST NORTEL NETWORKS UNLESS NORTEL NETWORKS GIVES ITS EXPRESS WRITTEN CONSENT, INCLUDING AN EXPRESS WAIVER OF THE TERMS OF THIS AGREEMENT.

Contents

Preface

Before You Begin	xvii
Text Conventions	xvii
Technical Publications	xviii
How to Get Help	xviii

Chapter 1

Introduction

BayStack 21 PCI Network Interface Card Overview	1-1
Product Features	1-2
Product Description	1-2
BayStack 21 Network Card	1-2
RJ-45 Ethernet Port	1-2
LEDs	1-3
WOL Cable and Connector	1-4
System Requirements	1-5
Operating Environments	1-5
Cable Requirements	1-6
Fast Ethernet Cables (100 Mb/s)	1-6
Ethernet Cables (10 Mb/s)	1-6

Chapter 2

Hardware Installation

Package Contents	2-1
Installing the BayStack 21 PCI Network Interface Card	2-2
Connecting the WOL Cable	2-3

Chapter 3

Software Installation

Preinstallation	3-2
Installing the Network Driver in a Windows 95 Environment	3-2
Configuring the Windows 95 Environment	3-6
Configuring the Workstation Identification	3-6
Configuring the Network Properties	3-8
Installing the Network Driver in a Windows 98 Environment	3-12
Configuring the Windows 98 Environment	3-16
Configuring the Network Properties	3-16
Installing the Network Driver in a Windows NT Environment	3-18
Configuring the Network Properties	3-21
Installing the Network Driver in a Novell NetWare 4.x Environment	3-23
Installing the Network Driver in a Novell NetWare Server	3-23
Specifying Driver Parameters	3-24
Installing the Network Card in a Novell NetWare Client	3-25

Chapter 4

Using the WOL Feature

Setting Up the Workstation	4-1
Running the WOL Feature	4-2

Chapter 5

Troubleshooting

Diagnostic LEDs	5-1
Hardware Issues	5-2
Software Issues	5-2

Appendix A

Technical Specifications

Product Specifications	A-1
Software Drivers	A-2

Appendix B

Novell NetWare Reference Information

Novell NetWare Server AUTOEXEC.NCF Files and Parameters	B-1
Sample AUTOEXEC.NCF Files	B-1
Sample AUTOEXEC.NCF File Parameters	B-3
Novell NetWare Client Commands and NET.CFG File	B-5
Client Commands	B-5
Sample NET.CFG Files	B-5

Index

Figures

Figure 1-1.	Link and Activity LEDs	1-3
Figure 1-2.	WOL Cable	1-4
Figure 1-3.	WOL Connector	1-4
Figure 3-1.	New Hardware Found Window—Generic	3-2
Figure 3-2.	New Hardware Found Window—BayStack 21 Network Card	3-3
Figure 3-3.	Update Device Driver Wizard Dialog Box—Generic	3-3
Figure 3-4.	Update Device Driver Wizard Dialog Box—BayStack 21 Network Card ..	3-4
Figure 3-5.	Copying Files Dialog Box	3-5
Figure 3-6.	Network Dialog Box—Identification Tab	3-6
Figure 3-7.	System Settings Change Dialog Box	3-7
Figure 3-8.	Network Dialog Box—Configuration Tab	3-8
Figure 3-9.	Select Network Component Type Dialog Box	3-9
Figure 3-10.	Select Network Protocol Dialog Box	3-9
Figure 3-11.	Configuration Tab, BayStack 21 Network Card Selected	3-10
Figure 3-12.	TCP/IP Properties Dialog Box	3-11
Figure 3-13.	New Hardware Found Window—Generic	3-12
Figure 3-14.	New Hardware Found Window—BayStack 21 Network Card	3-13
Figure 3-15.	Copying Files Dialog Box	3-13
Figure 3-16.	Copying Files Dialog Box	3-14
Figure 3-17.	New Hardware Found Dialog Box	3-14
Figure 3-18.	System Settings Change Dialog Box	3-15
Figure 3-19.	Network Dialog Box—Configuration Tab	3-16
Figure 3-20.	TCP/IP Properties Dialog Box	3-17
Figure 3-21.	Network Dialog Box—Adapters Tab	3-18
Figure 3-22.	Select Network Adapter Dialog Box	3-19
Figure 3-23.	Select OEM Option Dialog Box	3-20
Figure 3-24.	Speed/Duplex Mode Dialog Box	3-20
Figure 3-25.	Network Dialog Box—Protocols Tab	3-21

Figure 3-26. Microsoft TCP/IP Properties Dialog Box3-22

Figure 4-1. Magic Packet Utility Window4-2

Figure 4-2. Create a List of Hosts on LAN Dialog Box4-2

Figure 4-3. Magic Packet Utility Identification Window4-3

Figure 4-4. NewGroup Window4-3

Figure 4-5. Send a Magic Packet to One Host Dialog Box4-4

Tables

Table 1-1. LED Indications 1-3

Table 1-2. Supported Operating Systems 1-5

Table 5-1. LED Indications 5-1

Table 5-2. Typical PCI Slot Parameters 5-3

Table A-1. Technical Specifications A-1

Table A-2. Available Software Drivers A-2

Table B-1. Commands B-5

Congratulations on your purchase of a BayStack™ PC network card adapter, the BayStack 21 PCI 10/100 Adapter w/WOL, which supports workgroups operating at 10 Mb/s and/or 100 Mb/s transmission speeds. This network card is intended for use in a desktop workstation. You can use a similar product, the BayStack 22 PC Card Adapter, in a portable (laptop) computer.

Before You Begin

This guide provides information about using the features and capabilities of the BayStack 21 PCI 10/100 Adapter w/WOL.

This guide is intended for Ethernet local area network (LAN) administrators with the following background:

- Working knowledge of PC terminology and operation
- Working knowledge of 10BASE-T (Ethernet) and 100BASE-TX (Fast Ethernet) operations
- Nortel Networks™ network experience

Text Conventions

This guide uses the following text conventions:

bold text	Indicates command names and options and text that you need to enter. Example: Enter a:\ .
separator (>)	Shows menu paths. Example: From the Windows taskbar, choose Start > Settings > Control Panel.

Technical Publications

You can print selected technical manuals and release notes free, directly from the Internet. Go to *support.baynetworks.com/library/tpubs/*. Find the product for which you need documentation. Then locate the specific category and model or version for your hardware or software product. Using Adobe Acrobat Reader, you can open the manuals and release notes, search for the sections you need, and print them on most standard printers. You can download Acrobat Reader free from the Adobe Systems Web site, *www.adobe.com*.

How to Get Help

If you purchased a service contract for your Nortel Networks product from a distributor or authorized reseller, contact the technical support staff for that distributor or reseller for assistance.

If you purchased a Nortel Networks service program, contact one of the following Nortel Networks Technical Solutions Centers:

Technical Solutions Center	Telephone Number
Billerica, MA	800-2LANWAN (800-252-6926)
Santa Clara, CA	800-2LANWAN (800-252-6926)
Valbonne, France	33-4-92-96-69-68
Sydney, Australia	61-2-9927-8800
Tokyo, Japan	81-3-5402-7041

Chapter 1

Introduction

This chapter provides an overview of the BayStack 21 PCI 10/100 Adapter w/WOL, including its hardware and software components. The BayStack 21 PCI 10/100 Adapter w/WOL complements the BayStack 70-Series 10/100 Ethernet Switches and BayStack 60-Series 10/100 Ethernet Hubs.



Note: BayStack 21 PCI 10/100 Adapter w/WOL is sometimes also referred to as the BayStack 21 network card in this document.

BayStack 21 PCI 10/100 Adapter w/WOL Overview

You can install the BayStack 21 PCI 10/100 Adapter w/WOL in the workstations, desktops, or servers of Microsoft® Windows® 95, Windows 98, or Windows NT® users. The network card provides connectivity to the network using the Wake On LAN (WOL) feature, an open standard Advanced Configuration Power Interface (ACPI) function. The standard provides power management support systems through hardware and operating system integration. The motherboard of the workstation must have an ACPI architecture to support this feature.

The WOL feature allows you to turn on a remote workstation. When installed in a workstation that has been turned off, the BayStack 21 network card monitors LAN traffic for valid wake-up frames. When the network card receives the correctly addressed wake-up frame, it sends a signal to the motherboard to turn on the workstation.

Information Technology (IT) organizations sometimes prefer to perform tasks such as installing software, running virus scans, and backing up disk drives during nonbusiness hours to avoid interrupting users during prime usage times. Although organizations may use remote software installation tools or other automated software, IT personnel may have to turn on each workstation for the software to run. This use of IT resources is inefficient and expensive.

The remote wake-up feature gives IT personnel the ability to turn workstations on remotely. You can use the wake-up capability to turn remote machines on automatically, thus further decreasing IT personnel tasks. Workstations that have been turned on can be directed to run virus scans or software upgrades and then to return to a turned off mode. This combination of remote access and automatic wake-up feature saves IT personnel time and increases user productivity by avoiding delays and disruptions during work hours.

Product Features

The BayStack 21 PCI 10/100 Adapter w/WOL provides the following features:

- Plug-and-play installation for Windows 95 and Windows 98
- 10/100 autonegotiation
- Wake on LAN (WOL) capability

Product Description

The BayStack 21 PCI 10/100 Adapter w/WOL is a standard-size PC card. The WOL cable allows you to connect the network card to your workstation and enable the WOL feature.

BayStack 21 Network Card

The BayStack 21 PCI 10/100 Adapter w/WOL includes the following components:

- RJ-45 port
- 10 megabits per second (Mb/s) and 100 Mb/s Link LEDs
- Activity LED
- WOL cable and connector

RJ-45 Ethernet Port

The RJ-45 10BASE-T/100BASE-TX Ethernet port connects the network card to a network device, such as a hub. The port adapts to the correct network speed of 10 Mb/s or 100 Mb/s through autonegotiation with the board components of the network card. The port is wired as an MDI-X port to connect to other devices without using a crossover cable.

LEDs

The front of the BayStack 21 network card contains three LEDs ([Figure 1-1](#)).

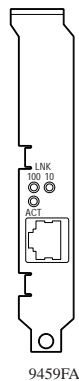


Figure 1-1. Link and Activity LEDs

The 10 Mb/s and 100 Mb/s Link LEDs indicate successful network connections to Ethernet and Fast Ethernet devices, respectively. The Link LEDs remain steady if the connection is stable. You should check the RJ-45 connection if the LED is not steady. The Activity LED indicates active network traffic.

[Table 1-1](#) describes the Link and Activity LED indications.

Table 1-1. LED Indications

Label	Color	Activity	Description
10 LNK	Green	On	A 10 Mb/s connection has been established.
		Off	Power is not supplied to the network card, or a 10 Mb/s connection is not established.
100 LNK	Green	On	A 100 Mb/s connection has been established.
		Off	Power is not supplied to the network card, or a 100 Mb/s connection is not established.
ACT	Green	On	Heavy network traffic is passing through the port.
		Blinking	Intermittent or light network traffic is passing through the port. The rate of blinking is proportional to the amount of network traffic.

WOL Cable and Connector

The WOL cable ([Figure 1-2](#)) is an interconnect cable with standard 3-pin connectors on each end.

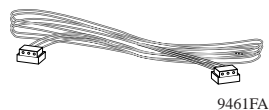


Figure 1-2. WOL Cable

The WOL cable includes the following three wires:

- A network card auxiliary power supply line, which maintains constant low-level power to the motherboard
- A card wake-up signal line, which turns on the workstation remotely
- A ground line, which provides electrical grounding

One end of the cable connects to the motherboard of your workstation. The other end attaches to the WOL connector ([Figure 1-3](#)) on the board of the BayStack 21 network card.

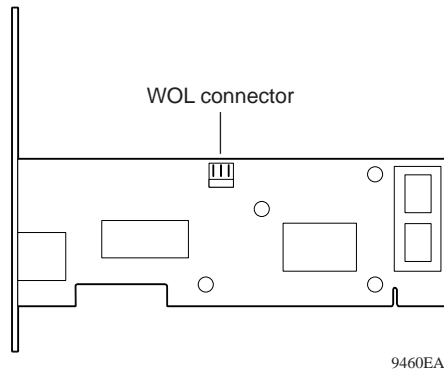


Figure 1-3. WOL Connector

System Requirements

Workstations using the BayStack 21 PCI 10/100 Adapter w/WOL must meet the following requirements:

- Microsoft Windows 95, Windows 98, or Windows NT
- PCI expansion slot with bus mastering capability

Operating Environments

The BayStack 21 network card supports the operating systems and associated drivers listed in [Table 1-2](#).

Table 1-2. Supported Operating Systems

Driver	Operating Systems
ODI Drivers	<ul style="list-style-type: none">• Novell NetWare 3.12, 4.1, 4.11• Novell LAN Analyzer
NDIS 2.0 Drivers	<ul style="list-style-type: none">• Microsoft LAN Manager• IBM LAN Server• IBM LAN Support• DEC PATHWORKS
NDIS 3.0 Drivers	<ul style="list-style-type: none">• Windows for Workgroups 3.11• Windows 95• Windows NT 3.51
NDIS 4.0 Drivers	<ul style="list-style-type: none">• Windows 95 OSR2, 98, NT 4.0
NDIS 5.0 Drivers	<ul style="list-style-type: none">• Windows 98
Packet Drivers	<ul style="list-style-type: none">• FTP PC/TCP• NCSA TCP/IP
UNIX Drivers	<ul style="list-style-type: none">• SCO UNIX• Linux

Cable Requirements

You can use Category 5 (Cat 5) Ethernet cables for 10 Mb/s and 100 Mb/s network connections to the BayStack 21 network card.

Use the following guidelines when using Cat 5 cables:

- Maximum length between a workstation and a hub is 100 meters (m).
- Maximum length between two hubs is 10 m.
- Maximum length between two hubs which are functioning as Ethernet Class 2 Repeaters is 100 m.
- Maximum total length between two workstations is 205 m.

Fast Ethernet Cables (100 Mb/s)

You must use a Cat 5 straight-through cable with one RJ-45 connector on each end for 100 Mb/s Ethernet connections. Do not use a crossover cable.

Ethernet Cables (10 Mb/s)

You can use Cat 3, Cat 4, or Cat 5 unshielded twisted pair (UTP) cable or an EIA/TIA-568 100 ohm shielded twisted pair (STP) cable for 10 Mb/s Ethernet connections. You must use a straight through cable with one RJ-45 connector on each end. Do not use a crossover cable.

Chapter 2

Hardware Installation

This chapter describes how to install the BayStack 21 PCI 10/100 Adapter w/ WOL in an end-user workstation such as a desktop computer or server.

Package Contents

The BayStack 21 network card package contains the following:

- BayStack 21 PCI 10/100 Adapter w/WOL with one RJ-45 port
- WOL cable
- *BayStack 21 PCI 10/100 Adapter w/WOL Software & Documentation CD*, including technical documentation in PDF format
- Safety card
- Warranty/Registration card



Caution: Touch a grounded metal object to free yourself of static electricity prior to handling the network card.

Installing the BayStack 21 PCI 10/100 Adapter w/WOL

To install the BayStack 21 network card in a workstation:

1. **Shut down the workstation.**
2. **Unplug the workstation power cord from the power source.**
3. **Remove the chassis cover of the workstation.**
4. **Locate an available PCI bus master expansion slot in the workstation.**
5. **Remove the protective bracket from the slot.**
6. **Insert the contact edge of the BayStack 21 network card into the slot.**
7. **Make sure all edge connectors of the network card are firmly seated in the slot.**
8. **Install and secure the bracket screw to secure the network card to the chassis.**
9. **If you plan to install the WOL cable, proceed to [“Connecting the WOL Cable” on page 2-3](#). Otherwise, continue with steps 10 through 12.**
10. **Replace the chassis.**
11. **Install a standard Ethernet cable to the BayStack 21 network card.**
 - a. **Plug one end of the network cable into the RJ-45 connector of the network card.**
 - b. **Plug the other end of the network cable into an RJ-45 port on the network device.**
12. **Reconnect the power cord and turn the workstation on.**



Note: If the Basic Input/Output System (BIOS) section of your workstation boot program is “Plug and Play” compliant, the BIOS will automatically configure a newly installed network card.

If the BIOS program has assigned your network card an interrupt number that is already assigned to another device, both devices will fault. If you detect this problem, you must run the CMOS Setup Utility to manually assign a nonconflicting interrupt number.

Connecting the WOL Cable

To install the WOL cable between the BayStack 21 network card and the chassis:

1. **Make sure that the workstation is disconnected from the power source and the chassis cover has been removed.**
2. **Connect one end of the WOL cable to the network card WOL connector.**

You can use either connector on the WOL cable; they are identical. Refer to [Figure 1-3 on page 1-5](#) for the location of the WOL connector on the network card.

3. **Identify the WOL connector location on the workstation motherboard.**

The location of the connector is system dependent. You may see “WOL” written on the motherboard.

4. **Connect the other end of the WOL cable to the motherboard.**



Caution: If the WOL connector on the motherboard does not fit the connector on the WOL cable, or if the WOL connector does not have three pins, do not force the connection or alter the components. Using an incorrect connector can damage the workstation.

5. **Replace the chassis.**
6. **Install a standard Ethernet cable to the BayStack 21 network card.**
 - a. **Plug one end of the network cable into the RJ-45 connector of the network card.**
 - b. **Plug the other end of the network cable into a port on the network hub.**
7. **Reconnect the power cord and turn the workstation on.**
8. **Press the Delete key to enter the BIOS CMOS Setup.**
9. **Enable the WOL function or the power-on function of the workstation.**

The name of this function is architecture dependent. The function may be located in a category heading such as “Power Management.”

10. **Test the WOL function from the workstation you just connected or from another remote workstation that has a network card installed.**

Chapter 3

Software Installation

This chapter provides instructions for installing the Windows- and Novell NetWare-based BayStack 21 network driver software and configuring the BayStack 21 PCI 10/100 Adapter w/WOL on your network. This chapter describes procedures for Windows 95, Windows 98, Windows NT, and Novell NetWare 4.x. Drivers for other operating systems are available but not discussed in this guide. You can access information for installing other drivers from the *BayStack 21 PCI 10/100 Adapter w/WOL Software & Documentation* CD.

Different versions of Windows may have different installation screens than those shown in these instructions. Your installation screens may appear in a different order than the screens in this chapter, or you may encounter more or fewer screens. You will be prompted for the same information, regardless of the Windows version.

The driver starts automatically for Windows 95 and Windows 98. Nortel Networks recommends using the automatic process to take advantage of this “plug-and-play” capability. The driver must be manually configured for Windows NT.

Preinstallation

Perform the following tasks prior to installing the BayStack 21 network driver:

- You must install the BayStack 21 network card before installing the BayStack 21 network driver.
- You must have the Windows 95 or Windows 98 CD and the BayStack 21 network driver CD ready to use during the installation. You may be prompted to install either CD. You may receive the “Insert Disk” and the “Please insert the disk labeled Windows...” messages. If you get these messages, insert the appropriate CD, enter the appropriate drive letter and CD name, and click OK to continue the installation. For example, if drive D is your CD drive and you insert the Windows 95 CD, enter **d:\win95** when prompted.

Installing the Network Driver in a Windows 95 Environment

This section describes the steps required to install the BayStack 21 network driver in a Windows 95 workstation. Be sure you have performed the tasks in [“Preinstallation” on page 3-2](#) before continuing.

To install the network driver:

- 1. Turn on the power to the workstation, and start Windows 95.**

The New Hardware Found window opens, identifying a generic network card. For instance, the window may list “PCI Ethernet Controller” ([Figure 3-1](#)).

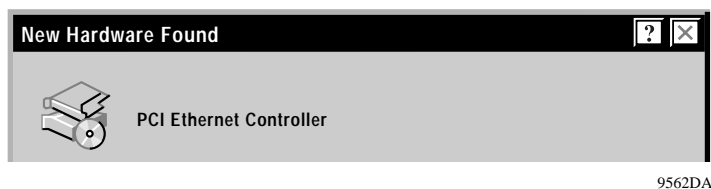


Figure 3-1. New Hardware Found Window—Generic

A second New Hardware Found window opens, identifying your BayStack 21 PCI 10/100 Adapter w/WOL ([Figure 3-2](#)).

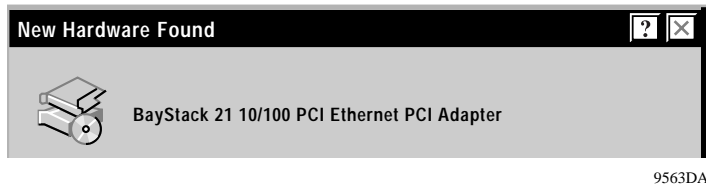


Figure 3-2. New Hardware Found Window—BayStack 21 Network Card

The Building Driver Information Database window opens. You do not have to perform any tasks.

A generic Update Device Driver Wizard dialog box opens ([Figure 3-3](#)).



Figure 3-3. Update Device Driver Wizard Dialog Box—Generic

2. **Insert the *BayStack 21 PCI 10/100 Adapter w/WOL Software & Documentation* CD into the CD drive.**
3. **Click Next.**

The next Update Device Driver Wizard dialog box ([Figure 3-4](#)) indicates that the new BayStack 21 network card has been found and the driver is automatically loaded.

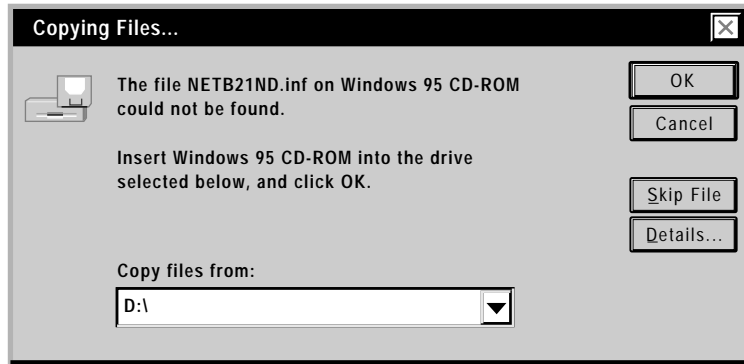


8527DB

Figure 3-4. Update Device Driver Wizard Dialog Box—BayStack 21 Network Card

4. Click Finish.

The Copying Files dialog box opens ([Figure 3-5](#)).



8528DB

Figure 3-5. Copying Files Dialog Box

5. Insert the *BayStack 21 PCI 10/100 Adapter w/WOL Software & Documentation* CD as indicated.**6. Enter the drive letter of the CD drive into the “Copy files from:” field.**

For example, if the CD drive in your workstation is drive D, enter **D:**.

7. Click OK.

The Copying Files dialog box opens again.

8. Insert the Windows 95 CD as indicated.**9. Enter D:\WIN95 into the “Copy files from” field.****10. Click OK.**

The System Settings Change dialog box opens.

11. Remove any CDs from your CD drive.**12. Click Yes.**

Restarting your system is necessary to enable your PC to finish setting up your new hardware.

Configuring the Windows 95 Environment

You must configure the Windows 95 environment on your workstation after you install the BayStack 21 network driver. Configure your workstation identification first, and then configure TCP/IP properties.

Configuring the Workstation Identification

To configure the workstation identification:

1. **From the Windows taskbar, choose Start > Settings > Control Panel.**
2. **Double-click Network.**

The Network dialog box opens. The configuration tab is displayed by default.

3. **Select the Identification tab ([Figure 3-6](#)).**

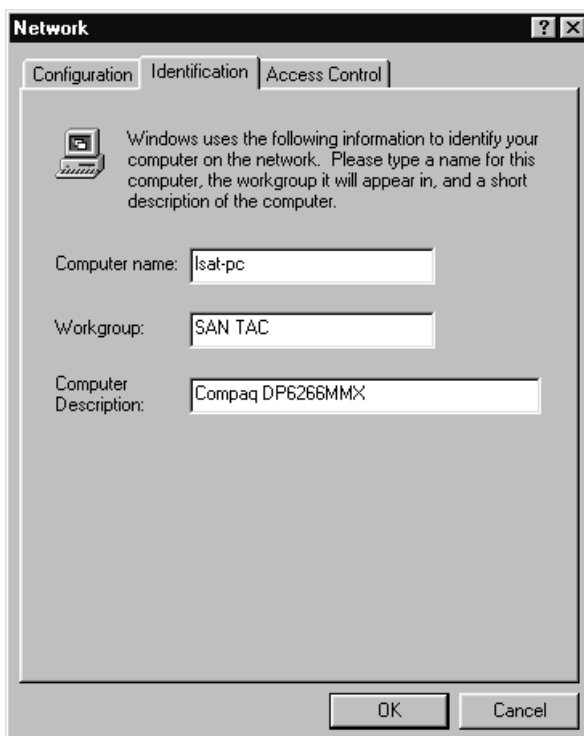


Figure 3-6. Network Dialog Box—Identification Tab

4. Enter the following information for your workstation:

- **Computer Name**—The name assigned to your workstation by your system administrator
- **Workgroup**—Typically, the location or group name assigned by your system administrator
- **Computer Description**—The manufacturing description; usually appears by default

5. Click OK.

Files automatically copy. The Copying Files dialog box opens.

6. Enter the location of the requested files or CD in the “Copy files from:” field.**7. Click OK.**

The System Settings Change dialog box opens ([Figure 3-7](#)).

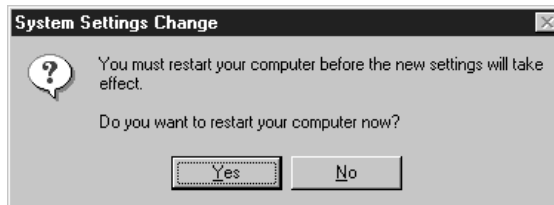


Figure 3-7. System Settings Change Dialog Box

Restarting your system is necessary to enable your PC to finish setting up your new hardware.

8. Remove any CDs from your CD drive.**9. Click Yes.**

Your system will restart.

Configuring the Network Properties

To configure the network properties of your workstation, such as TCP/IP protocols:

1. **From the Windows taskbar, choose Start > Settings > Control Panel.**
2. **Click Network.**

The Network dialog box opens. The configuration tab ([Figure 3-8](#)) is displayed by default.

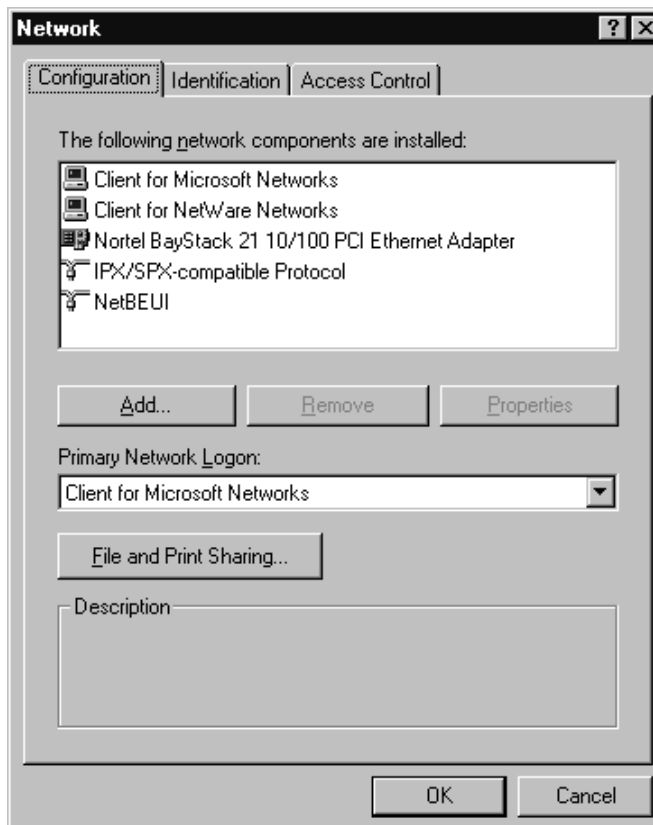


Figure 3-8. Network Dialog Box—Configuration Tab

3. Click Add.

The Select Network Component Type dialog box opens ([Figure 3-9](#)).

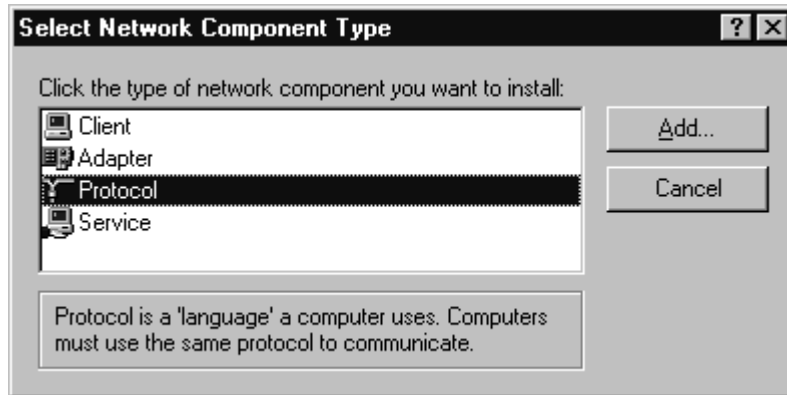


Figure 3-9. Select Network Component Type Dialog Box

4. Select Protocol.

5. Click Add.

The Select Network Protocol dialog box opens ([Figure 3-10](#)).

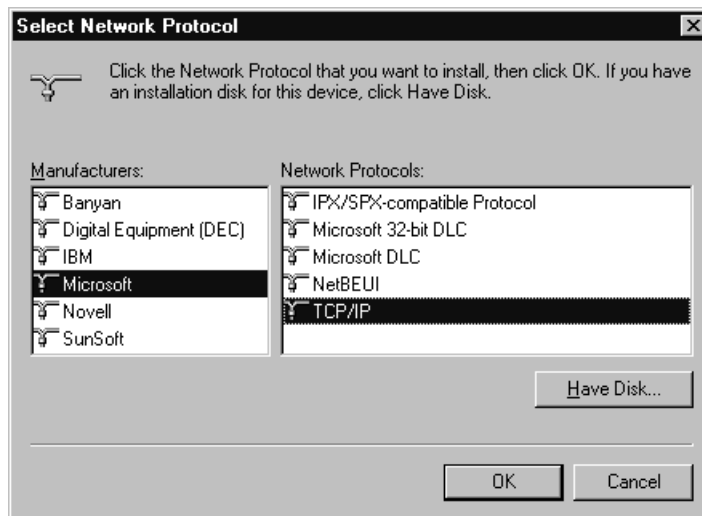


Figure 3-10. Select Network Protocol Dialog Box

6. In the **Manufacturers list**, select **Microsoft**.
7. In the **Network Protocols list**, select **TCP/IP**.
8. Click **OK**.
9. Return to the **Configuration** tab.
10. Select **Nortel BayStack 21 10/100 PCI Ethernet Adapter** ([Figure 3-11](#)).

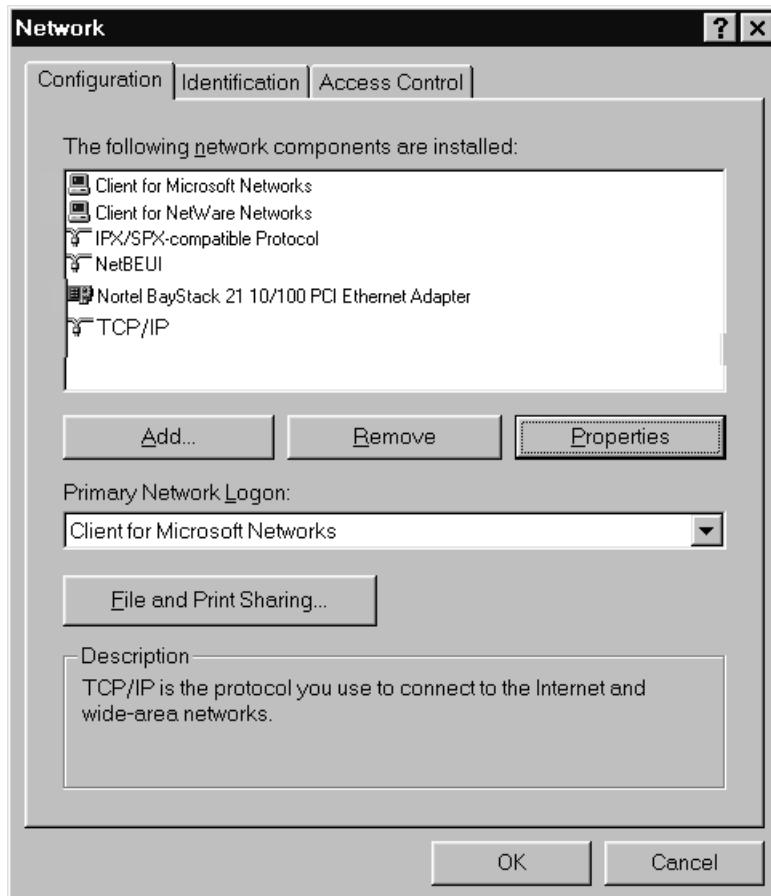


Figure 3-11. Configuration Tab, BayStack 21 Network Card Selected

11. Click Properties.

The TCP/IP Properties dialog box opens ([Figure 3-12](#)).

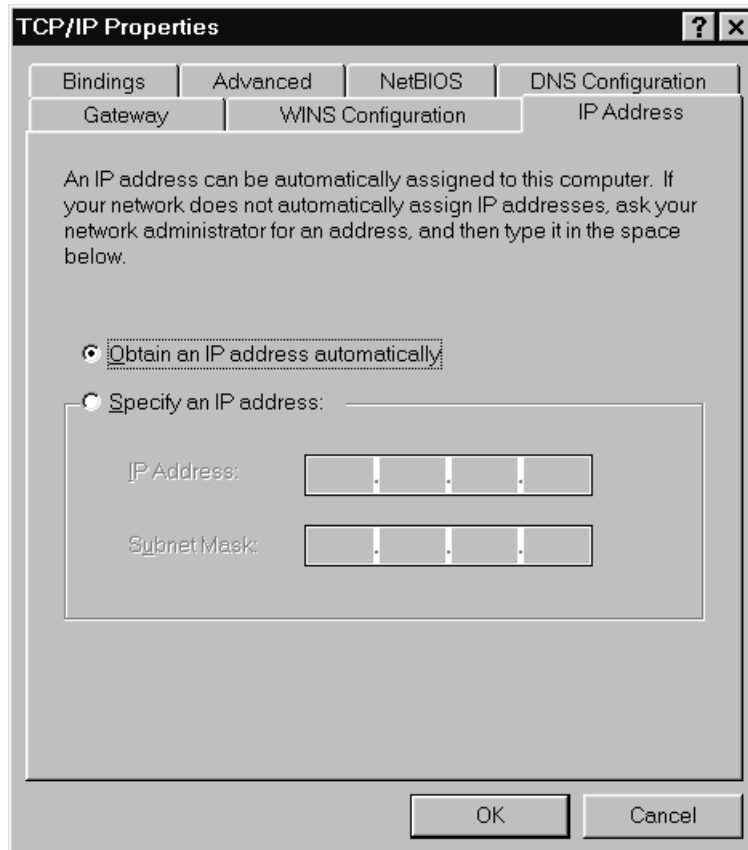


Figure 3-12. TCP/IP Properties Dialog Box

12. Select the IP Address tab.**13. If the workstation has a static IP address, specify the IP address, subnet mask, and default gateway of your workstation.**

You can also choose the “Obtain an IP address automatically” option if the workstation does not have a static IP address. If you choose this option, your IP address will be supplied by a DHCP server.

14. Use the Gateway or DNS Configuration tabs to configure other parameters, as needed.

15. Click OK.

The Copying Files dialog box opens.

16. In the “Copy files from:” field, enter the location of the requested files or CD.

17. Click OK.

The system restart dialog box opens. Restarting your system is necessary to enable your PC to finish setting up your new hardware.

18. Remove all CDs from the CD drive.

19. Click Yes.

Your system restarts.

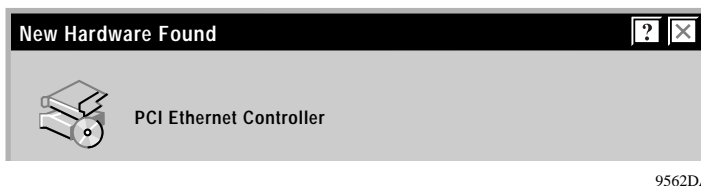
Installing the Network Driver in a Windows 98 Environment

This section describes the steps required to install the BayStack 21 network driver in a Windows 98 workstation.

To install the network driver:

1. Turn on the power to the workstation, and start Windows 98.

The New Hardware Found window opens, identifying a generic network card. For instance, the window may list “PCI Ethernet Controller” ([Figure 3-13](#)).



9562DA

Figure 3-13. New Hardware Found Window—Generic

A second New Hardware Found window opens, identifying your BayStack 21 PCI 10/100 Adapter w/WOL ([Figure 3-14](#)).

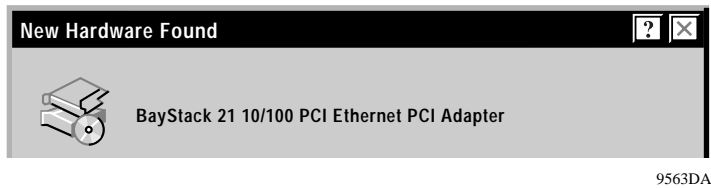


Figure 3-14. New Hardware Found Window

The Copying Files dialog box opens ([Figure 3-15](#)).

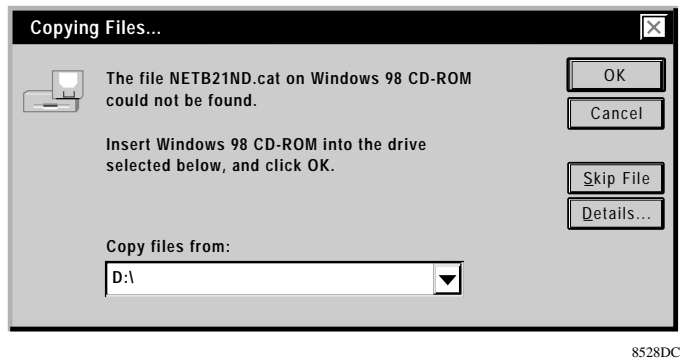


Figure 3-15. Copying Files Dialog Box

2. **Insert the required CD into the CD drive of your workstation.**
3. **Enter the location and file name of the CD in the “Copy files from:” field.**
For instance, enter **D:\nt_9x** if you inserted the Windows 98 CD into drive D.

4. Click OK.

The Copying Files dialog box opens ([Figure 3-16](#)).

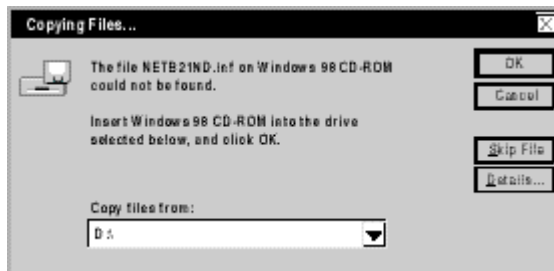


Figure 3-16. Copying Files Dialog Box

5. Insert the required CD into the CD drive of your workstation.

6. Enter the location and file name of the CD in the “Copy files from:” field.

7. Click OK.

The install program searches the CD. The New Hardware Found dialog box opens ([Figure 3-17](#)).

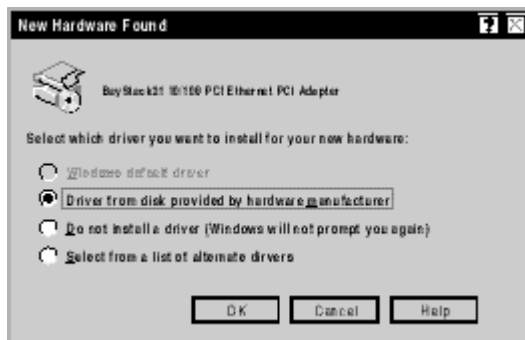


Figure 3-17. New Hardware Found Dialog Box

8. Select one of the following options:

- Driver from disk provided by hardware manufacturer (recommended by Nortel Networks)
- Do not install a driver (Windows will not prompt you again)
- Select from a list of alternate drivers

9. Click OK.

The System Settings Change dialog box opens ([Figure 3-18](#)).

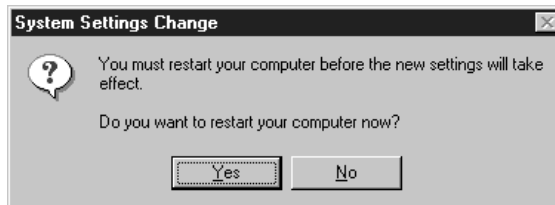


Figure 3-18. System Settings Change Dialog Box

Restarting your system is necessary to enable your PC to finish setting up your new hardware.

10. Remove all CDs from the CD drive.**11. Click Yes.**

Your system restarts.

Configuring the Windows 98 Environment

You must configure the Windows 98 environment on your workstation after you install the BayStack 21 network driver.

Configuring the Network Properties

To configure the network properties for your workstation:

1. **From the Windows taskbar, choose Start > Settings > Control Panel.**
2. **Double-click Network.**

The Network dialog box opens. The TCP/IP network protocol for the BayStack 21 network driver is already installed.

The configuration tab ([Figure 3-19](#)) is displayed by default.

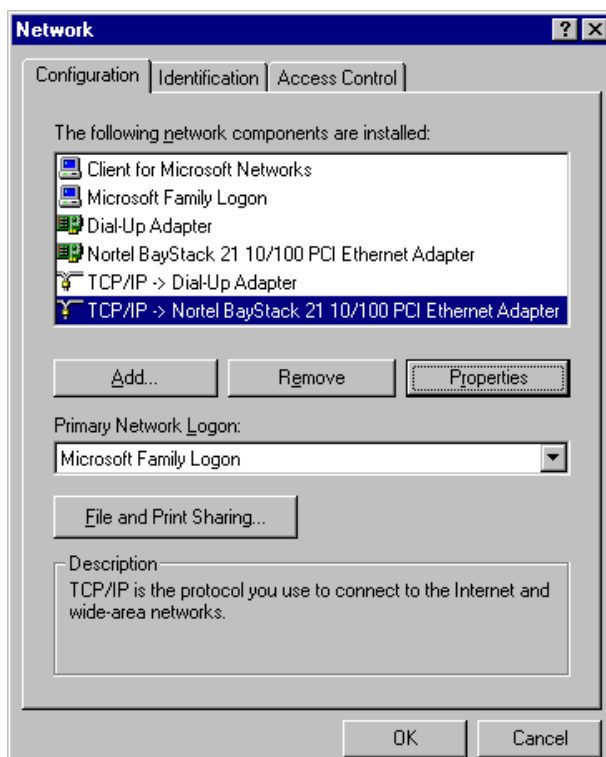


Figure 3-19. Network Dialog Box—Configuration Tab

3. **Select Nortel BayStack 21 10/100 PCI Ethernet Adapter.**

4. Click Properties.

The TCP/IP Properties dialog box opens ([Figure 3-20](#)).

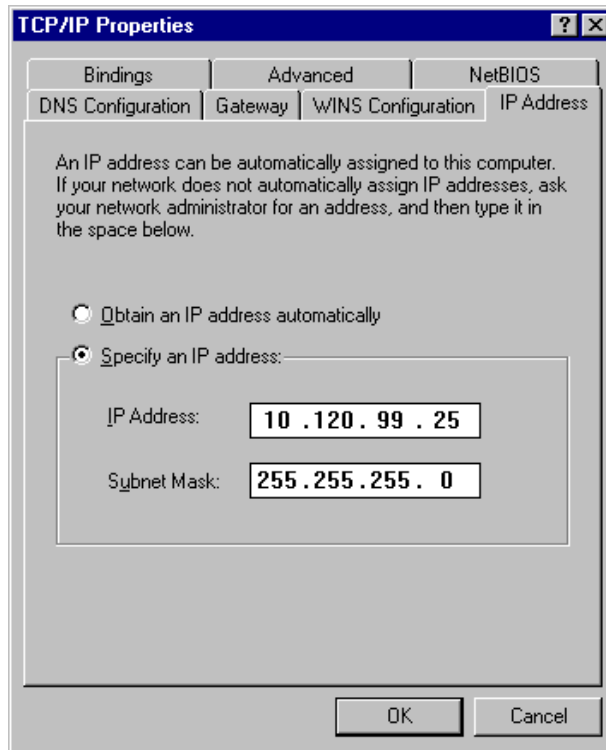


Figure 3-20. TCP/IP Properties Dialog Box

5. Select the IP Address tab.

6. If the workstation has a static IP address, specify the IP address, subnet mask, and default gateway of your workstation.

You can also choose the “Obtain an IP address automatically” option if the workstation does not have a static IP address. If you choose this option, your IP address will be supplied by a DHCP server.

7. Use the Gateway or DNS Configuration tabs to configure other parameters, as needed.

8. Click OK.

The System Settings Change dialog box opens.

9. Click Yes.

Your system restarts.

Installing the Network Driver in a Windows NT Environment

The Windows NT installation of the BayStack 21 network driver is not automatic. You must install the driver manually.

To install the network driver:

- 1. From the Windows taskbar, choose Start > Settings > Control Panel.**
- 2. Double-click Network.**

The Network dialog box opens. The Identification tab is displayed by default.

- 3. Select the Adapters tab ([Figure 3-21](#)).**

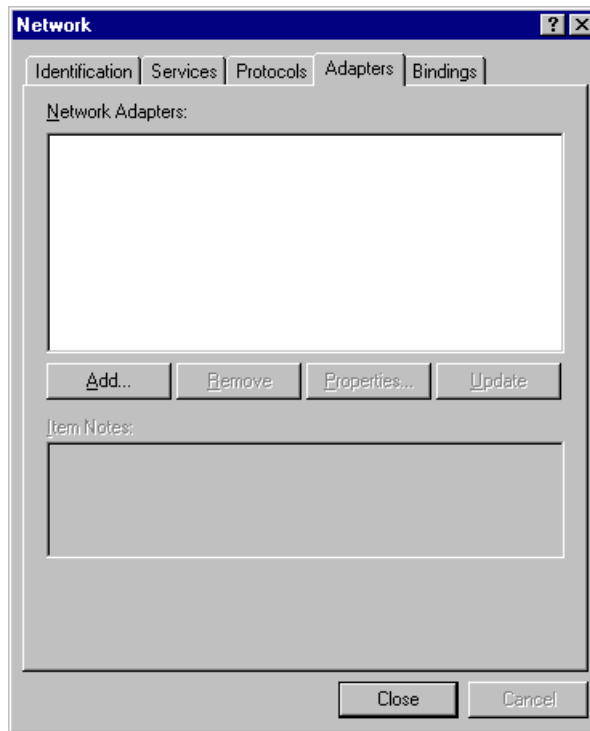


Figure 3-21. Network Dialog Box—Adapters Tab

4. Select Add.

The Select Network Adapter dialog box opens ([Figure 3-22](#)).

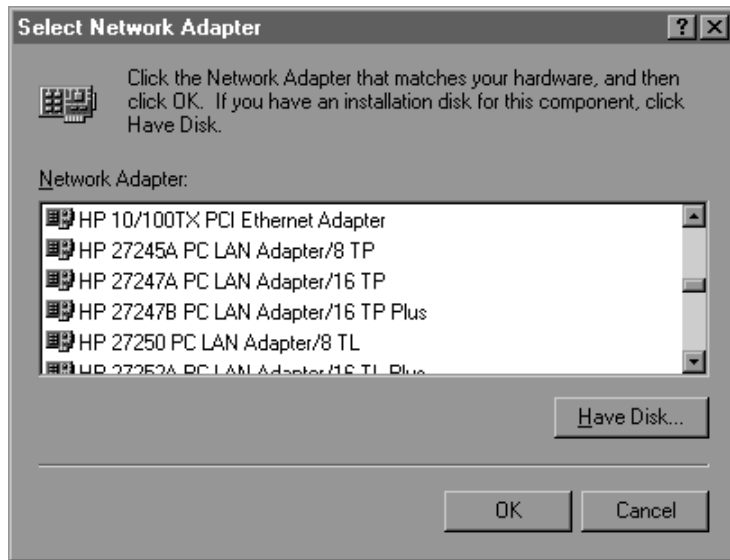


Figure 3-22. Select Network Adapter Dialog Box

5. Click Have Disk.

6. Insert the *BayStack 21 PCI 10/100 Adapter w/WOL Software & Documentation* CD into the CD drive.

7. Specify the letter of the drive into which you installed the CD.

Typically the CD drive is letter D.

8. Click OK.

The Select OEM Option dialog box opens ([Figure 3-23](#)).

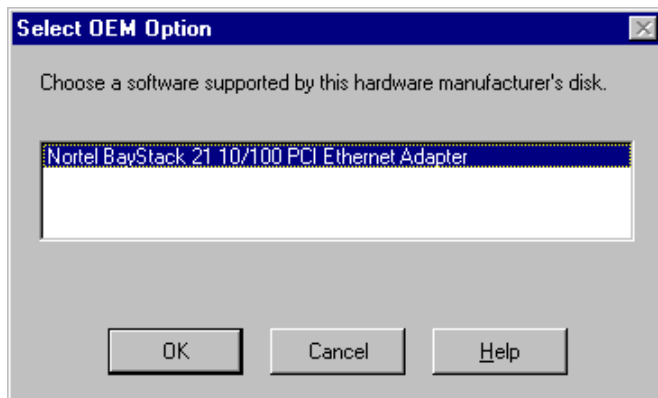


Figure 3-23. Select OEM Option Dialog Box

9. Select Nortel BayStack 21 10/100 PCI Ethernet Adapter.

10. Click OK.

The Speed/Duplex Mode dialog box ([Figure 3-24](#)) opens. The default mode is Auto.

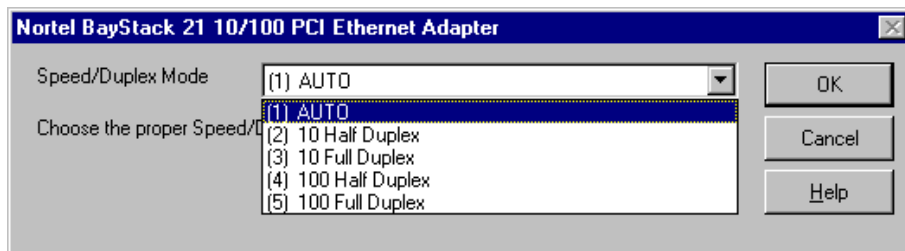


Figure 3-24. Speed/Duplex Mode Dialog Box

11. Select Auto.

12. Click OK.

Configuring the Network Properties

To configure the network properties for your workstation:

1. **From the Windows taskbar, choose Start > Settings > Control Panel.**
2. **Double-click Network.**

The Network dialog box opens. The Identification tab is displayed by default.

3. **Click the Protocols tab.**

The Protocols tab ([Figure 3-25](#)) is displayed.

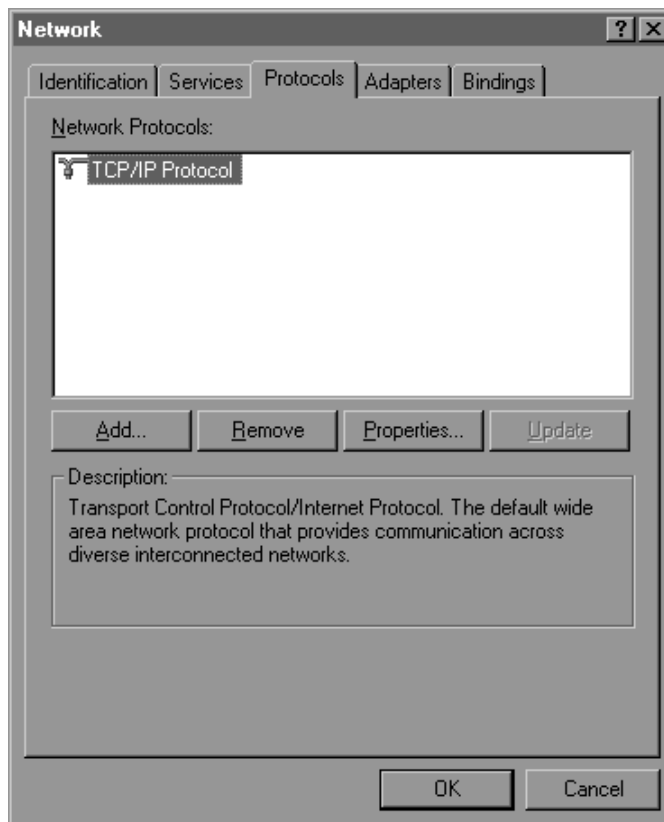


Figure 3-25. Network Dialog Box—Protocols Tab

4. Click Properties.

The Microsoft TCP/IP Properties dialog box opens ([Figure 3-26](#)).

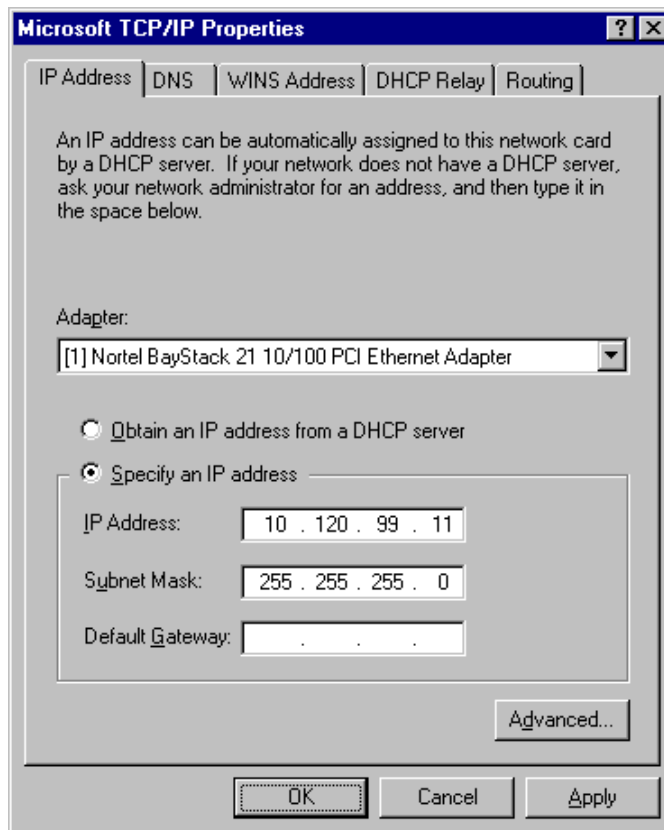


Figure 3-26. Microsoft TCP/IP Properties Dialog Box

5. If the workstation has a static IP address, specify the IP address, subnet mask, and default gateway of your workstation.

You can also choose the “Obtain an IP address from a DHCP server” option if the workstation does not have a static IP address.

6. Use the DNS tab to add additional network parameters, if needed.**7. Click OK.**

8. Click Close.

The System Settings Change dialog box opens. Restarting your system is necessary to enable your PC to finish setting up your new hardware.

9. Click Yes.

Your system restarts.

Installing the Network Driver in a Novell NetWare 4.x Environment

This section describes the steps required to install the BayStack 21 network driver software in a Novell NetWare version 4.x environment. You must install and configure the software on your Novell server and client.

If you are installing the BayStack 21 network driver software in a Novell NetWare version 3.12 environment, refer to the *Readme.txt* file on the *BayStack 21 PCI 10/100 Adapter w/WOL Software & Documentation* CD.

Installing the Network Driver in a Novell NetWare Server

To install the BayStack 21 network driver in a Novell NetWare server:

1. Verify that your Novell NetWare server includes the following files:

- `\NETWARE\SERVER\4.X\MSM.NLM` (Media Support Module)
- `\NETWARE\SERVER\ETHERTSM.NLM` (Topology Specific Module for Ethernet)

2. Change to the Novell NetWare server directory.

For instance, type the command:

CD\NWSERVER

3. Type:

SERVER

4. Press Enter.

5. At the server prompt, enter:

LOAD INSTALL

6. From the Installation Options menu, select Driver options.

7. **Press Enter.**
8. **From the Driver Options menu, select Configure network drivers.**
9. **Press Enter.**
10. **From the Additional Driver Actions menu, select Select a driver.**
11. **Press Enter.**
12. **Press Insert to install an unlisted driver.**

By default, your a: drive is scanned.
13. **Press <F3> to specify another path or drive.**
14. **Insert the *BayStack 21 PCI 10/100 Adapter w/WOL Software & Documentation* CD into the CD drive of your server.**
15. **Press Enter.**

The following file automatically copies from the *BayStack 21 PCI 10/100 Adapter w/WOL Software & Documentation* CD to your Novell NetWare server:

- `\NETWARE\SERVER\B21LAN10.LAN`

16. **From the Select a driver to install: menu, select Nortel 21 10/100 PCI Ethernet Driver.**
17. **Press Enter.**

The “Do you want to copy driver B21LAN10.LAN (Y)(N)” message is displayed.
18. **Select Yes.**
19. **Proceed to the next section if you want to specify driver parameters.**

Specifying Driver Parameters

The BayStack 21 network driver installs with default parameters. You can set specific driver parameters for the server.

To set specific driver parameters:

1. **From the Board B21LAN10_ 1 (Driver B21LAN10) Actions menu, select “Select/Modify driver parameters and protocols.”**

2. **Press Enter.**

The default protocol is IPX. You can also select TCP/IP or AppleTalk.

3. **Select a protocol from the available options.**

4. **Specify the slot number (slot #).**

5. **Select “Save parameter and load select driver.”**

If you select the IPX protocol, the network number (network #) is randomly generated.

6. **Press Enter at each of the following four prompts:**

- 802.3
- 802.2
- SNAP
- Ethernet II

Installing the Network Card in a Novell NetWare Client

To install the BayStack 21 network driver in your Novell NetWare client:

1. **Verify that your BayStack 21 network card is properly installed in your Novell NetWare workstation.**
2. **Insert the *BayStack 21 Network Driver CD* into the CD drive in your workstation.**
3. **Access the Novell NetWare client directory.**
4. **Copy the following command to the client directory:**
\\NETWARE\\DOSODIB21ODI10.COM
5. **Enter the following commands, in order:**

```
ls  
b21odi10  
ipxodi  
netx (or vlm)
```

6. **Press Enter.**

You can now log in to your network.

7. **Edit the *NET.CFG* file to change driver parameters.**
8. **Verify that there is a protocol binding for Ethernet 802.3 in the *NET.CFG* file.**

Refer to [Appendix B, “Novell NetWare Reference Information”](#) for sample *NET.CFG* files.

Chapter 4

Using the WOL Feature

You can use the Wake On LAN (WOL) feature to start up remote workstations without end-user intervention. A BayStack 21 PCI 10/100 Adapter w/WOL must be installed on each workstation that you want to start remotely. You must set up each workstation prior to using the WOL feature.

Setting Up the Workstation

Perform the following tasks prior to using the WOL feature on a remote workstation:

- Make sure the WOL connector is attached to the BayStack 21 network card and to the motherboard of the workstation.

Refer to [“Connecting the WOL Cable”](#) on [page 2-3](#) for instructions.

- Place the workstation in sleep (or standby) mode, or turn the workstation off completely.

Running the WOL Feature

You must have a WOL-capable utility on the workstation from which you are using the WOL feature to turn on remote workstations. There are several commercially available utilities. As an example, instructions for using the AMD Magic Packet Utility are provided in this section. You can obtain this utility from www.amd.com. Procedures for utilities from other companies vary.

To use the WOL feature:

1. Open a WOL utility, such as the Magic Packet Utility ([Figure 4-1](#)).



Figure 4-1. Magic Packet Utility Window

2. From the Magic Packet Utility menu, select Magic Packets > Create a List of Hosts.

The Create a List of Hosts on LAN dialog box opens ([Figure 4-2](#)).

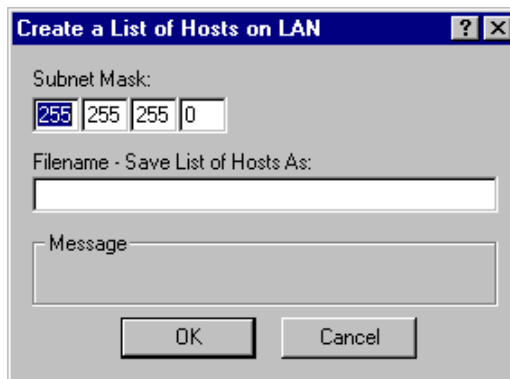


Figure 4-2. Create a List of Hosts on LAN Dialog Box

3. Enter the subnet mask of the remote workstation you want to turn on.

The utility maps, or locates, BayStack 21 network cards in the subnet you specified. Make sure the remote workstation is still turned on. It should not be in standby or shutdown mode.

4. Click OK.

The Magic Packet Utility identification window opens ([Figure 4-3](#)).

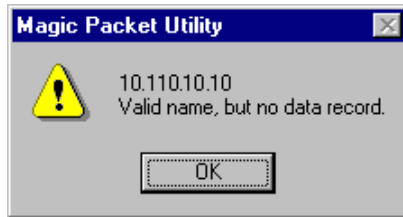


Figure 4-3. Magic Packet Utility Identification Window

5. Click OK.

The NewGroup window opens ([Figure 4-4](#)), displaying information about the remote workstation you want to turn on.

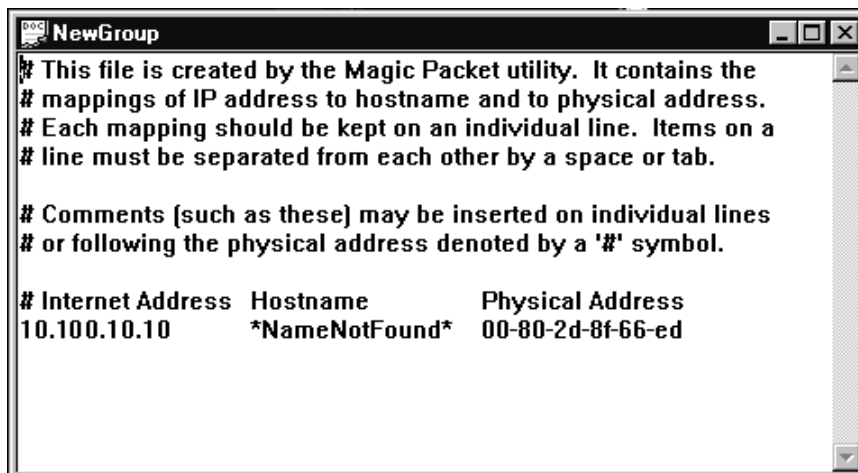


Figure 4-4. NewGroup Window

You can now turn on the remote workstation. Continue with these instructions when the workstation is in standby or shutdown mode.

6. **Return to the Magic Packet Utility menu.**
7. **Select Magic Packet > Power on One Host.**

The Send a Magic Packet to One Host dialog box opens ([Figure 4-5](#)).

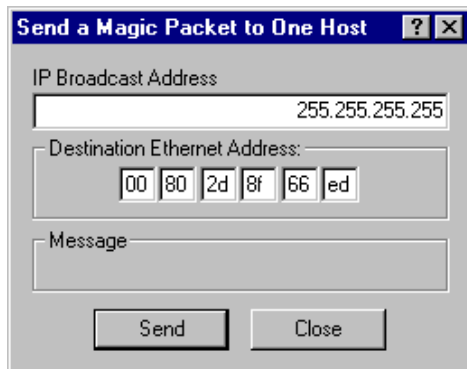


Figure 4-5. Send a Magic Packet to One Host Dialog Box

8. **Enter the physical address of the remote workstation you want to turn on. Do not enter the IP address.**
9. **Click Send.**

The utility sends a packet to the BayStack 21 network card on the remote workstation to turn on the workstation.
10. **Click Close.**

Chapter 5

Troubleshooting

This chapter provides several methods for troubleshooting problems related to the BayStack 21 PCI 10/100 Adapter w/WOL.

Diagnostic LEDs

Three LEDs on the front of the BayStack 21 network card provide diagnostic information. The 10 Mb/s and 100 Mb/s Link LEDs indicate successful network connections to Ethernet and Fast Ethernet devices, respectively. The Link LEDs remain steady if the connection is stable. You should check the RJ-45 connection if the LED is not steady. The Activity LED indicates active network traffic.

[Table 5-1](#) describes the Link and Activity LED indications.

Table 5-1. LED Indications

Label	Color	Activity	Description
10 LNK	Green	On	A 10 Mb/s connection has been established.
		Off	Power is not supplied to the network card, or a 10 Mb/s connection is not established.
100 LNK	Green	On	A 100 Mb/s connection has been established.
		Off	Power is not supplied to the network card, or a 100 Mb/s connection is not established.
ACT	Green	On	Heavy network traffic is passing through the port.
		Blinking	Intermittent or light network traffic is passing through the port. The rate of blinking is proportional to the amount of network traffic.

Hardware Issues

Perform the following tasks to check for hardware problems:

- Verify that you are using the correct cables and the correct cable lengths, as described in [“Cable Requirements” on page 1-7](#).
- Make sure the network cable is firmly connected to the network card and to a network device.
- Connect the Ethernet cable to a different port on the network device.
- Verify that the BayStack 21 network card is fully and firmly seated in the slot connector in the workstation chassis. Check the connector edges of the card for damage.
- Replace the network card in question with a network card that you are sure functions properly. Run generic network interface card diagnostic tests.
- Install the network card in question into another workstation and run the tests again.
- Remove all other network cards from the workstation and run the tests again. If the verification/diagnostic run is not normal, there is probably an interrupt number conflict. You must manually resolve the conflict by running a CMOS Setup utility after you have reinstalled the expansion cards.

Software Issues

Perform the following tasks to check for software problems:

- Verify that the proper driver is loaded, as explained in [Chapter 3, “Software Installation.”](#) Be sure you followed the directions for the operating system you are running on the workstation.
- Check that the new configurations match the configurations of the network device if you have manually configured the speed or mode of the network card. Nortel Networks recommends setting the network card to autonegotiation when installing the network driver.

- Verify that the PCI slot in the workstation is an enabled bus-master slot. Do not use a slave PCI slot for the BayStack 21 network card. Some computers may require that you configure the PCI slot to enable bus mastering. Refer to your computer manual for information about the PCI BIOS setup program.

Be sure that the slot is configured for level-triggered interrupts. It should not be configured for edge-triggered interrupts. [Table 5-2](#) describes typical PCI parameter configurations. Parameters may vary in different systems.

Table 5-2. Typical PCI Slot Parameters

Parameter	Configuration
PCI Slot #	Slot number where the network card is installed
Master	Enabled
Slave	Enabled
Latency Timer	40 (range: 20 to 255)
Interrupt Type	Level-triggered
Interrupt Number	Choice of any number that the BIOS setup program supplies. (The interrupt number should not conflict with other installed cards.)

- Verify that your BIOS software correctly supports the PCI Local Bus Specification, version 2.0 or later. Upgrade your BIOS software if needed.
- Determine whether or not the network card slot is deactivated at the BIOS level. Use the CMOS Setup utility in your workstation to provide the option to activate or deactivate slots.
- Disable the Plug and Play option (PnP) in the BIOS setup program, if your computer does not require this option. Incorrectly assigned resources between network cards may cause a problem.



Note: Always consult your computer manual for information about changing motherboard jumper and BIOS settings. If you modify the BIOS settings, make sure the jumper and BIOS settings match.

- You may need to reserve interrupts and memory addresses for installed Industry Standard Architecture (ISA) cards to prevent PCI cards from using the same settings. Refer to your PC manual for instructions.

Appendix A

Technical Specifications

Tables in this appendix provide technical product specifications and list the available software drivers for the BayStack 21 PCI 10/100 Adapter w/WOL.

Product Specifications

[Table A-1](#) lists technical specifications for the BayStack 21 network card.

Table A-1. Technical Specifications

Standards Compatibility	IEEE 802.3 10BASE-T IEEE 802.3u 100BASE-TX PCI bus V2.2 ACPI OnNow/PC98
EMC Compliance	
CE Mark:	EN50081-1 EN55022 IEC1000-4-2/3/4/6
Emissions:	FCC Class B VCCI Class B Industry Canada Class B EN55022 (CISPR 22) Class B
Physical Dimensions	
Network Card:	120 x 53.5 mm (4.72 x 2.11 in)
WOL Cable:	298 mm (11.75 in) (not including connectors)
Weight	55g (1.94 oz)

Table A-1. Technical Specifications (continued)

Environment	
Operating:	0° to 50° C (32° to 122° F)
Humidity:	5% to 95%, noncondensing
Power Consumption	+5 V DC at 145mA (Standby)
	+5 V DC at 300mA (Transmit)
Network Interface	
10BASE-T:	RJ-45 (UTP Cable, Categories 3, 4, 5)
100BASE-TX:	RJ-45 (UTP Cable, Category 5)
Data Interface	32-bit bus-mastering PCI
I/O Address	Automatically determined by configuration space
Interrupt	INT A, mapping to BIOS IRQ setup
LED Indicators	10 Mb/s, 100 Mb/s, Activity

Software Drivers

[Table A-2](#) lists the available software drivers for the BayStack 21 PCI 10/100 Adapter w/WOL. Refer to [Chapter 3, “Software Installation,”](#) for installation instructions regarding the Windows-based drivers. Refer to the README files associated with other drivers for installation instructions.

Table A-2. Available Software Drivers

Driver	Compatible Operating Systems
Microsoft	Windows 95/Windows 98 Windows NT 3.51, 4.0 Windows for Workgroups 3.11 LAN Manager 2.x
Novell NetWare	NetWare 3.1x, 4.x 32-bit ODI driver 16-bit DOS ODI driver Client32 for Windows 95
SCO	UNIX 3.2.4 ODT 5.0
Other	NDIS2 DOS Mode Driver Packet Driver

Appendix B

Novell NetWare Reference Information

This appendix provides reference files and information for your Novell NetWare 4.x operating system. Server and client information is provided in the following sections.

If you are installing the BayStack 21 PCI Network Driver software in a Novell NetWare version 3.12 environment, refer to the *Readme.txt* file on the *BayStack 21 PCI 10/100 Adapter w/WOL Software & Documentation* CD.

Novell NetWare Server ***AUTOEXEC.NCF*** Files and Parameters

This section provides information about the Novell NetWare 4.x ***AUTOEXEC.NCF*** files and parameters.

Sample *AUTOEXEC.NCF* Files

Sample files are provided for workstations that have one or two network cards installed.

One Network Card Installed

The following files are typically part of the *AUTOEXEC.NCF* file, with one network card installed in the workstation:

```
LOAD C:B21LAN10 FRAME=ETHERNET_802.2 NAME=E_8022
LOAD C:B21LAN10 FRAME=ETHERNET_802.3 NAME=E_8023
LOAD C:B21LAN10 FRAME=ETHERNET_II NAME=E_II
LOAD C:B21LAN10 FRAME=ETHERNET_SNAP NAME=E_SNAP
```

```
BIND IPX E_8022 NET=10
BIND IPX E_8023 NET=20
BIND IPX E_II NET=30
BIND IPX E_SNAP NET=40
```

Two Network Cards Installed

The following files are typically part of the *AUTOEXEC.NCF* file, with two network cards installed in the workstation:

```
LOAD C:B21LAN10 PCI_SLOT=3 FRAME=ETHERNET_802.2 NAME=E_8022_1
LOAD C:B21LAN10 PCI_SLOT=3 FRAME=ETHERNET_802.3 NAME=E_8023_1
LOAD C:B21LAN10 PCI_SLOT=3 FRAME=ETHERNET_II NAME=E_II_1
LOAD C:B21LAN10 PCI_SLOT=3 FRAME=ETHERNET_SNAP NAME=E_SNAP_1
LOAD C:B21LAN10 PCI_SLOT=4 FRAME=ETHERNET_802.2 NAME=E_8022_2
LOAD C:B21LAN10 PCI_SLOT=4 FRAME=ETHERNET_802.3 NAME=E_8023_2
LOAD C:B21LAN10 PCI_SLOT=4 FRAME=ETHERNET_II NAME=E_II_2
LOAD C:B21LAN10 PCI_SLOT=4 FRAME=ETHERNET_SNAP NAME=E_SNAP_2
```

```
BIND IPX E_8022_1 NET=10
BIND IPX E_8023_1 NET=20
BIND IPX E_II_1 NET=30
BIND IPX E_SNAP_1 NET=40
BIND IPX E_8022_2 NET=10
BIND IPX E_8023_2 NET=20
BIND IPX E_II_2 NET=30
BIND IPX E_SNAP_2 NET=40
```

Sample *AUTOEXEC.NCF* File Parameters

This section describes the *AUTOEXEC.NCF* file parameters SLOT, FRAME, NODE, and Medium.

SLOT Parameter

The SLOT parameter specifies which adapter is enabled when multiple BayStack 21 PCI Network Cards are installed in your workstation. The SLOT keyword is an index value corresponding to PCI BIOS. The mapping from the SLOT parameter to the physical PCI slot is different from one workstation to another.

The following are examples of typical SLOT parameters:

```
LOAD C:B21LAN10 SLOT=3 FRAME=ETHERNET_802.2  
LOAD C:B21LAN10 SLOT=4 FRAME=ETHERNET_II
```

FRAME Parameter

The FRAME parameter specifies which type of frame is used by the BayStack 21 network driver.

Accepted values include:

- Ethernet_802.3
- Ethernet_802.2
- Ethernet_II
- Ethernet_SNAP

Multiple frame types can be enabled by loading the same driver with different FRAME type parameters.

The following are examples of typical SLOT parameters:

```
LOAD C:B21LAN10 FRAME=ETHERNET_802.2  
LOAD C:B21LAN10 FRAME=ETHERNET_802.3  
LOAD C:B21LAN10 FRAME=ETHERNET_II  
LOAD C:B21LAN10 FRAME=ETHERNET_SNAP
```

NODE Parameter

You can use the NODE parameter to replace the default node address associated with your electrically erasable programmable read-only memory (EEPROM).

The following is an example of a typical NODE parameter:

LOAD B21LAN10 NODE=0000E8001122

Medium Parameter

The Medium parameter specifies which medium type is used by the BayStack 21 network driver. The medium type refers to the transmission type.

Accepted values include:

- AUTO (sense)
- 100FULL (duplex mode)
- 100HALF (duplex mode)
- 10FULL (duplex mode)
- 10HALF (duplex mode)

The following is an example of a typical Medium parameter:

LOAD B21LAN10 SLOT=3 FRAME=ETHERNET_802.2 Medium=100Full

Novell NetWare Client Commands and *NET.CFG* File

This section provides information about commands and the *NET.CFG* file.

Client Commands

[Table B-1](#) briefly describes the commands you enter when installing the BayStack 21 network driver into your Novell NetWare client.

Table B-1. Commands

Command	Description
lsl	Supports the OSI link support layer
b21odi10	Client driver copied from the <i>BayStack 21 PCI 10/100 Adapter w/WOL Software & Documentation CD</i>
ipxodi	Default protocol stack
netx (or vlm)	Server connection

Sample *NET.CFG* Files

The MLDI section of the *NET.CFG* file is the section usually edited. The following *NET.CFG* file is a sample:

```
Link Driver B21ODI10
  FRAME Ethernet_802.2
  FRAME Ethernet_802.3
  FRAME Ethernet_II
  FRAME Ethernet_SNAP
  PROTOCOL IPX 0 Ethernet_802.3
  .
  .
  MEDIUM AUTO ;operate on auto negotiation mode
; MEDIUM 10HALF ;operate on 10M/HalfDuplex mode
; MEDIUM 10FULL ;operate on 10M/Fulllduplex mode
; MEDIUM 100HALF ;operate on 100M/HalfDuplex mode
; MEDIUM 100FULL ;operate on 100M/Fulllduplex mode
```


Numbers

10 Mb/s Ethernet cables, 1-6
100 Mb/s Ethernet cables, 1-6
10BASE-T/100BASE-TX ports, 1-2

A

autonegotiation, 1-2

C

cables

- 10 Mb/s Ethernet, 1-6
- 100 Mb/s Ethernet, 1-6
- requirements, 1-6
- WOL, 1-4

connectors

- 10BASE-T/100BASE-TX, 1-2
- RJ-45 port, 1-2
- WOL, 1-4

conventions, text, xvii, xviii

customer support, xviii

E

Ethernet cables, 1-6

F

Fast Ethernet cables, 1-6

I

installation

- network card, 2-2
- network driver
 - in a Windows 95 system, 3-2
 - in a Windows 98 system, 3-12
 - in a Windows NT system, 3-18
- preinstallation tasks, 3-2
- WOL cable, 2-3

L

LEDs, 1-3, 5-1

N

network card

- configuring
 - in a Windows 95 environment, 3-6
 - in a Windows 98 environment, 3-16
 - in a Windows NT environment, 3-21
- installing, 2-2

network drivers

- installing in a Novell NetWare 4.x environment, 3-23
- installing in a Windows 95 environment, 3-2
- installing in a Windows 98 environment, 3-12
- installing in a Windows NT environment, 3-18
- installing in other systems, A-2

network properties

- configuring for Windows 95, 3-8
- configuring for Windows 98, 3-16
- configuring for Windows NT, 3-21

Novell NetWare

- client commands, B-5
- client file examples, B-5
- server file examples, B-1
- specifying driver parameters, 3-24

O

operating environments, 1-5

P

package contents, 2-1

ports

- autonegotiation, 1-2
- Ethernet 10BASE-T/100BASE-TX, 1-2

product

- components, 1-2
- specifications, A-1
- support, xviii

R

- requirements, system, 1-5

S

- support, Nortel Networks, xviii
- system requirements, 1-5

T

- technical publications, xviii
- technical specifications, A-1
- technical support, xviii
- text conventions, xvii
- troubleshooting
 - diagnostic LEDs, 5-1
 - hardware, 5-2
 - software, 5-2

W

- Wake on LAN. *See* WOL, 1-1

Windows 95

- network properties, 3-8
- workstation identification, 3-6

Windows 98, network properties, 3-16

Windows NT, network properties, 3-21

WOL

- running, 4-2
- setting up the workstation, 4-1
- using, 4-1

WOL cable

- description, 1-4
- installation, 2-3

WOL connector, description, 1-4

workstation identification

- configuring for Windows 95, 3-6