



# MvPCinfo Help

MvPCinfo Copyright 2000-16 MVsoft Co. All Rights Reserved.

# Table of Contents

|   |           |
|---|-----------|
| <b>Part I Welcome!</b>                                  | <b>4</b>  |
| <b>Part II What's new</b>                               | <b>4</b>  |
| <b>Part III Introduction</b>                            | <b>11</b> |
| 1 What's in MvPCinfo.....                               | 11        |
| 2 How it works.....                                     | 12        |
| 3 Evaluation and full versions differences.....         | 12        |
| 4 What's in package.....                                | 12        |
| <b>Part IV Operating</b>                                | <b>13</b> |
| 1 Software searching.....                               | 13        |
| 2 Associated Licenses.....                              | 13        |
| 3 Detecting changes.....                                | 14        |
| 4 LAN Scanner.....                                      | 14        |
| 5 Port Scanner.....                                     | 15        |
| 6 Folder sizes.....                                     | 15        |
| 7 Remote Machine Testing.....                           | 15        |
| <b>Part V Configuring</b>                               | <b>16</b> |
| 1 Command line parameters.....                          | 16        |
| 2 Configuration File.....                               | 22        |
| 3 Configuration File Builder.....                       | 23        |
| 4 Custom Fields.....                                    | 24        |
| 5 Custom Fields Wizard Dialog.....                      | 25        |
| 6 Customize program view.....                           | 26        |
| 7 Attaching files to executable .....                   | 28        |
| 8 Running other programs from within MvPCinfo.....      | 28        |
| <b>Part VI Reporting</b>                                | <b>29</b> |
| 1 Report templates.....                                 | 29        |
| 2 Sending reports via E-Mail.....                       | 32        |
| 3 Sending reports via TCP.....                          | 33        |
| 4 Sending reports via FTP.....                          | 34        |
| 5 Reports Receiver.....                                 | 35        |
| <b>Part VII Automatic easy-to-use network inventory</b> | <b>35</b> |

---

|  |           |
|--|-----------|
| 1 What's a logon script.....                       | 36        |
| 2 Launcher.....                                    | 37        |
| <b>Part VIII How to get Statistics</b>             | <b>38</b> |
| <b>Part IX Troubleshooting</b>                     | <b>39</b> |
| <b>Part X Including MvPCinfo into your package</b> | <b>40</b> |
| <b>Part XI How to buy MvPCinfo</b>                 | <b>40</b> |
| 1 Licenses and prices.....                         | 40        |
| 2 Update policy.....                               | 41        |
| <b>Index</b>                                       | <b>0</b>  |

## 1 Welcome!

MvPCinfo is a small program that collects information about a computer's hardware and software for inventory, and other purposes. The Main features of MvPCinfo are:

- \* Operates under [all Windows](#) operating systems from Windows v 3.1 onward;
- \* [All-in-one concept](#): only one file ([mvpcinfo.exe](#) ~1M) is required;
- \* MvPCinfo doesn't require installation on the workstations and can be run from a [floppy](#), a [flash-drive](#), or [network drive](#) or from [domain login script](#);
- \* MvPCinfo can work hidden;
- \* [affordable prices](#) (all licenses allow using MvPCinfo on unlimited number of machines);
- \* [2-year](#) free update period.

Other features:

- \* MvPCinfo detects the computer components: [Processor](#), [BIOS](#), [Memory](#), [Motherboard](#), [CD-ROM](#), [Disks](#), [Video](#), [Sound](#), [Network cards](#), [IP](#), [MAC](#) and [email](#) addresses...
- \* MvPCinfo detects the computer details: [Model](#), [Manufacturer](#), [Service](#) and [Asset tags](#) (for brand PCs only)
- \* MvPCinfo detects the peripherals: [Modems](#), [Keyboards](#), [Monitor](#), [Mouse](#), [Printers](#)...
- \* MvPCinfo collects data on Installed [Software](#), [Running Processes](#) and [NT services](#)
- \* MvPCinfo lets you Edit collected data, Append and Fill in Custom Fields
- \* MvPCinfo contains embedded [LAN scanner](#) and allows [Remote Machine Testing](#)
- \* MvPCinfo provides you with flexible control with command line parameters and [Configuration File](#) (A [Configuration File Builder](#) utility is included)
- \* Report printing and data saving in [TXT](#), [CSV](#), [XLS](#), [HTM](#) and [XML](#) file formats, is provided by [MvPCinfo](#)
- \* MvPCinfo enables the creation of [customized reports](#) with [templates](#)
- \* MvPCinfo lets you to [customize view of program window](#)
- \* MvPCinfo provides [Automatic network inventory in easy-to-use manner](#)
- \* LAN and Port scanners, S.M.A.R.T. reader and File Recovery tool are enclosed

-----  
MvPCinfo Copyright 2000-16 MVsoft Co. All Rights Reserved.

WWW: [www.mvpcinfo.com](http://www.mvpcinfo.com)

E-Mail: [support@mvpcinfo.com](mailto:support@mvpcinfo.com)

## 2 What's new

What's new in **Version 3.6?** (Jun, 2016)

- \* Network adapter Speed and MTU parameters added to Network page
- \* Installed .Net packages added to OS page
- \* a few bugs were fixed

-----  
What's new in **Version 3.5?** (Feb, 2016)

- \* Security information block added to System Overview page to display the state of Security software
- \* Warnings list added to System Overview and OS pages to show alerts such as "Low disk space", "UAC is Off", "Spyware protection is outdated",...
- \* All open TCP and UDP ports are shown on the opening the Scan ports page
- \* Microsoft LiveID is now collected for Win8+

- \* NTVDM bug fixed for Win10
- \* knownports.txt has been updated

---

#### What's new in **Version 3.4?** (Oct, 2015)

- \* User information (name, group, SID and account picture) was added to System Overview page
- \* System Overview can be saved as an XLS file
- \* program collects now Windows Optional Features (new tab added to Operating System page)
- \* it collects also Security software state (new tab added to Operating System page)

---

#### What's new in **Version 3.3?** (May, 2015)

- \* program was improved for a work under Windows 10
- \* new Overview page added for quick System Overview displaying
- \* System Overview can be saved as a PDF file in both trial and registered versions
- \* some features were accelerated

---

#### What's new in **Version 3.2?** (Oct, 2014)

- \* program was improved for a work under Windows 10 (technical preview)
- \* it collects now machine's Boot Mode (Normal, Safe, Safe with Network)
- \* it collects also Session parameters (Local, Terminal, VirtualPC, VirtualBox, VMware, UAC)
- \* maximum number of touches is collected for the touchscreens

---

#### What's new in **Version 3.1?** (May, 2014)

- \* To reduce network traffic while the automatic inventory MvPCinfo.exe file size was cut by 25 percent to 800 KBytes approximately
- \* Now MvPCinfo collects Recent Files and Places – new tabs were added to Files page
- \* In the section "Desktop" the "Target" now shows command line parameters
- \* Now MvPCinfo displays installed drivers for printers

---

#### What's new in **Version 3.0?** (Jan, 2014)

- \* Now MvPCinfo creates Microsoft Office Excel XLS reports
- \* Number of Threads field was added to Processor page
- \* Information about Wi-Fi networks is now collected
- \* MvPCinfo displays descriptions for Device Manager Error Codes on Peripherals page
- \* Now you can use touch gestures to scroll tables

---

#### What's new in **Version 2.9?** (Jul, 2013)

- \* MvPCinfo was improved for a work under Windows 8.1
- \* Now you can use MvPCinfo as a report viewer - simply drag and drop TXT, CSV or XML report on it
- \* New Network Neighborhood table added to LAN scanner page
- \* New Quick Launch table added to Desktop page to show Quick Launch shortcuts collected

-----  
What's new in **Version 2.8?** (Jan, 2013)

- \* MvPCinfo collects information faster
- \* MvPCinfo retrieves Windows Experience Index for Vista onward
- \* MvPCinfo has been given new File Recovery feature on Disks page

-----  
What's new in **Version 2.7?** (Feb, 2012)

- \* MvPCinfo collects information on disks retrieved from S.M.A.R.T.
- \* Folder sizes tab was renamed to Disks and placed under Processor tab

-----  
What's new in **Version 2.6?** (Sep, 2011)

- \* MvPCinfo was improved for a work under Windows 8
- \* New Active UDPs table added to Network page to display active UDP connections
- \* New ARP table added to Network page to show Address Resolution Protocol
- \* New Route table added to Network page to show info similar to "route print" command
- \* New Hosts table added to Network page (%SYSTEMROOT%\system32\drivers\etc\hosts file content)
- \* New Trace Route page added to LAN scanner page

-----  
What's new in **Version 2.5?** (Jul, 2011)

- \* Now MvPCinfo retrieves information from WMI faster
- \* New Fonts table added to Operating System page
- \* Now Open ports detection can be forced and included into report
- \* LAN Scanner feature was improved
- \* Many other small improvements were carried out
- \* alldevs.mvd (PCI/AGP/USB/Monitor devices archive) has been updated

-----  
What's new in **Version 2.4?** (Jul, 2010)

- \* Now MvPCinfo detects multiple video cards
- \* Now MvPCinfo detects multiple monitors
- \* Detecting monitor serial numbers was improved
- \* MvPCinfo was improved to recognize Windows 2008
- \* MvPCinfo has added Command Line Parameters [-GU](#) and [-GP](#) to specify User name and Password to access remote machine
- \* New [-HNM](#) parameter shows up a Report File Name dialog in hidden mode
- \* alldevs.mvd (PCI/AGP/USB/Monitor devices archive) has been updated

-----  
What's new in **Version 2.3?** (Nov, 2009)

- \* MvPCinfo was improved for a work under Windows 7
- \* Now MvPCinfo lets you specify a [priority level](#) of its process
- \* New OS platform field added to Operating System page to display 32- or 64-bit OS version
- \* New Cores field added to Processor page to display number of CPU cores
- \* New Architecture field added on Processor page to display 32- or 64-bit processor architecture
- \* Now MvPCinfo is more stable - it [recognizes and gets around the troubles](#)
- \* MvPCinfoCfg allows you to [attach any file to MvPCinfo](#)
- \* Now you can [run other programs from within MvPCinfo](#)
- \* MvPCinfo Report Receiver (MvRepReceiver.exe) can be started as NT-service
- \* alldevs.mvd (PCI/AGP/USB/Monitor devices archive) has been updated

---

#### What's new in **Version 2.2?** (Feb, 2007)

- \* MvPCinfo was improved for a work under Windows Vista
- \* Now MvPCinfo lets you specify different content for Standard Reports generated at one run
- \* MvPCinfo enables sending reports via FTP (Site and World packages only)
- \* Now MvPCinfo can show testing stage during hidden testing
- \* Now MvPCinfo lets you hide unwanted buttons from program's Main Window
- \* -xNC excludes specific Network Adapters (PPP, VPN, VMware) from being collected
- \* alldevs.mvd (PCI/AGP/USB/Monitor devices archive) has been updated

---

#### What's new in **Version 2.1?** (Jun, 2006)

- \* MvPCinfo was improved for a work under 64-bit Windows
- \* New [Changes](#) page added to display changes occurred since last MvPCinfo start
- \* Now MvPCinfo shows Suites installed and Auto update settings on Oper.system page
- \* Now you can choose [Date Format](#) to be used on screen and in the reports
- \* New [Folder sizes](#) page added to display disk utilization
- \* New [Port Scanner](#) page added to discover open ports
- \* Now you can delete unwanted AutoRun and BHO items via contextual menus
- \* Now MvPCinfo [Reports Receiver](#) works also as a POP3 client
- \* [Authorization](#) parameters can be specified for SMTP servers
- \* Now you can specify additional files to be [emailed](#) together with report and send attachment ZIPped
- \* alldevs.mvd (PCI/AGP/USB/Monitor devices archive) has been updated

---

#### What's new in **Version 2.0?** (Nov, 2005)

- \* Now MvPCinfo collects and shows Microsoft Products ID keys on Licenses page
- \* New Files page added to display files found while Software searching
- \* Membership in Local Groups field added to Network page
- \* New Local Group Users table added to Accounts NT page
- \* Now MvPCinfo shows OS ID key on Oper.system page
- \* Browser Start Pages list added to Internet page
- \* MvPCinfo enables [sending reports via TCP](#) (Site and World packages only)
- \* Now MvPCinfo can save reports to [password protected folders](#)
- \* Now you can mask [Configuration File](#) to hide inventory settings from network users
- \* Now you can [customize](#) program's Main Window and Hidden Mode Message
- \* alldevs.mvd (PCI/AGP/USB/Monitor devices archive) has been updated

---

#### What's new in **Version 1.9?** (Apr, 2005)

- \* New Engines page added to display information about ADO, BDE, DirectX, .Net, ODBC, OpenGL, WinSock...
- \* New Profiles table added to Accounts NT page
- \* Now MvPCinfo shows AC Power and Battery states
- \* New [LAN scanner](#) page added to collect information about LAN machines within specified IP range
- \* New Typed URLs, Browser Helper Objects and Favorites tables added to Internet page
- \* Now Internet Visits list can be resorted by visit date and hits count
- \* Now you can clean up Internet Visits history and Typed URLs
- \* Now MvPCinfo shows Wallpaper information on Desktop page
- \* Now you can delete unwanted Desktop items via contextual menu on Desktop page
- \* MvPCinfo has an improved Remote Testing feature for Windows NT/2K/XP/2003 machines
- \* alldevs.mvd file has been updated

---

What's new in **Version 1.8?** (Jul, 2004)

- \* MvPCinfo became compatible with Windows 2003 Server
- \* New PCI/AGP page added to display PCI and AGP components
- \* New Scheduled tasks table added to AutoRun page
- \* New Desktop page added to display desktop items
- \* Now MvPCinfo shows Publisher information on Add/Remove, Processes, Services and Software pages
- \* Now MvPCinfo shows Last Access information on Software page
- \* Now MvPCinfo shows information about each installed PageFile in the system
- \* Now MvPCinfo shows Security Events log
- \* New Auto-Hide Menu feature: MvPCinfo auto-hides the menu panel to provide more space for retrieved data
- \* MvPCinfo has added a new Command Line Parameter -xAHM to disable Auto-Hide Menu feature
- \* Now you can [customize the look](#) of Custom Fields Wizard Dialog
- \* MvPCinfo has added a new Command Line Parameter -iUsbAct to display active USB devices only
- \* Now MvPCinfo program package contains a file called alldevs.mvd file to give more precise recognition of PCI, USB and Monitor devices

---

What's new in **Version 1.7?** (Nov, 2003)

- \* Now MvPCinfo shows IRQ list and DMA channels
- \* New page Events NT added to display System and Application Events
- \* MvPCinfo enables [Remote Machine Testing](#) (Site and World packages only)
- \* Now MvPCinfo allows you to specify a type of Custom Field: Line, YesNo, List, FixedList, CheckList, Radiolist and Memo.
- \* MvPCinfo has been given new [Assoc.Licenses](#) feature to retrieve additional number of licenses basing on captions, versions and file names of collected software
- \* Now testing in visual mode can be interrupted at any moment
- \* MvPCinfo has added a new Command Line Parameters -RMV to remove MvPCinfo.exe from disk right after the testing ends (Site and World licenses only)
- \* MvPCinfo has added a new Command Line Parameter -iIEHF to include Internet Explorer Fixes into Hot Fixes list
- \* Command Line Parameter -E has been extended to organize inventory by week days
- \* MvPCinfo has added a new Command Line Parameters -rhE and -rhEC to exclude empty items and empty Custom Fields from the reports
- \* [Launcher](#) can be configured to run MvPCinfo periodically
- \* Maximize button has been added
- \* Now you can click any line in tables to see truncated cells in hint window

---

What's new in **Version 1.6?** (May, 2003)

- \* New pages added to display Regional settings, Accounts NT, Add/Remove programs
- \* Motherboard and monitor serial numbers are retrieved where available
- \* Third and fourth fixed disks can be displayed with sizes and serial numbers
- \* New network parameters: network clients, services, adapter type, DNS, DHCP, WINS, node type and IP routing
- \* New Internet data: connection, proxy server, visits history with approx. number of hits and last visit date
- \* Regional settings: country, language, time zone, currency, date/time formats, DVD region...
- \* Now [Configuration File](#) can be attached directly to mvPCinfo.exe (Site and World licenses only)
- \* Now MvPCinfo can create encoded reports to provide more privacy of automatic inventory (Site and World licenses only)



- \* Now MvPCinfo can save report to Clipboard instead of file ([-iCB](#))
- \* MvPCinfo has added Command Line Parameters [-RHV](#) and [-RHD](#) to exclude software versions and other details from report
- \* UTF-8 encoding is available now for TXT reports ([-REUTF8](#))
- \* MvPCinfo can now to retrieve [Custom Fields](#) values from WMI
- \* Now any Custom Field can be provided with [Wizard Dialog](#) to be filled in by user during machine testing
- \* MvPCinfo has added Command Line Parameter [-NA](#) to specify compound report file name
- \* MvPCinfo has added Command Line Parameter [-IDS](#) to desktop shortcuts referring to network resources into Mappings report
- \* Check/Uncheck All buttons were moved into Report Page's contextual menu

---

#### What's new in **Version 1.50?** (Nov, 2002)

- \* New pages added: Processor, Oper.system, Internet, AutoRun and Licenses.
- \* Detecting chassis type and role of computer
- \* Retrieving motherboard slots and ports
- \* MvPCinfo displays processor's serial number, family, model, stepping and vendor signature
- \* Now MvPCinfo detects serial numbers and sizes for hard disks
- \* New parameters on network page: subnet, default gateway and active TCP connections
- \* Now MvPCinfo can create three reports at one run
- \* New retrieved devices: SCSI, PCMCIA, USB and devices with problems
- \* New detailed OS page including hot fixes and page file information
- \* Retrieving Internet visits history (IE, Netscape only)
- \* Now MvPCinfo shows list of AutoRun programs
- \* List of software licenses found with identification code
- \* Enhanced template reports (using itemX keywords for cycles)
- \* Using fixed values and functions for custom fields
- \* Now MvPCinfo deletes previously created reports rather than creating BAK (please see [-iBAK](#) parameter)
- \* New [-log](#) parameter for troubleshooting purposes
- \* Now Site and World packages include [PCinfo launcher](#) application to eliminate network traffic during automatic inventory
- \* New [-uDS](#), [-uCS](#) command line parameters to specify decimal point and CSV columns separators
- \* New command line parameter [-RHP](#) to exclude software paths from report
- \* Updated [-FD](#) parameter to exclude specified files from software report
- \* New Quick Save button to save reports as specified in configuration file

---

#### What's new in **Version 1.40?** (Apr, 2002)

- \* MvPCinfo became compatible with Windows XP
- \* Now the MvPCinfo program package contains a [Configuration File Builder](#) application (MvPCinfoCfg.exe)
- \* MvPCinfo has been given new detecting features for Win98/Me/2K/XP: System Model and Manufacturer, Processor's external Clock Frequency, Memory slots, Motherboard Socket, Service and Asset tags (for brand PCs only)
- \* MvPCinfo enables Sending Reports [using E-Mail](#)
- \* MvPCinfo has added Command Line Parameters [-WNH](#), [-WNW](#) to specify utility's window sizes.
- \* Now more email addresses can be detected
- \* Now MvPCinfo allows you to [skip any test](#) on a separate PC
- \* MvPCinfo has added a new Command Line Parameter [-FI](#) to force software searching in specified directory(s)
- \* MvPCinfo has added a new Command Line Parameter [-HDME](#) to show hard disk and memory sizes in

megabytes

- \* MvPCinfo now enables the detecting of Secondary Hard Disk
- \* MvPCinfo has added a special mark to show a Default Printer
- \* MvPCinfo has added a new Command Line Parameter [-CH](#) to specify a charset
- \* MvPCinfo has enabled DOS Environment variables to be used in [Custom Fields](#) and in [-D](#) parameter

---

What's new in **Version 1.31?** (Dec, 2001)

- \* MvPCinfo added new fields to show System Last Boot, Uptime and Installation date
- \* MvPCinfo added Free Disk Space charts
- \* MvPCinfo added Resolution and Color Mode to Video Card data
- \* MvPCinfo added new Processes page to show running Processes, Applications and NT services
- \* MvPCinfo added [-HJS](#) Command Line Parameter to include Hidden Shares into report
- \* MvPCinfo added [-JPPP](#) Command Line Parameter to include PPP Adapter found into report
- \* MvPCinfo has now enabled Column Mode making it available for TXT and CSV reports ([-RC](#))
- \* MvPCinfo added new Command Line Parameters [-RHH](#), [-RHF](#) to exclude headings and footnotes from reports
- \* MvPCinfo has added the new command line parameter [-FV](#) to exclude software without Version Information enclosed in its executable file
- \* The MvPCinfo Software Report includes now file sizes in bytes
- \* MvPCinfo now let's you save the XML reports
- \* MvPCinfo has added [-reXML](#) Command Line Parameter to apply XML encoding for values in template report
- \* MvPCinfo has added a new Command Line Parameter [-NM](#) to use any retrieved value as a name for a report file
- \* In MvPCinfo [Custom Fields](#) can now be configured with a list of predefined values

---

What's new in **Version 1.30?** (Jun, 2001)

- \* MvPCinfo added a new Network page with: Net description, User, Domain, Workgroup, Local shares and Drive Mapping
- \* Now MvPCinfo supports Report Templates
- \* MvPCinfo now shows Processor Frequency normalized
- \* Now MvPCinfo detects Environment Variables
- \* CPU detection has been improved
- \* A Minimize box now appears on title bar
- \* Stop button was placed on Status Panel
- \* A new [-E](#) Command Line Parameter specifies testing frequency per day
- \* A new [-FA](#) Command Line Parameter forces the utility to collect files with any extensions
- \* A new [-FD](#) Command Line Parameter excludes disks and directories from software searching
- \* MvPCinfo added improved Windows Help

---

What's new in **Version 1.25?** (Feb, 2001)

- \* MvPCinfo Status bar was changed to floating panel
- \* Hidden running became more completely hidden
- \* Word-wrap feature on software page
- \* Application form became fully resizable
- \* New [-D](#) Command Line Parameter to specify directory where info files to be saved
- \* New [-MS](#) Command Line Parameter to control the software detecting
- \* New [-CCS](#) ([-CCD](#)) Command Line Parameter to save second copy of info.

---

What's new in **Version 1.24?**

- \* MvPCinfo became compatible with Windows Me.
  - \* Now you can add, fill and save custom data fields
  - \* New Command Line Parameter for software filtering
  - \* Configuration file implemented for more convenience
  - \* New MvPCinfo.htm file gives whole information on the utility
  - \* Detects OS language
  - \* Software searching improved
  - \* Detecting can be stopped at any time by pressing Esc
  - \* Software table can be edited with popup menu commands
  - \* Now you can get Help by pressing F1 button
- 

#### What's new in **Version 1.23?**

- \* MvPCinfo becomes compatible with Windows 2000.
  - \* E-mail address detecting
  - \* E-mail clients detecting
- 

#### What's new in **Version 1.22?**

- \* New Command Line Parameter to exclude any hardware test.
  - \* New status line on the bottom of the form to display current detecting state.
  - \* Enabled saving data in Microsoft Excel Comma Separated Values (CSV) format.
- 

#### What's new in **Version 1.21?**

- \* More than one Network Cards detectable under WinNT.
  - \* New page with a list of locally installed software.
  - \* New Command Line Parameters to control a report.
- 

#### What's new in **Version 1.20?**

- \* New interface with multi pages. Now the MvPCinfo window is more compact.
  - \* Detecting processor features and L1,L2-cache sizes.
  - \* Detecting network card physical address (MAC address).
  - \* Report page: Now you can choose what items to print and save.
- 

## 3 Introduction

### 3.1 What's in MvPCinfo

MvPCinfo is a small program that collects information about a computer's hardware and software for inventory, and other purposes. The Main features of MvPCinfo are:

- \* Operates under [all Windows](#) operating systems from Windows v 3.1 onward;
- \* [All-in-one concept](#): only one file ([mvpcinfo.exe](#) ~1M) is required;
- \* MvPCinfo doesn't require installation on the workstations and can be run from a [floppy](#), a [flash-drive](#), or [network drive](#) or from [domain login script](#);
- \* MvPCinfo can work hidden;
- \* [affordable prices](#) (all licenses allow using MvPCinfo on unlimited number of machines);
- \* [2-year](#) free update period.

Other features:

- \* MvPCinfo detects the computer components: [Processor](#), [BIOS](#), [Memory](#), [Motherboard](#), [CD-ROM](#), [Disks](#), [Video](#), [Sound](#), [Network cards](#), [IP](#), [MAC](#) and [email](#) addresses...
- \* MvPCinfo detects the computer details: [Model](#), [Manufacturer](#), [Service](#) and [Asset tags](#) (for brand PCs only)
- \* MvPCinfo detects the peripherals: [Modems](#), [Keyboards](#), [Monitor](#), [Mouse](#), [Printers](#)...
- \* MvPCinfo collects data on Installed [Software](#), [Running Processes](#) and [NT services](#)
- \* MvPCinfo lets you Edit collected data, Append and Fill in Custom Fields
- \* MvPCinfo contains embedded [LAN scanner](#) and allows [Remote Machine Testing](#)
- \* MvPCinfo provides you with flexible control with command line parameters and [Configuration File](#) (A [Configuration File Builder](#) utility is included)
- \* Report printing and data saving in [TXT](#), [CSV](#), [XLS](#), [HTM](#) and [XML](#) file formats, is provided by MvPCinfo
- \* MvPCinfo enables the creation of [customized reports](#) with [templates](#)
- \* MvPCinfo lets you to [customize view of program window](#)
- \* MvPCinfo provides [Automatic network inventory in easy-to-use manner](#)

## 3.2 How it works

MvPCinfo is a small Win32 application, which uses Win32 API layer to collect information about the PC. This approach makes MvPCinfo "native" for all Windows operational systems above 3.1. That means MvPCinfo performs testing with minimal trouble - it doesn't require installation and rebooting; it doesn't create DOS-windows and may be run invisibly.

When you run MvPCinfo on the tested computer it tries to get data directly from the components and devices. For example, it sends CPUID the command to processor to detect it and its features. The second step carried out by MvPCinfo uses MS Windows API to get data on undetected components. Finally MvPCinfo applies for information from the Windows Registry and Windows Management Instrumentation (WMI).

## 3.3 Evaluation and full versions differences

The limitations of MvPCinfo's evaluation version are as follows:

- \* saving and printing functions are disabled (demo reports are included into evaluation package as report\_example.\* files);
- \* evaluation period is **30** days after a first run.

**Important!** There aren't differences in detecting capabilities between evaluation and registered versions!

## 3.4 What's in package

MvPCinfo's [Personal](#) package contains following files:

|                                 |  |
|---------------------------------|--|
| <a href="#">mvPcInfo.exe</a>    | -main inventory program                      |
| <a href="#">mvPCinfoCfg.exe</a> | - <a href="#">configuration file builder</a> |
| <a href="#">mvPCinfo.chm</a>    | -this help file                              |

`alldevs.mvd` -PCI/AGP, USB and Monitor devices archive  
`knownports.txt` -list of known TCP/UDP port numbers and thier descriptions for [Port Scanner](#)  
`template.*` -TXT, CSV, HTM and XML report template examples

MvPCinfo's [Evaluation](#) package contains additionally  
`report_example.*` -TXT, CSV, HTM and XML reports examples

MvPCinfo's [Site and World](#) packages contain also:

`mvPCinfoA.exe` -small program that runs MvPCinfo as administrator (should be placed near MvPCinfo.exe)  
`mvPCinfoL.exe` -[Launcher](#) program  
`mvRepReceiver.exe` -[Report Receiver](#) program

## 4 Operating

### 4.1 Software searching

MvPCinfo, by default, collects software placed on a desktop and in menus of a tested PC. This procedure is quick but does not provide exhaustive information on installed software. There is a special Command Line Parameter ([-ms](#)) which defines where MvPCinfo must perform software searching.

Available values of [-ms](#) parameter are:

**N** - no software searching at all  
**D** - searching on desktops  
**M** - searching in menus  
**R** - searching in Registry  
**P** - searching in Program Files folders on all hard disks  
**0, 1, 2...** - depth of software scanning on the hard disks:  
     **0** - full depth  
     **1** - hard disks roots ([c:\](#), [d:\](#) and so on)  
     **2, 3...** - 2, 3 and more subdirectories depth to be scanned

Examples: [-msDM](#) or [-msDMRP](#) or [-msDM7](#) and so on...

Also you can specify a set of directories where you do want the software searching to be performed using [-fi](#) command line parameter. For example,

[-msN -fiC:\Now ell -fi"d:\program files"](#)

this parameter's combination forces MvPCinfo to search software only in [c:\nowell](#) and [d:\program files](#) folders

If program runs without [-ms](#) parameter - searching is performed as with [-msDM](#) installed. Note please that using [-ms](#) parameter with **P** and **0, 1...** values increases the time spent testing.

**Important!** To activate software detecting in Hidden mode it is necessary to place [-onSoftware](#) parameter into command line or [configuration file](#).

How to filter detected software, please see [-F](#) command line parameter.

### 4.2 Associated Licenses

MvPCinfo connects to WMI server to get information about registered software licenses. Also it's possible to retrieve additional number of licenses basing on captions, versions and file names of

collected software. Please use [Configuration File Builder](#) (Assoc.Licenses page) to create and edit a list of license associations.

| General  | Reports                  | Searching the software | E-Mail                 | Custom fields | Assoc.Licences | About |
|--|--------------------------|------------------------|------------------------|---------------|----------------|-------|
| Please specify the rules to associate software items with licenses |                          |                        |                        |               |                |       |
| Assoc.License name   | Software captions        | Software versions      | Software file names    |               |                |       |
| MS Office 2000   | Microsoft Word; Microsof | 9.0                    | winword.exe; excel.exe |               |                |       |
| MS Office XP   | Microsoft Word; Microsof | 10.0                   | winword.exe; excel.exe |               |                |       |


While testing MvPCinfo compares collected software items with the table of specified associations. If software item satisfies the conditions of some association - corresponding Associated License is placed into Assoc.Licenses table on MvPCinfo Licenses page.

If for some association you leave software captions, versions or file names empty - it is considered that any value is suitable for this license. Also you can specify a number of suitable values for each captions, versions and file names parameter - simply list all appropriate values with semicolon as a divider.

## 4.3 Detecting changes

MvPCinfo can detect changes happened on a machine since last MvPCinfo start. If this feature isn't turned off (-noChanges parameter) and testing process wasn't interrupted by user - program stores collected information on a machine in user's [Application Data](#) folder in YYYY-MM-DD(HH-MM).mvr file. When next run, MvPCinfo finds last stored \*.mvr file, compares its content with newly collected data and displays differences on the [Changes](#) page.

MvPCinfo doesn't compare and display changes for [Last boot](#), [Booted](#), [Uptime](#); [System](#), [Security](#) and [Application Events and Changes](#) sections. For [Inet visits](#) - it shows the only URLs that were visited since the date of previous report.

MvPCinfo doesn't delete stored \*.mvr files itself to provide you with opportunity to compare newly collected data with any data collected in the past. To free disk space from needless \*.mvr files - please switch to Changes page, click  button and delete them manually.

## 4.4 LAN Scanner

MvPCinfo's LAN Scanner page allows you to scan your LAN for machines that are present. MvPCinfo scans all IP addresses in specified range and collects information in table.

Scan IPs from

172.17.177.100


to

172.17.177.150

| IP             | Name       | Description | MAC               | Dsn            | OS    | Type    | Shares          |
|----------------|------------|-------------|-------------------|----------------|-------|---------|-----------------|
| 172.17.177.109 | MAYOROVA   | ALENA       | 00-50-04-38-57-9C | MAYOROVA       | Win95 | worksta | IPC\$; АЛЕНКА   |
| 172.17.177.110 | WIZARD     |             | 00-A0-C9-4A-12-66 | WIZARD         | WinNT | server  | ADMIN\$; C\$; D |
| 172.17.177.114 | CHISTYAKOV |             | 00-90-27-1C-E9-61 | CHISTYAKOV     | WinNT | worksta | ADMIN\$; C\$; I |
| 172.17.177.115 | MALASHKINA |             | 00-10-DC-07-E1-FA | malashkina.lan | Win2K | worksta | ADMIN\$; C\$; D |
| 172.17.177.118 | IDB        |             | 00-02-B3-91-6D-FE | idb.lan.mvsoft | Win2K | worksta | ADMIN\$; C\$; D |



Double-click Shares cell to view shared folder in Windows Explorer




To start scanning specify From and To IP addresses and click  button; to stop - click  button.

Scan results can be saved as TXT, CSV or HTM file by clicking  button.  
Double-clicking any cell in the Shares column will display a list of shared resources on screen - select any item in that list, to open it in Windows Explorer.

## 4.5 Port Scanner

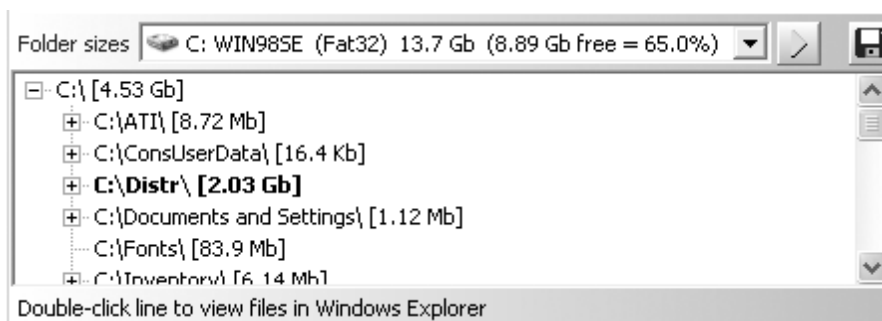
MvPCinfo's Port Scanner page allows you to discover open TCP ports for local or remote machine. MvPCinfo scans all ports in range from 0 up to 65535 and collects information in table.



| IP 172.17.177.100  |          |       |                                  |  |
|---|----------|-------|----------------------------------|---|
| Port  | Protocol | State | Description                      |   |
| 25  | tcp      | open  | Simple Mail Transfer             |   |
| 110   | tcp      | open  | Post Office Protocol - Version 3 |   |
| 111   | tcp      | open  | SUN Remote Procedure Call        |   |
| 135   | tcp      | open  | DCE endpoint resolution          |   |
| 139   | tcp      | open  | NETBIOS Session Service          |   |
| 445   | tcp      | open  | Microsoft-DS                     |   |
| 1047  | tcp      | open  | Sun's NEO Object Request Broker  |   |

To start scanning specify IP address and click  button; to stop - click  button. Scan results can be saved as TXT, CSV or HTM file by clicking  button.  
MvPCinfo has wired-in table to associate port numbers with their descriptions for all well-known ports. To associate more ports - place [knownports.txt](#) file near mvpcinfo.exe...

## 4.6 Folder sizes

Folder Sizes page allows you to explore disk utilization. MvPCinfo creates a folder tree for specified disk drive. Every line contains total folder size that includes sizes of all subfolders. If certain folder size is more than a 25% of size of parent folder - this folder is highlighted.



To start calculating specify disk drive and click  button. Report can be saved as TXT, CSV or HTM file by clicking  button.

## 4.7 Remote Machine Testing

[Site and World](#) versions of MvPCinfo allow you to retrieve basic information from a remote machine. MvPCinfo doesn't require to be installed there - instead it connects to remote machine's WMI server and Registry.

To start remote testing use [-GO](#) command line parameter or enter the remote machine's network name

or IP address into [Computer](#) field on MvPCinfo's [Station](#) page and press [Enter](#). MvPCinfo will try to connect to the remote machine's WMI server and to its Registry using your actual Rights. Remote testing may take more time to perform.

**Important!** Your ability to retrieve data remotely depends upon the Rights you have over the remote machine. You'll need to have the rights of an Administrator to obtain most data.

## 5 Configuring

### 5.1 Command line parameters

[Save report to file \(-S, -RA, -RC, -RHH, -RHF, -RHP, -RHV, -RHD, -RHE, -RHEC, -HNM\)](#)  
[Report output directory \(-D, -PWDU, -PWDP\)](#)  
[Save second report to file \(-CCS, -CCD, -CCRC, -CCRHH, -CCRHF, -CCRT, -CCNM\)](#)  
[Save third report to file \(-CC3S, -CC3D, -CC3RC, -CC3RHH, -CC3RHF, -CC3RT, -CC3NM\)](#)  
[Skip items detection \(-NO\)](#)  
[Include and exclude data from report \(-ON, -OFF, -IHS, -IPPP, -IDS, -IIEHF, -IUsbAct\)](#)  
[Date format \(-FMD\)](#)  
[Filter detected software \(-FS, -FE, -FI, -FD, -FV\)](#)  
[Software detecting mode \(-MS\)](#)  
[Collect data on other files \(-FA\)](#)  
[Detecting frequency per day \(-E\)](#)  
[Report template file \(-RT\)](#)  
[Report file name \(-NM, -NA, -RNUP\)](#)  
[Encoding the reports \(-REXML, -REUTF8, -RENC\)](#)  
[Show hard disk info in MB \(-HDMB\)](#)  
[Sending the reports via e-mail \(-MLGO, -MLTO, -MLSB, -MLTX, -MLSR, -MLSM, -SMMA\)](#)  
[Sending the reports via TCP \(-TCPHOST, -TCPPOINT, -TCPOUT, -TCPFOLD\)](#)  
[Sending the reports via FTP \(-FTPHOST, -FTPPOINT, -FTPPOINT, -FTPPOINT, -FTPPOINT, -FTPPOINT, -FTPPOINT\)](#)  
[Specify charset \(-CH\)](#)  
[Window sizes \(-WNH, -WNW\)](#)  
[Decimal point and CSV separators \(-UDS, -UCS\)](#)  
[Backup existing report \(-iBAK\)](#)  
[Logging the tests \(-LOG\)](#)  
[Path to MvPCinfo.ini \(-INI\)](#)  
[Save to Clipboard \(-ICB\)](#)  
[Show message during hidden testing \(-HMES\)](#)  
[Disable the Auto-Hide menu feature \(-xAHM\)](#)  
[Test remote PC \(-GO, -GU, -GP\)](#)  
[Remove executable right after the testing ends \(-RMV\)](#)  
[MvPCinfo process priority \(-priLow, -priNormal, -priHigh\)](#)

(Please see also The rules for writing the parameters)

-----  
 -  
**Save report to file (-S, -D, -RA, -RC, -RHH, -RHF, -RHP, -RHV, -RHD, -RHE, -RHEC, -HNM):**  
**-s** saves data in the utility folder as [CompName](#).TXT and exits  
**-shmt** saves data in the utility folder as [CompName](#).HTM and exits  
**-scsv** saves data in the utility folder as [CompName](#).CSV and exits  
**-sxml** saves data in the utility folder as [CompName](#).XML and exits  
**-sFileName** saves data to file and exit (only TXT, HTM, CSV, XML extensions allowed)  
**-ra** set active flag to report (effective for visual mode only)



- rc saves TXT and CSV reports divided into columns
- hnm shows up a dialog to specify Report File Name in hidden mode
- rhh excludes «header» from report
- rhf excludes «footer» from report
- rhe excludes empty fields from report
- rhec excludes empty Custom Fields from report

`CompName` is a value placed in Computer field of `MvPCinfo`'s Station page. **Important!**

Using `-s` parameter will result in **Hidden** executing of utility (without its appearance on screen). Please do not forget to turn on all required report items using `-on` parameter (e.g. `-onSoft,Processes,Services`).

- rhv excludes software versions from report
- rhd excludes software details (date,size,...) from report
- rhp excludes software paths from report

These parameters have effect on Processes, AutoRun, Add/Remove and Software sections simultaneously.

#### Report output directory (-D,-PWDU,-PWDP):

- dDirName specifies directory where files to be saved (e.g. `-dC:\PCinfo\` or `-d"\\Server\Info files"` or `-d%Temp%`)
- pwdU specifies User name to access password protected folder (e.g. `-pw du"idb"` or `-pw du"MyDomain/idb"`)
- pwdP specifies Password to access protected folder (e.g. `-pw dp"MySecretWord"`)

Being run in hidden mode `MvPCinfo` tries to save report(s) in specified directory. If this directory doesn't exist - `MvPCinfo` will try to create it. You can use a reference to DOS Environment variable as a part of `DirName`. Variable name should be enclosed into % symbols to be replaced with corresponding value from tested PC.

(For second and third reports please use `-ccd,-pw 2u,-pw 2p,-cc3d,-pw 3u` and `-pw 3p` parameters correspondingly)

#### Save second report to file (-CCS, -CCD, -CCRA, -CCRC, -CCRHH, -CCRHF, -CCRHP, -CCRT, -CCNM):

These parameters are the analogues of `-S, -D, -RA, -RC, -RHH, -RHF, -RHP, -RT` and `-NM` parameters. They specify parameters values for creating the **second** report at one run.

#### Save third report to file (-CC3S, -CC3D, -CC3RA, -CC3RC, -CC3RHH, -CC3RHF, -CC3RHP, -CC3RT, -CC3NM):

These parameters are the analogues of `-S, -D, -RA, -RC, -RHH, -RHF, -RHP, -RT` and `-NM` parameters. They specify parameters values for creating the **third** report at one run.

#### Skip items detection (-NO):

- noReportItem1[,ReportItem2,...] (e.g. `-noIP,MAC,Software`)

`ReportItem` is beginning part or whole name of the skipped item (spaces and dots aren't allowed). You can find all available report items on the `MvPCinfo`'s Report page.

#### Include and exclude data from report (-ON, -OFF, -IHS, -IPPP, -IDS, -IIEHF, -IUSBACT):

- onReportItem1[,ReportItem2,...] checks report item (e.g. `-onSoftware`)

-offReportItem1[,ReportItem2,...]      unchecks report item (e.g. -offPrinters,Other)  
 -iHS      includes Hidden Shares into report  
 -iPPP      includes PPP Adapter into report  
 -iDS      includes desktop shortcuts referring the network resources into Mappings report  
 -iIEHF      includes Internet Explorer Fixes into Hot Fixes list  
 -iUsbAct      includes active USB devices only into report

-----  
 -  
Date Format (-FMD):

-fmd specifies Date representation format to be used on screen and in the reports (e.g. -fmd"dd.mm.yyyy")

By default, MvPCinfo uses dd-mmm-yyyy format to display date. You can use this parameter to specify one from the list: dd-mmm-yyyy, dd.mm.yyyy, m/d/yy, d/mm/yyyy, dd/mm/yyyy, d-m-yyyy, dd-mm-yyyy, yyyy-mm-dd.

-----  
 -  
Disable the Auto-Hide menu feature (-xAHM):

-xAHM disables auto-hiding the program's menu

-----  
 -  
Filter detected software (-FS, -FE, -FI, -FD, -FV):

-fsSubstr1[,Substr2,...]      includes software (e.g. -fsAdobe,Micro,Word,Cut or -fs"Adobe Photo,Cut")  
 -feSubstr1[,Substr2,...]      excludes software (e.g. -feUninst)  
 -fiDirName1[,DirName2,...]      forces searching in DirName folder and its subfolders (e.g. -fi"e:\programs,c:\now ell")  
 -fdDirName1[,DirName2,...]      excludes software placed in DirName and its subfolders (e.g. -fd"c:\program files,d,;%SystemRoot%")  
 -fdFileName1[,FileName2,...]      excludes files ending with FileName (e.g. -fd"uninstall.exe,unwise.exe")  
 -fv      excludes files without Version Information structure enclosed

Substrs are the string filters. Only software whose names include any of these strings will be included or excluded into/from Software list.

-----  
 -  
Software detecting mode (-MS):

-ms[N][D][M][R][P][0][1][2]... (e.g. -msDMP0 or -msDMR or -msDM7)  
 N      skips software searching at all  
 D      forces software searching on the desktops  
 M      retrieves software listed in menus  
 R      searching in Registry  
 P      detects software in Program Files folder on hard disks  
 0,1,2... depth of software scanning on the hard disks:  
   0      full depth  
   1      hard disks roots (c:\, d:\ and so on)  
   2,3,.. 2,3 and more subdirectories depth to be scanned

If program runs without -ms parameter - searching is performed as with -msDM. **Important!**  
 It is required to place -onSoftware parameter into command line to activate software detecting in Hidden mode.

Collect data on other files (-FA):

`-faExt1[,Ext2,...]` list of extensions separated with comma (e.g. `-faMp3,Db`)

`Ext` is a desired extension without leading point. **Important!** This parameter works only if used together with `-msX` parameter where `X` is a desired subdirectories scanning depth.

-----  
-

Data collection frequency by week days (-E):

`-e[DaysNumber][([Wd=From1-To1[;Wd=From2-To2]...)]...` (e.g. `-e1` or `-e7(Mo=A-KL;Tu=KM-P;We=N-Z)`)

This parameter allows you to specify how often `MvPCinfo` should perform detecting. Default value of `DaysNumber` (0) means that detecting is performed every time you run `MvPCinfo`. Other values (1,2,...) force `MvPCinfo` to execute testing once per corresponding days number, you set. For example `-e14` means that utility will perform testing once per 2 weeks. `MvPCinfo` stores date of last test in `%SystemRoot%\mvPCinfo.ini` file on tested PC and use that date to decide: perform testing or skip it.

Also you can adjust `MvPCinfo` to organize inventory by week days - you'll need to specify a number of formulas `Wd=From1-To1` placed in brackets and divided by semicolon (;):

`(Wd=From1-To1; Wd=From2-To2;...)`

Here `Wd` is a 2 letters week day abbreviation (`Su`, `Mo`, `Tu`, `We`, `Th`, `Fr` or `Sa`). `FromX` and `ToX` are the starting parts of the computer names. If a name of computer lies between `FromX` and `ToX` - this machine will be tested on corresponding day of week.

-----  
-

Report template file (-RT):

`-rtFileName` (e.g. `-rt"\\Server\PCinfo files\Templ.txt"` or `-rtC:\PCinfo\MyTempl.mer`)

`FileName` specifies where report template file is placed. Using this parameter you force the utility to save info files in form of template files. (see also [Report templates](#))

-----  
-

Report file name(-NM,-NA,-RNUP):

`-nmFieldName` specifies report file name (e.g. `-nmUser` or `-nmIP`)

`-naFieldName` specifies additional report file name (e.g. `-naUser` or `-naIP`)

`FieldName` is beginning part or whole name of any data field including names of custom fields (spaces and dots aren't allowed). Before saving the report to file `MvPCinfo` checks value of this field. If the value exists - `MvPCinfo` uses this value as a name of report file instead of computer name. If `NA` parameter is specified report file name will consist of two parts divided with "-" (e.g. `location - user.txt`)

`-mUp` forces `MvPCinfo` to convert report file names to upper case. (e.g. `MYCOMP.TXT` instead of `MyComp.txt`)

-----  
-

Encoding the reports (-REXML,-REUTF8,-RENC):

`-reXML` forces `MvPCinfo` to encode reported values in accordance with rules of *Extensible Markup Language (XML) 1.0 (Second Edition)*. This feature works only if report is created with use of template files. (see also [Report templates](#))

`-reUTF8` forces `MvPCinfo` to use UTF8 encoding to TXT reports

`-renc` forces `MvPCinfo` to apply simple encoding to the reports to provide more privacy of retrieved data.

Encoded reports are decoded automatically during import by [MvPCbase](#) program or may be decoded by [Configuration File Builder](#). **Important! Encoding works for Site and World versions only.**

-----  
-  
Show hard disk information in MB (-HDMB):

-hdMB

By default, [MvPCinfo](#) uses most appropriate units (KB,MB,GB) to show disk and memory sizes. This parameter forces [MvPCinfo](#) to show these values in megabytes only.

-----  
-  
Sending the reports via e-mail (-MLGO,-MLFR,-MLTO,-MLSB,-MLTX,-MLSR,-MLSM,-SMMA):

-mlGO forces utility to send report via e-mail (available for Site and World licenses only)  
-mlFR specifies sender's e-mail address (e.g. -mlFr"yourName@domain.com")  
-mlTO specifies recipient's e-mail address (e.g. -mlTo"reports@domain.com")  
-mlSB specifies subject field of report mail (e.g. -mlSB"MvPCinfo report")  
-mlTX specifies text content of report mail (e.g. -mlTX"This mail was sent automatically....")  
-mlSR specifies local SMTP server (e.g. -mlSR"smtp.lan.domain.com")  
-mlSM forces sending a mail thru SMTP server only  
-mlMA forces sending a mail via MAPI software only

Please see the details in [Sending reports via E-Mail](#)

-----  
-  
Sending the reports via TCP (-RST,-TCPHOST,-TCPPOINT,-TCPTIME,-TCPFOLD):

-rst forces [MvPCinfo](#) to send report via TCP  
-tcpHOST specifies network name or IP address of a host machine where MvRepReceiver program runs (e.g. -tcpHost"MyNetworkServer" or -tcpHost"172.17.177.100")  
-tcpPORT specifies TCP port number - the same value as is specified in MvRepReceiver (e.g. -tcpPort"11112")  
-tcpTIME specifies number of seconds allowed to execute report transmission before the connection will be interrupted by [MvPCinfo](#) (e.g. -tcpTime"100")  
-tcpFOLD specifies name of subfolder in destination folder number of Host machine (e.g. -tcpFold"Moscow")  
(For second and third reports please use -r2st,-tcp2host,-tcp2port,-tcp2time,-r3st,-tcp3host,-tcp3port and -tcp3time parameters)

Please see the details in [Sending reports via TCP](#)

-----  
-  
Sending the reports via FTP (-RSP,-TCPHOST,-TCPPOINT,-TCPTIME,-TCPFOLD):

-rsp forces [MvPCinfo](#) to send report via FTP  
-ftpHOST specifies URL or IP address of a host machine where FTP-server runs (e.g. -ftpHost"ftp.mvpcinfo.com" or -ftpHost"172.17.177.100")  
-ftpPORT specifies FTP port number (e.g. -ftpPort"21")  
-ftpTIME specifies number of seconds allowed to execute report transmission before the connection will be interrupted by [MvPCinfo](#) (e.g. -ftpTime"100")  
-ftpFOLD specifies name of directory where report to be uploaded (e.g. -ftpFold"upload")  
(For second and third reports please use -r2sp,-ftp2host,-ftp2port,-ftp2time,-r3sp,-ftp3host,-ftp3port and -ftp3time parameters)

Please see the details in [Sending reports via FTP](#)

Specify charset (-CH):

**-chValue** specifies the character set (e.g. **-chRussian**)

This parameter specifies the character set. The following values are predefined now: **ANSI, Arabic, Baltic, Chinese, Easteuropa, Greek, Korean, Japanese, Russian, Taiwanese, Thai, Turkish** and **Vietnamese**.

-----

-

Window sizes (-WNH,-WNW):

**-wnhValue** specifies height of application window (e.g. **-w nh600** or **-w nhMax**)

**-wnwValue** specifies width of application window (e.g. **-w nw 800** or **-w nw Max**)

These parameters specify height and width of application window. **Value** can be the predefined string **max** or any other positive integer number.

-----

-

Decimal point and CSV separators (-UDS,-UCS):

**-udsChar** specifies decimal point separator for decimal values (e.g. **-uds"**)

**-ucsChar** specifies CSV report delimiter (e.g. **-ucs";"**)

By a default **MvPCinfo** uses **."** (point) as decimal point separator and **","** (comma) as a delimiter to create MS Excel's Comma Separated Values reports.

-----

-

Backup existing reports (-IBAK):

**-ibak** forces **MvPCinfo** to save existing reports as .bak files (e.g. **-ibak**)

By a default **MvPCinfo** replaces existing reports. Use this parameter to back them up.

-----

-

Logging the tests (-LOG):

**-log** forces utility to create **c:\mvPClog.txt** file on PC under testing (e.g. **-log**)

Log file contains detailed information about testing and is required firstly for the troubleshooting purposes. See also [Troubleshooting](#) topic.

-----

-

Path to MvPCinfo.ini (-INI):

**-iniDirName** specifies directory where mvPCinfo.ini file to be saved (e.g. **-iniC:\PCinfo\** or **-ini%Temp%**)

**MvPCinfo.ini** file is used by **MvPCinfo** for saving information specific for PC being tested ([Custom Fields](#) values for example). By default this file is saved in system folder. Due to some reasons (e.g. if user doesn't have rights for writing into system folder) it becomes necessary to redirect saving of this file to another directory.

-----

-

Save to Clipboard (-ICB):

**-icb** forces utility to save the report into Clipboard instead of a file (e.g. **-icb**)

-----

-

Show message during hidden testing (-HMES):

**-hmes** specifies message to be displayed during hidden testing (e.g. **-hmes"Please wait..."**)

-----  
 -  
Test remote PC (-GO,-GU,-GP):

-goRemotePC specifies a network name or IP-address of remote machine to be tested (e.g. -go"Server\_NT" or -go"172.17.177.123")  
 -guUser specifies user name to access a remote machine (e.g. -gu"Admin")  
 -gpPassword specifies a password to access a remote machine (e.g. -gp"12345")

RemotePC is a network name or IP address of the machine to be tested. Please see [Remote Machine Testing](#). **Important! Remote Testing works for Site and World versions only.**

-----

-  
Remove executable right after the testing ends (-RMV):

-rmv forces MvPCinfo to clear itself from a disk right after the program stops testing.  
**Important! Removing works for Site and World versions only.**

-----

-  
MvPCinfo process priority (-priLow, -priNormal, -priHigh):

-priLow assigns Low execution priority to MvPCinfo process;  
 -priHigh assigns High execution priority to MvPCinfo process.

## 5.2 Configuration File

Configuration File ([pcinfo.cfg](#)) is a plain text file contrived especially for setting [command line parameters](#) instead of using the batch files.

**Important!** Using this file for setting the parameters instead of using of batch files avoids black DOS window appearing on the workstations during hidden inventory.

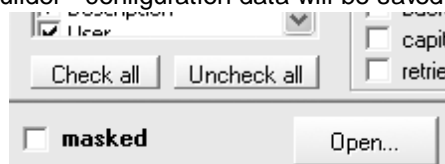
You can use any plain text editor to create a Configuration File manually or use a [Configuration File Builder](#) (mvPCinfoCfg.exe) developed especially for this purpose.

Below is an example of [pcinfo.cfg](#):

```
-onSoft
-s -e1
-d\\SERVER\inventory$\PCinfo\Reports
```

To be effective, Configuration File must be saved strictly with name [pcinfo.cfg](#) and placed near MvPCinfo.exe (into the same folder).

To keep inventory settings secret from network users you can install "masked" check box before saving pcinfo.cfg in Configuration File Builder - configuration data will be saved in scrambled style:



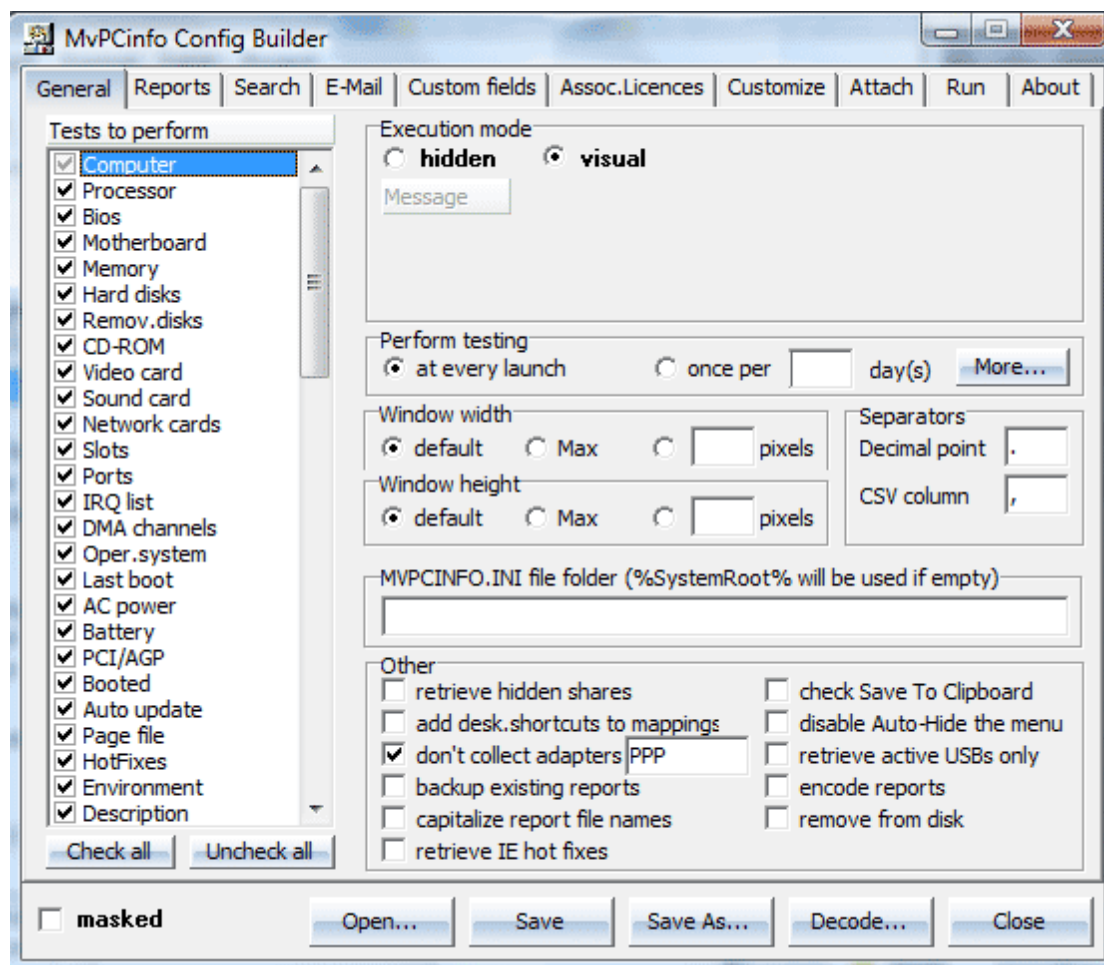
[Site and World license](#) owners have opportunity to attach the configuration block directly to MvPCinfo.exe file.

Other reasons to create Configuration File are to append [Custom Fields](#) to MvPCinfo form and [customize](#)

MvPCinfo view.

## 5.3 Configuration File Builder

This program ([mvPCinfoCfg.exe](#)) allows you to create and modify of MvPCinfo's [Configuration File](#) in handy and clear form. Please don't forget to save required configuration as pcinfo.cfg file in the same directory where MvPCinfo.exe application is placed.



Special version of Configuration File Builder provided with [Site and World license](#) packages has some additional features:

1) it allows operating with MvPCinfo configuration block [attached directly to MvPCinfo.exe](#) file. MvPCinfo application finds and uses attached configuration instead of pcinfo.cfg file placed in the same folder. This makes your inventory settings more secret from network users. To save (attach) required configuration to MvPCinfo.exe use please Application files (\*.EXE) filter in Save (Save As) dialog.

2) it contains Decode button to decode MvPCinfo report(s) created with Encode Reports flag switched on...

## 5.4 Custom Fields

Custom Fields were contrived especially to include additional information into report. Generally these fields contain information specific for every PC, which couldn't be retrieved by MvPCinfo: floor, room, phone numbers and so on. List of custom fields must be specified in Custom section of MvPCinfo's [Configuration File](#) (pcinfo.cfg). To set custom fields values you'll need to run MvPCinfo in visual mode and type in or edit them on every machine. Once entered these fields will be stored on the tested computer and will be filled automatically every time you'll run MvPCinfo in future (visually or hidden). You may include these values into reports while checking Custom check box on Report page.

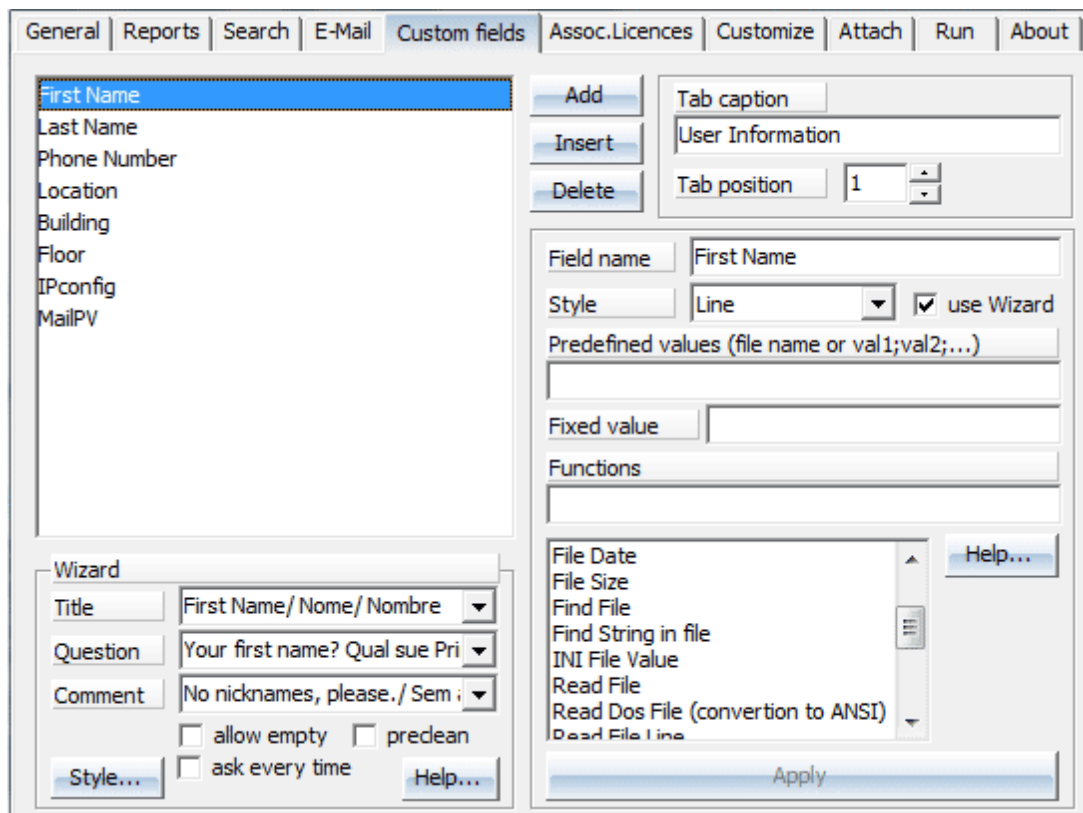
Below is an example of a Custom section:

```
[Custom]
caption=My caption
position=1
field=Inventory tag
field=Manufacturer:(manufact.txt)
field=Station type:(Tower;MidiTower;MiniTower;Desktop;Notebook)
field=Service phone
field=User profile folder:(%userprofile%)
field=Docs Size:(dirSize(c:\Documents and Settings))
field=File Size:(fileSize(c:\pagefile.sys))
field=File Date:(fileDate(c:\windows\win.ini))
field=WININI value:(readValue(c:\windows\win.ini,Trace Route,Path))
field=BIOS date:(HKEY_LOCAL_MACHINE\SYSTEM\CurrentControlSet\Control\Biosinfo,SystemBiosDate)
field=Location:=12345 Auralia Rd, North Miami, FL 34567, USA
field=WMI data:(wmiValue(win32_processor,description))
```

If MvPCinfo finds [Custom](#) section in pcinfo.cfg - it creates a new page with a list of Custom Fields. [Position](#) keyword determines tab position within a row of MvPCinfo's tabs. Its value changes from 1 to 16. [Caption](#) keyword sets the name you'll see on that tab.

[Configuration File Builder](#) allows you to specify custom fields list in easy way. Also it allows you to provide any custom field with [Custom Fields Wizard Dialog](#) to ask user for the data during its machine testing.





MvPCinfo allows you to set a list of predefined values using one from extended field declarations:  
`field=FieldName:(Value1;Value2;...;ValueN)` or  
`field=FieldName:(FileName)`

where FileName is a plain text file placed in MvPCinfo's directory (one value per line).

Also MvPCinfo allows using a few functions to calculate field's values:

`field=FieldName:(fileSize(FileName))` - calculates size of specified file

`field=FieldName:(fileDate(FileName))` - retrieves date of specified file

`field=FieldName:(dirSize(DirName))` - calculates size of specified directory

MvPCinfo can retrieve values from Registry, DOS environment and WMI:

`field=FieldName:(HKEY,VALUE)`

`field=FieldName:(%EnvVar%)`

`field=FieldName:(wmiValue(win32_Class,Property))`

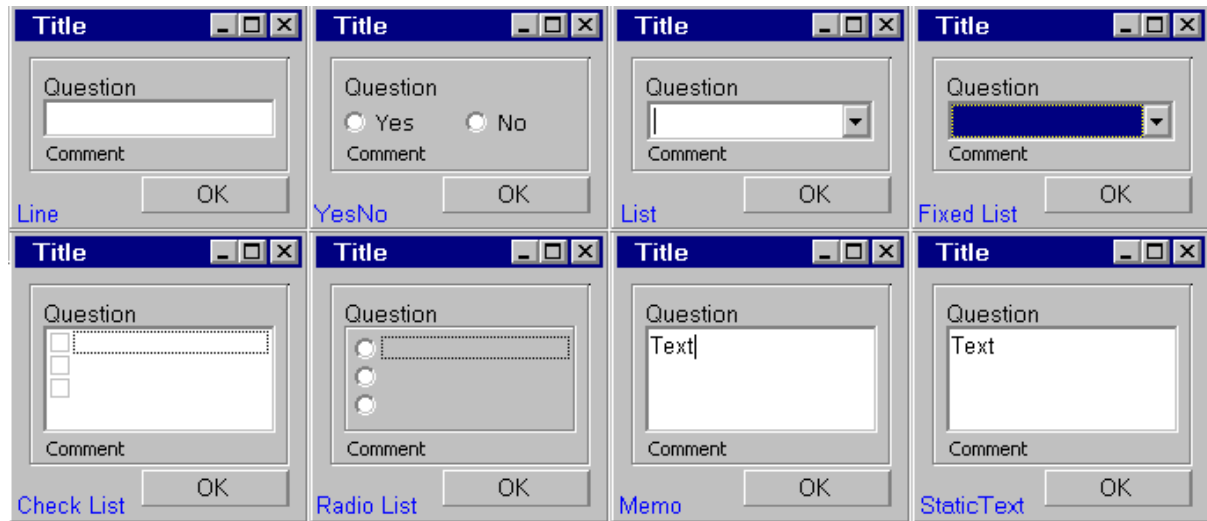
You can specify fixed value for custom fields (this could be useful for example if you are collecting reports about PCs from different locations):

`field=FieldName:=FixedValue`

## 5.5 Custom Fields Wizard Dialog

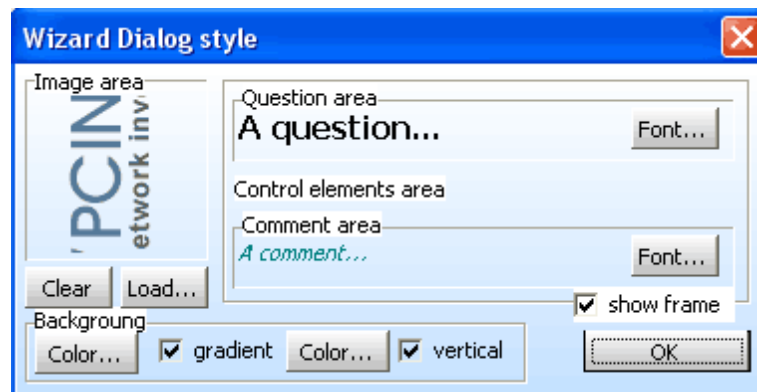
Any [Custom Field](#) can be provided with Wizard Dialog to be filled by user during hidden or visual testing. Please use [Configuration File Builder](#) to apply the dialogs to Custom Fields - on the Custom Fields page select please any field in the list, check up "Use Wizard" box and then choose required Wizard Dialog parameters: **Title** (ex. Question 1 of 3), **Question** (ex. Please enter your Lastname) and **Comment** (ex.

Type N/A if don't know).



If you do not check "Allow empty" check box - dialog will not close while Line is empty or any List item isn't selected. If you do not check "Ask every time" - Wizard Dialog will appear only one time.

Additionally you can customize the Wizard Dialog: by changing background color, selecting desired fonts for Question and Comment fields, and you may wish to specify an image to be shown on the left...



Please use [Configuration File Builder](#): you'll find the "Style..." button on Custom Fields page at the bottom of Wizard group.

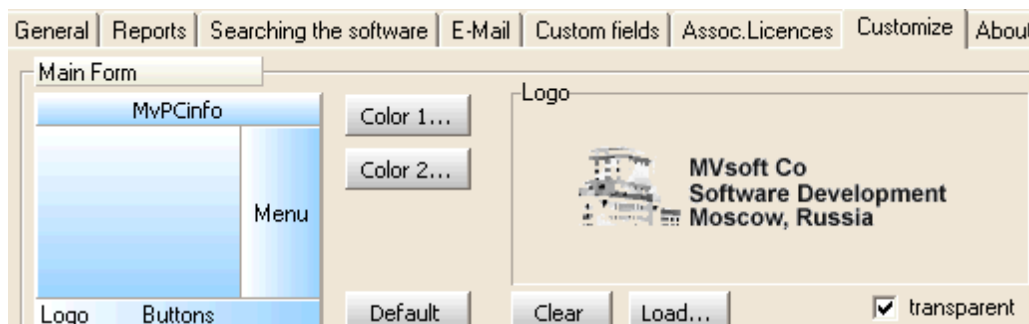
## 5.6 Customize program view

MvPCinfo allows you to customize view of program's main window as well as a view of message window that is visible while hidden testing. Please use [Configuration File Builder](#) (MvPCinfoCfg.exe) or specific command line parameters to change default view settings.

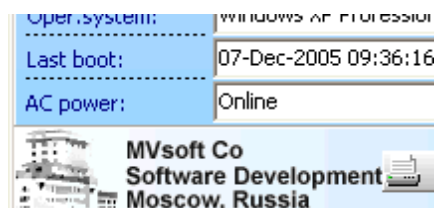
You can customize MvPCinfo's Main Window in 2 ways:

- \* you can change default window colors;
- \* you can place a personal image to bottom-right corner.

In [Configuration File Builder](#), switch to Customize page and specify desired colors and image as in example below:



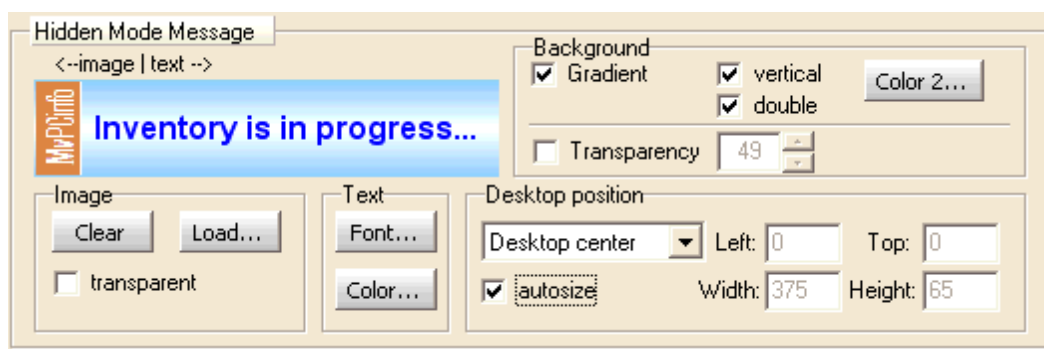
Here you can see how Main Window will change:



Also you can customize a view of Hidden Mode Message that is visible while hidden testing:

- \* you can change window transparency, colors and font;
- \* you can place a personal image on the left;
- \* you can change window size and placement.

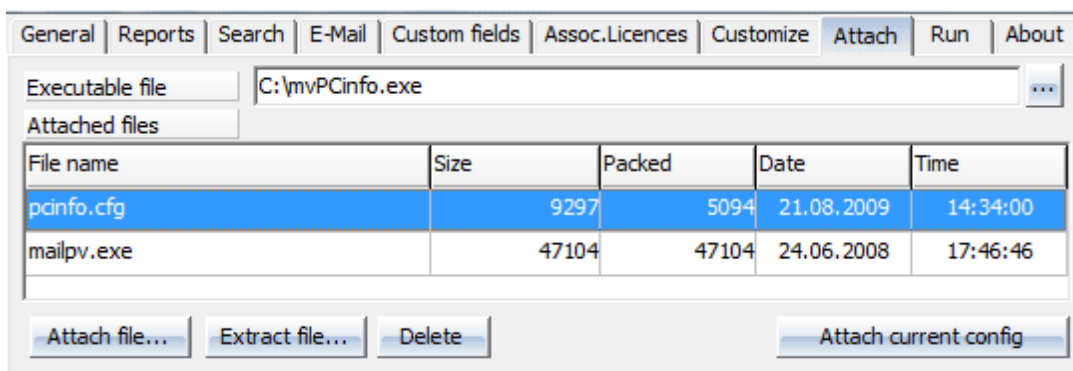
In [Configuration File Builder](#), switch to Customize page and specify desired settings as in example below:



## 5.7 Attaching files to executable

[Configuration File Builder](#) (MvPCinfoCfg.exe) allows owners of [Site and World license](#) packages apply feature of attaching files to executable. Sometimes it is a good idea to combine all required files to deliver them as one file thru LAN or internet to client machine. Attaching configuration file (pcinfo.cfg) to MvPCinfo.exe hides inventory settings from a client.

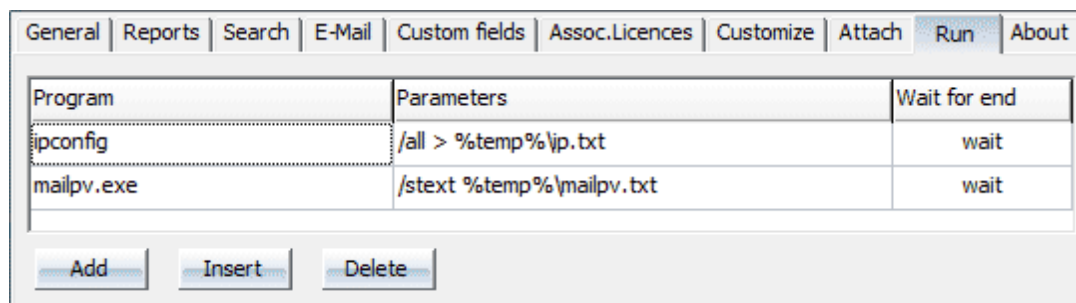
You can also attach third party executables to be [run from within MvPCinfo](#).



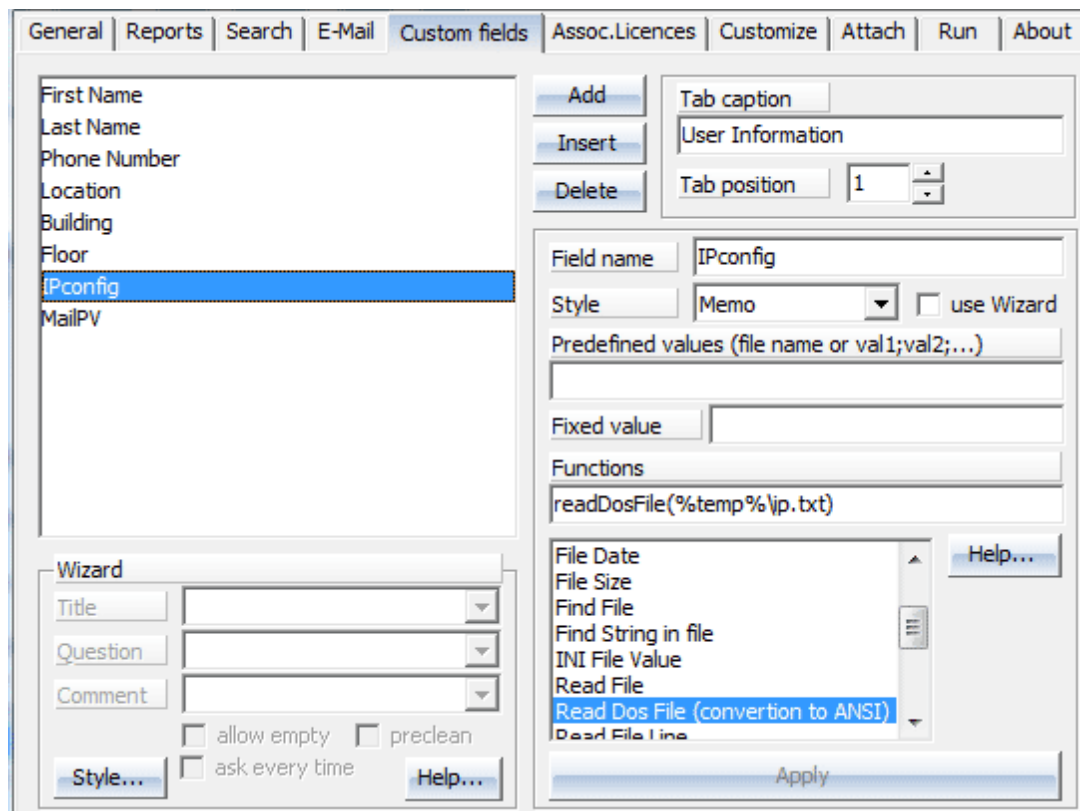
## 5.8 Running other programs from within MvPCinfo

MvPCinfo allows you to specify other applications or batch files to be started together with MvPCinfo. If such application generates output file - this file can be retrieved by MvPCinfo and data from it can be included into report by means of [Custom Fields](#) feature.

For example, if you would like system ipconfig utility report to be included into MvPCinfo's report you need in [Configuration File Builder](#) switch to Run page; click Add button to add line to table; type in ipconfig into Program cell; specify command line parameters that force ipconfig to start hidden and save report into ip.txt file (/all > %temp%\ip.txt); and finally specify wait to delay MvPCinfo until ipconfig will stop:



Then on Custom Fields page you will need to create and specify field as on screen shot below:



Being started MvPCinfo retrieves [configuration file](#) and tries to execute sequentially all commands that were specified on Run page. Note - [configuration file](#) (pcinfo.cfg) and executables can be [attached directly to MvPCinfo.exe](#) file.

## 6 Reporting

### 6.1 Report templates

Basically MvPCinfo allows you to save data in TXT, CVS or HTM files with fixed predefined structure. Using report templates you get the opportunity to create info files of any desired content. The main idea is that you create a template file using a set of predefined keywords which are replaced with realistic values when the report is created.

To use templates you need to run MvPCinfo with **-RT** command line parameter. Templates could be prepared with any extension you want. Report files will be created with this extension. Saving reports with templates is available in both hidden and visual running modes.

Below you can see a list of available keywords:

#CompName, #CompOrg, #CompManuf, #CompModel, #CompChasis, #CompServTag, #CompAssetTag, #CompType, #CompRole  
 #ProcType, #ProcQuan, #ProcFreq, #ProcL1, #ProcL2, #ProcFam, #ProcMod, #ProcStep, #ProcSocket, #ProcClock, #ProcID, #ProcSerial, #ProcCores, #ProcThreads, #ProcArch  
 #BiosName, #BiosDate  
 #MotherBoard, #MBserial  
 #Memory, #MemoryKB, #MemorySlots  
 #HardTotal, #HardTotalMB, #HardTotalGB  
 #HardFree, #HardFreeMB, #HardFreeGB, #HardFreePr, #HardFreeOnC

```
#HardUsed, #HardUsedMB, #HardUsedGB, #HardUsedPr,
#HardPrimary, #HardPrimSize, #HardPrimSerial
#HardSecondary, #HardSecSize, #HardSecSerial
#HardThird, #HardThirdSize, #HardThirdSerial
#HardFourth, #HardFourthSize, #HardFourthSerial
#CDrom
#Floppy
#VideoName, #VideoMem, #VideoMode
#SoundName
#EmailAddr
#OSname, #OSnm, #OSreg, #OSidkey, #OSinst, #OSvers, #OSbuild, #OSlang, #OSsp, #OSpage, #OSSuites,
#OSupdate, #OSplat, #OSScore, #OSprocScore, #OSmemScore, #OSgrScore, #OSgameScore,
#OSdiskScore, #OSbootMode, #OSSession, new #OSliveID
#LastBoot, #UpTime
#ACPower, #Battery
#Wallpaper
#NetDescr, #NetUser, #NetDomain, #NetWorkGroup
#NetNode, #NetHost, #NetDNSSuffix, #NetDNSservers, #NetWINSproxy, #NetIProuting
#WiFiCon
#Keyboard, #Mouse, #Monitor, #MonitorHz, #MonitorSerial, #Touches
#Country, #CountryCode, #CountryAbbr
#LangLocal, #LangEng, #LangAbbr
#CurrLocal, #CurrInter, #CurrDecs, #CurrSep
#DateFormat, #TimeFormat, #TimeZone, #DVDregion
#Measurement, #Decimals, #DecDivider
#InetConnect, #InetProxy
#Custom1, #Custom2, #Custom3, ...
#CustomName1, #CustomName2, #CustomName3, ...
#DateD, #DateDD, #DateM, #DateMM, #DateMmm, #DateYY, #DateYYYY, #DateH, #DateMN, #DateSS
#MvVers
```

These keywords will be replaced with realistic values everywhere you place them in your template file. But what must be done with such data as software or any other list? Here are the special cycle commands to utilize information from MvPCinfo's lists and tables:

```
#CycleItem - to start report cycle
#EndCycle - to stop report cycle
#CycleIndex - current item index
#CycleTotal - total number of items in last executed cycle.
```

The line or lines enclosed within cycle's start and end keywords are repeated as many times as many items exist in corresponding list or table. Every line is scanned for special keywords and filled up with real data. Below you can see detailed info about all cycle items:

| Start cycle      | Available keywords   |
|------------------|--|
| #CycleCDs        | #CDtype, #CDname   |
| #CycleHDDs       | #HDname, #HDTitle, #HDSys, #HDSize, #HDFree, #HDFreePr   |
| #CycleSmart      | #SmModel, #SmSizeGb, #SmSernum, #SmFirmWare, #SmlntfSup, #SmlntfEn, #SmModeSup, #SmModeEn, #SmTemperature, #SmOnOffCount, #SmTotalHours, #SmStatus |
| #CyclePrFeats    | #FeatureName   |
| #CycleSlots      | #SlotName  |
| #CyclePorts      | #PortName  |
| #CyclePCIdevs    | #PCclass, #PCdevice, #PCivendor, #PCsubsystem, #PCsubvendor, #PCirq  |
| #CycleIRQs       | #IrqName   |
| #CycleDMAs       | #DmaName   |
| #CycleHots       | #FixName   |
| #CycleNetCards   | #CardName, #IPaddr, #MACaddr, #Subnet, #Gateway, #Adapter, #DHCPserver, #PrimWins, #SecWins  |
| #CycleVideoCards | #VideoName, #VideoMem, #VideoMode  |

```

#CycleIPs      #IPAddr
#CycleMACs     #MACAddr
#CycleSubs     #Subnet
#CycleGates    #Gateway
#CycleAdapters #Adapter
#CycleDHCPser  #DHCPserver
vs
#CyclePrimWins #PrimWins
#CycleSecWins  #SecWins
#CycleNetProts #ProtName
#CycleNetClient #NetClient
#CycleNetServs #NetService
#CycleTCPs     #LocIP,#LocHost,#RemIP,#RemHost,#ConnState
#CycleUDPs     #LocIP,#Port
#CycleARP      #Adapter,#RemMAC,#RemIP,#Type
#CycleRoute    #DestIP,#Mask,#NextHop,#IFindex,#Type,#Proto,#Metric
#CycleHosts    #Host
#CycleWiFi     #SSID,#Qual,#Alg1,#Alg2
#CycleBrowsers #BrowserName
#CycleMailers  #MailerName
#CycleShares   #ShareName, #SharePath
#CycleMaps     #MapName, #MapPath
#CycleActTCPs  #LocIP,#LocHost,#RemIP,#RemHost,#State
#CycleMouses   #MouseName
#CycleModems   #ModemName
#CycleMonitors #MonName,#MonHz,#MonSerial
#CyclePrinters #PrName,#PrLocRem,#PrPort,#PrDrv,#PrDef
#CycleEnvs     #EnvKey,#EnvValue
#CycleFonts    #FontName,#FontFile
#CycleInfras   #InfraName
#CycleScans    #ScanName
#CycleTapes    #TapeName
#CycleSCSIs    #ScsiName
#CyclePCMCIA   #PcmciaName
#CycleUSBs     #UsbName
#CycleProblems #ProblemName
#CycleOther    #OtherLine
#CycleStartPag #StartPage
es
#CycleVisits   #VisitName, #VisitHits, #VisitLast
#CycleBhos     #BhoName, #BhoPublisher, #BhoVers, #BhoSize, #BhoDate, #BhoPath
#CycleAutoRun  #RunName,#RunFrom,#RunPath
#CycleTasks    #TaskName, #TaskLoc, #TaskStatus, #TaskNext, #TaskLast, #TaskSched
#CycleProc     #ProcName, #ProcPublisher, #ProcVers, #ProcSize, #ProcDate, #ProcCPU, #ProcMem, #ProcPath
#CycleServ     #ServName, #ServPublisher, #ServVers, #ServSize, #ServDate, #ServStart, #ServStatus, #ServPath
#CycleSysLog   #SysLogType, #SysLogDate, #SysLogSource, #SysLogUser, #SysLogDescr
#CycleSecLog   #SecLogType, #SecLogDate, #SecLogSource, #SecLogUser, #SecLogDescr
#CycleAppLog   #AppLogType, #AppLogDate, #AppLogSource, #AppLogUser, #AppLogDescr
#CycleAccounts #AccUser, #AccComment, #AccLogins, #AccLastLogin
#CycleProfiles #ProfileName, #ProfilePath, #ProfileSID
#CycleGroupUs  #GroupName, #GroupUsers
ers
#CycleLic      #LicName, #LicVers, #LicIDnum, #LicIDkey
#CycleAssocLic #AssocLicName, #AssocLicAppl
#CycleAddRem   #AddRemName, #AddRemPublisher, #AddRemVers, #AddRemSize, #AddRemUninst
#CycleEngines  #EngineName, #EngineVers
#CycleTypedUrl #TypedURL
s
#CycleBHOs     #BhoName, #BhoPublisher, #BhoVers, #BhoSize, #BhoDate, #BhoPath
#CycleFavs     #FavName, #FavPath, #FavUrl

```

```

#CycleDesktop #DeskCaption, #DeskType, #DeskPath
#CycleQuick   #QuickCaption, #QuickPath
#CycleSoft     #SoftName, #SoftPublisher, #SoftVers, #SoftDate, #SoftAccess, #SoftPath, #OSsize, #SoftFile,
               #SoftDrive
#CycleOpenPort#PortNumber, #PortProtocol, #PortState, #PortDescr
s
#CycleCustoms #CustomName, #CustomValue
#CycleFiles   #FileName, #FileSize, #FileDate, #FilePath
#CycleRecentFiles #FileName, #FilePath
es
#CycleRecentPI #DirName, #DirPath
aces
#CycleChanges #ChItem, #ChOld, #ChNew

```

Alternatively you can use **#ItemX** approach to reach items by index (eg. **#CardName1**, **#CDrom2** and so on). **X** is a number from **1** to **9**.

Below is an example of a template file. Don't forget to place -RT parameter info command line or [pcinfo.cfg](#) file to activate saving report files using templates. Try it to see resulting info file.

```

-----
#CompName's computer has #ProcType processor with cpu frequency #ProcFreq MHz.
Below is the list of installed softw are:
#CycleSoft#CycleIndex. #SoftName found on path: #SoftPath
#EndCycle
-----
Softw are runs under environment:
#CycleEnvs#CycleIndex. #EnvKey=#EnvValue
#EndCycle
Report date: #DateYY/#DateMM/#DateDD (#DateHH:#DateMN:#DateSS)
-----


```

## 6.2 Sending reports via E-Mail

MvPCinfo allows sending the reports via e-mail. This feature is very useful when you want to perform inventory of the computers outside of your LAN. Report files are sent as an attachment.

Generally speaking, sending the reports via e-mail is an unreliable operation and it's available now only thru SMTP server or Microsoft MAPI-compatible e-mail provider software installed on tested PC (such MS Outlook, MS Exchange, MS Messaging and so on).



A screenshot of a 'Send report' dialog box. It has a title bar with a close button. The dialog contains several input fields: 'Report type' (Text (\*.txt)), 'Mail From' (idb@mvpcinfo.com), 'Mail To' (mvpcinfo@mvpcinfo.com), 'Subject' (IDB(MVsoft Co). MvPCinfo report (19-Jun-2006)), and 'Text' (hed you'll find a report file created with MvPCinfo utility.). Below these is a 'Send mail via' section with three radio buttons: 'SMTP server' (selected), 'Microsoft MAPI', and 'Try both'. An 'SMTP server' text box contains 'smtp.lan.mvpcinfo.com'. There is an 'Attach files' button and a text box containing 'c:\%USERNAME%.ini' and '%systemroot%\win.ini'. A 'ZIP attachment' checkbox is checked. At the bottom are 'Send' and 'Cancel' buttons.

**Important!** This feature is available in visual mode for all [Licenses](#). To use it in hidden mode you'll have to purchase Site or World License.

If it isn't changed with [command line parameters](#) - MvPCinfo tries first to find default SMTP server to send a report. If this fails - MvPCinfo tries to use MAPI interface to perform report delivery. In the last case a report mail is placed into output queue of a default E-Mail Client of tested PC.

Please use additionally (u=? p=?) notation to specify user name and password if SMTP server requires authorization as in example below:

-mISr"smtp.lan.mvpcinfo.com(u=mvpcinfo p=mv12345)"

MvPCinfo Site and World packages contain an application called [MvRepReceiver.exe](#) - MvPCinfo [Reports Receiver](#). This application is a TCP server and POP3 client that provides concurrent receiving the reports sent by MvPCinfo.

To install automatic sending of the reports - simply include launch of utility into AutoRun menu of tested PC. Use [-E](#) command line parameter to specify how often this operation must be performed.

## 6.3 Sending reports via TCP

MvPCinfo allows sending the reports via TCP connect directly to host machine. This feature is an alternative to saving reports into network shared folder and allows you to:

- \* provide more privacy for data collected during automatic network inventory;
- \* eliminate network traffic - MvPCinfo transmits packed reports thru TCP connect;
- \* establish receiving MvPCinfo reports from outside your LAN...

**Important!** This feature is available for [Site or World license](#) versions only.

MvPCinfo Site and World packages contain an application called [MvRepReceiver.exe](#) - MvPCinfo [Reports Receiver](#). This application is a TCP server and POP3 client that provides concurrent receiving

the reports sent by MvPCinfo.

**Important!** Please tune up your Firewalls and Routers to allow MvPCinfo and MvRepReceiver to communicate thru specified TCP-port.

Please use [Configuration File Builder](#) (MvPCinfoCfg.exe) or `-tcp` command line parameters to adjust MvPCinfo for sending reports via TCP. In Configuration Builder - switch to Reports Tab and specify TCP connection parameters:

The screenshot shows the 'Configuration File Builder' dialog box with the 'Reports' tab selected. The 'Send via TCP' tab is active. The 'Active' checkbox is unchecked. The 'Host' field contains '127.0.0.1', the 'Folder' field is empty, the 'Port' field contains '11112', and the 'Timeout (s)' field contains '100'. There is a checkbox labeled 'don't Save to File if TCP sending is successfu' and a 'Help...' button.

- \* Host - network name or IP-address of a machine where MvRepReceiver runs;
- \* Folder - name of subfolder in [destination folder](#) of Host machine;
- \* Port - TCP port number; 5-digit integer value (default is 11112) - the same value that was specified for MvRepReceiver;
- \* Timeout (s)- TCP connection timeout; integer value that specifies number of seconds allowed to execute report transmitting before the connection will be interrupted by MvPCinfo.

## 6.4 Sending reports via FTP

MvPCinfo allows sending reports via FTP. This approach supposes that machine has established connection to internet or company's intranet.

**Important!** This feature is available for [Site or World license](#) versions only.

Please use [Configuration File Builder](#) (MvPCinfoCfg.exe) or `-ftp` command line parameters to adjust MvPCinfo for sending reports via FTP. In Configuration Builder - switch to Reports Tab and specify FTP connection parameters:

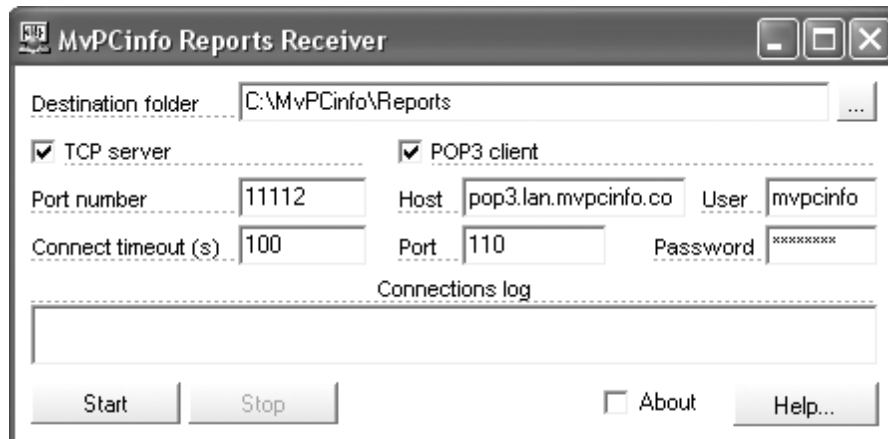
The screenshot shows the 'Configuration File Builder' dialog box with the 'Reports' tab selected. The 'Send via FTP' tab is active. The 'Active' checkbox is checked. The 'Host' field contains 'ftp.mvpcinfo.com', the 'Port' field contains '21', the 'Folder' field contains 'upload', the 'Timeout (s)' field contains '100', the 'User' field contains 'mvuser', and the 'Password' field contains 'mvpassword'.

- \* Host - URL or IP-address of a machine where FTP-server runs;
- \* Port - specifies FTP port number;
- \* Folder - specifies name of directory where report to be uploaded (should have rights for writing);
- \* Timeout (s)- specifies number of seconds allowed to execute report transmission before the connection

will be interrupted by MvPCinfo.

## 6.5 Reports Receiver

This application (MvRepReceiver.exe) is a TCP server and POP3 client that provides concurrent receiving the reports sent by MvPCinfo. It's included into [Site and World license](#) packages.



Following parameters can be specified for TCP server:

- \* local destination folder for saving report files received;
- \* TCP port number - 5-digit integer value (default is 11112) - specific value that is used to install connections between [MvPCinfo](#) and [MvRepReceiver](#);
- \* TCP connection timeout - integer value that specifies number of seconds allowed to execute report transmitting before the connection will be interrupted by [MvRepReceiver](#).

As a POP3 client Receiver checks periodically specified POP3 account and tries to extract reports from emails that contain [mvpcinfo](#) keyword in the subject line. If report is extracted with success and there are no other files attached to that email - MvPCinfo removes that mail from incoming mail queue.

Following parameters can be specified for POP3 client: mail server Host (e.g. pop3.lan.mvpcinfo.com) and Port (e.g. 110); account User and Password.

Run [MvRepReceiver](#) on host machine (e.g. on your LAN server); specify required parameters and click Start button to enable reports receiving.

**Important!** Please tune up your Firewalls and Routers to allow [MvPCinfo](#) and [MvRepReceiver](#) to communicate thru specified TCP-port.

## 7 Automatic easy-to-use network inventory

We can offer you an easy-to-use solution for automatic hidden inventory of whole network: any workstation that connects to the network will be processed automatically

by MvPCinfo.

### Using MvPCinfo for data collecting

To install automatic hidden inventory of your LAN you'll need to:

1) place [mvPCinfo.exe](#) into network server shared folder:

e.g. `\\SERVER\inventory$\PCinfo\mvPCinfo.exe`

2) create a [Configuration File](#) (pcinfo.cfg) and place it into the same folder:

e.g. `\\SERVER\inventory$\PCinfo\pcinfo.cfg`

([Site and World license](#) owners have opportunity to [attach pcinfo.cfg directly](#) to mvPCinfo.exe)

3) include a launch of MvPCinfo into server's [logon script](#) batch file:

e.g. `start \\SERVER\inventory$\PCinfo\mvPCinfo.exe`

Below is an example of simplest configuration file required for automatic hidden inventory:

```
-onSoft  
-s -e1  
-d\\SERVER\inventory$\PCinfo\Reports
```

Here `-s` parameter forces MvPCinfo to run hidden and save TXT report in `\\SERVER\inventory$\PCinfo\Reports` directory specified in `-d` parameter. `-e1` parameter specifies performing inventory once a day.

The [Report Receiver](#) application is available for Site and World license packages - it receives reports from MvPCinfo directly over TCP to avoid the use of shared network folders.

Please see also sending reports to host machine via [E-Mail](#), [TCP](#) or [FTP](#).

### Combining data into database

We've developed a personal database [MvPCBase](#) to collect inventoried data into one database. It allows creating and supporting of a company's computers database in easy-to-use manner. The program may be run in 2 modes:

- \* visual mode (without command line parameters): for visual work with the data;
- \* hidden mode (with `-r` command line parameter): to import MvPCinfo files from directory specified in that parameter.

While working in visual mode you can upload all MvPCinfo reports with one button press. Also you can use any scheduling software to run [MvPCBase](#) in hidden mode to periodically refresh the database.

Additionally [MvPCBase](#) can erase or move just imported files from shared network folder to another (local) one.

## 7.1 What's a logon script

In general, Logon scripts are batch files or executable files that run automatically when a user logs on to a computer running either Windows NT, Windows 9x, or MS-DOS. Logon scripts are often used to configure users' working environments by making network connections and starting applications.

The logon script can be either a batch file (.BAT or .CMD) or an .EXE file. The specified logon script is executed on the client's computer at the time of logon authentication. Examples of logon script commands include the execution of an anti-virus scanning on the client's local hard drive, calling another batch file, and attaching to network resources, as well as any other process specific to the user name that should be executed each time the client logs onto the domain.

Following is a sample batch file that can be used as a logon script:

```
start \\server\inventory$\mvpcinfo.exe

or

\\server\inventory\mvpcinfo.exe

or

net use x: \\server\inventory
x:\mvpcinfo.exe
net use x: /delete
```

Logon scripts are created using any text editor, such as Notepad, and must be saved as unformatted ASCII files.

To assign a user a logon script, designate the path name of the logon script file in the user's account on the server. Then, whenever that user logs on, the logon script is downloaded and run. You can assign a different logon script to each user or create logon scripts for multiple users.

For more information please refer to Microsoft Server NT documentation.

## 7.2 Launcher

**MvPCinfo Launcher** ([mvPCinfoL.exe](#)) is a small (~50K) application created especially to eliminate network traffic during automatic inventory. It is effective if automatic inventory is performed less than once a day (see please -e command line parameter). The idea is to transmit and run this program on network workstation to find out whether or not it is a day requiring the performance of the automatic inventory function. If yes - launcher will run MvPCinfo itself; otherwise it will do nothing (and you'll get minimal traffic loss: ~50K rather than ~900K).

To get the benefit of **MvPCinfo Launcher** - place [mvPCinfoL.exe](#) near the program (in the same folder) and replace calling [mvPCinfo.exe](#) with [mvPCinfoL.exe](#) in your scripts and batch files.

Also Launcher can be configured to run MvPCinfo periodically. It supports 2 Command Line Parameters:  
[-auto\[Hrs\]](#) to force Launcher stay resident and run MvPCinfo thru equal time intervals (e.g. [-auto](#) or [-auto4](#))  
[-withDelay](#) to suspend immediate run of MvPCinfo

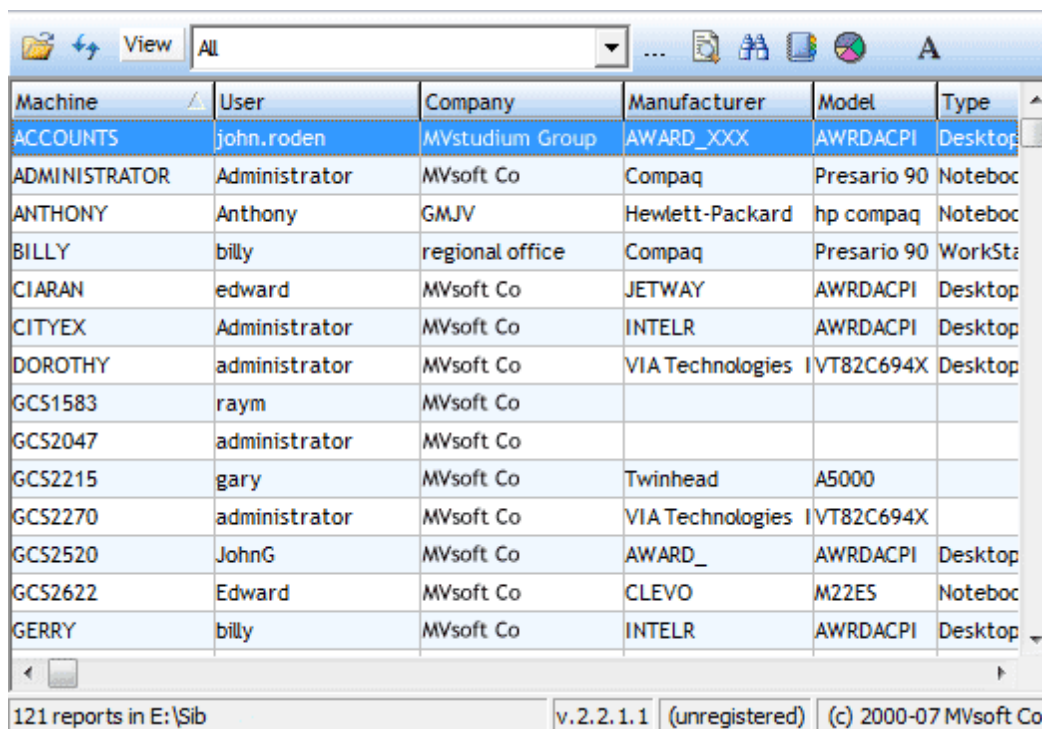
Here [Hrs](#) is a required time interval in hours (default value is 1 hour).

**Important!** Launcher application is included in [Site and World Licenses](#) full version packages.

## 8 How to get Statistics

MvPCinfo creates one or a few report files for every computer that was tested. If you would like to get component or software usage Statistics form all collected reports - please consider following opportunities:

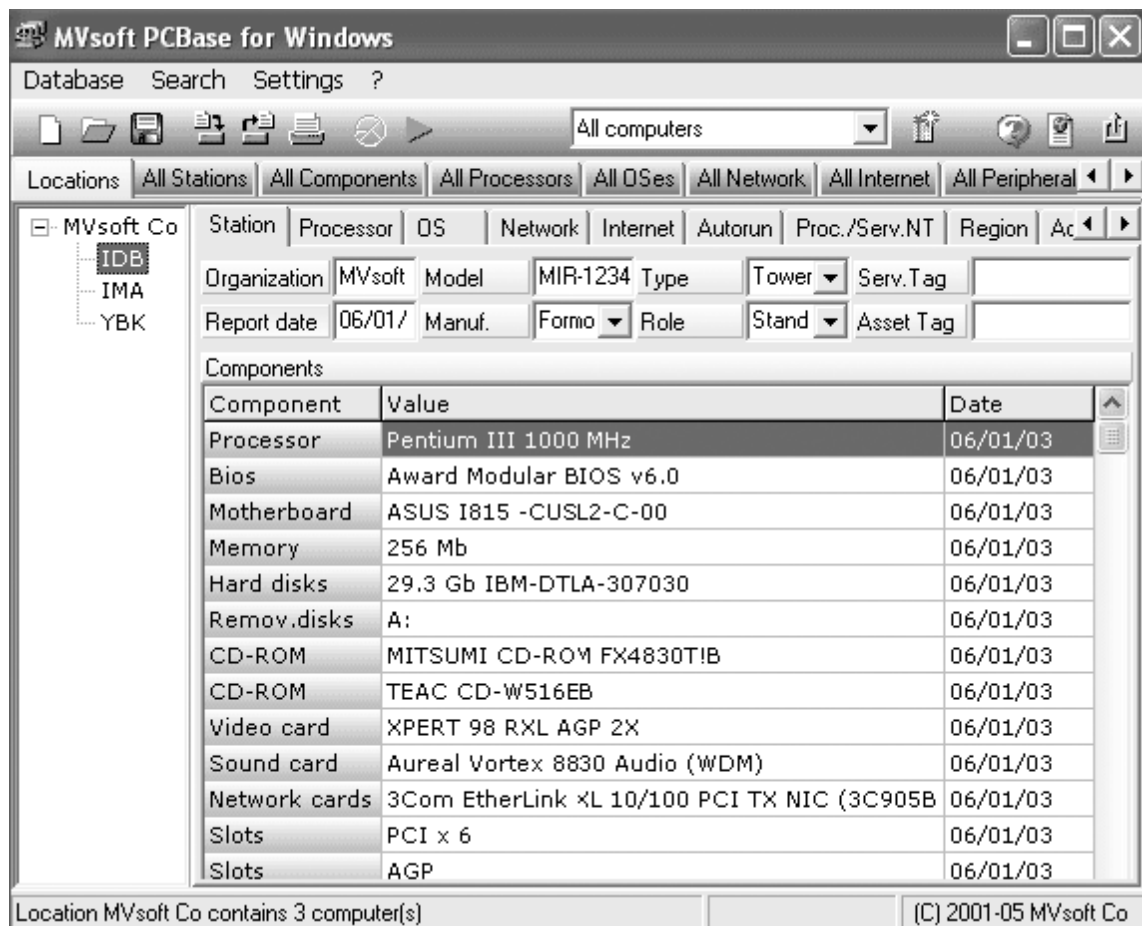
- 1) you can configure MvPCinfo to save reports in CSV format; then export all reports to MS Excel and finally apply all MS Excel's power to manage the data;
- 2) you can use [MvPCview](#) program that allows you to have a view of all data collected, explore components and get statistics. [MvPCview](#) does not contain any database - it simply goes around all the reports to recollect the data:



| Machine       | User          | Company         | Manufacturer     | Model       | Type    |
|---------------|---------------|-----------------|------------------|-------------|---------|
| ACCOUNTS      | john.roden    | MVstudium Group | AWARD_XXX        | AWRDACPI    | Desktop |
| ADMINISTRATOR | Administrator | MVsoft Co       | Compaq           | Presario 90 | Noteboc |
| ANTHONY       | Anthony       | GMJV            | Hewlett-Packard  | hp compaq   | Noteboc |
| BILLY         | billy         | regional office | Compaq           | Presario 90 | WorkSta |
| CIARAN        | edward        | MVsoft Co       | JETWAY           | AWRDACPI    | Desktop |
| CITYEX        | Administrator | MVsoft Co       | INTELR           | AWRDACPI    | Desktop |
| DOROTHY       | administrator | MVsoft Co       | VIA Technologies | VT82C694X   | Desktop |
| GCS1583       | raym          | MVsoft Co       |                  |             |         |
| GCS2047       | administrator | MVsoft Co       |                  |             |         |
| GCS2215       | gary          | MVsoft Co       | Twinhead         | A5000       |         |
| GCS2270       | administrator | MVsoft Co       | VIA Technologies | VT82C694X   |         |
| GCS2520       | JohnG         | MVsoft Co       | AWARD_           | AWRDACPI    | Desktop |
| GCS2622       | Edward        | MVsoft Co       | CLEVO            | M22E5       | Noteboc |
| GERRY         | billy         | MVsoft Co       | INTELR           | AWRDACPI    | Desktop |

121 reports in E:\Sib v.2.2.1.1 (unregistered) (c) 2000-07 MVsoft Co

- 3) you can export collected data into [MvPCbase](#) personal database developed especially for this purpose:



## 9 Troubleshooting

MvPCinfo keeps track of all tests that are performed on user machine. If some test hangs the machine, MvPCinfo skips this test during next 3 starts; then MvPCinfo tries it again. This approach improves program stability and brings better results especially if MvPCinfo works for automatic network inventory.

If the detection process hangs or ends with Application Exception message - please perform the following steps before contacting the developers.

Please include `-log` parameter into command line or into [Configuration File](#)(pcinfo.cfg) you have currently in-use and run MvPCinfo again. Program will create `c:\mvPClog.txt` file containing the log of all detecting steps. You can examine this file to find a test that brings an exception. Also you can use `-logDirFolderName` parameter (e.g. `-logDir"\\server\inventory$logs"`) to redirect the saving log files to another folder.

If a bad test is found please send us `mvPClog.txt` to [pcinfo@mypcinfo.com](mailto:pcinfo@mypcinfo.com) for a study to determine the fault.

Also you can force MvPCinfo by instructing it not to execute this test anymore that machine. To do that please create (or correct) `mvPCinfo.ini` file placed in Windows directory of the machine with a following content:

[Params]

`no=BadTest[ ,BadTest2, ... ]` (e.g. `no=Modem,Net,Shares`)

Now MvPCinfo will skip listed tests every time it will run on that PC.

## 10 Including MvPCinfo into your package

[World license](#) owners can use MvPCinfo as a hidden diagnostic tool within their own software packages. Please follow these steps:

1) create a copy of `MvPCinfo.exe` application and rename it if required (e.g. `mytester.exe`);

In [Configuration File Builder](#):

- 2) select [Hidden Execution Mode](#) and check [Remove From Disk](#) flag on General page;
- 3) type in a fixed name for the report file into [File Name](#) field on Reports page (e.g. `myreport`);
- 4) specify the [Output Folder](#) field (e.g. `c:\`);
- 5) select tests to be performed and other specific parameters;
- 6) click [SaveAs...](#) button, change the [File Type](#) filter to [Executable Files](#) item; select a copy of `MvPCinfo.exe` (or your chosen filename, if renamed) and save the newly created configuration there.

This process enables you to obtain a special copy of MvPCinfo program (e.g. `mytester.exe`) with attached configuration file. Being copied on a PC and run, it will test that PC, create specified report file (e.g. `c:\myreport.txt`) and finally remove itself from the tested machine.

## 11 How to buy MvPCinfo

If you would like to purchase a license for MvPCinfo, please start purchase procedure at <http://www.shareit.com/product.html?cart=1&productid=130455&cookies=1&showcart=1>. There you'll find order forms for all the MvPCinfo licenses as well as for the upgrades from one license to another.

During ordering process you will be able to choose appropriate payment method (Credit Card, Check, Wire transfer, Purchase order and so on).

If you have ordered MvPCinfo and would like to review your order information, or if you have questions about ordering, payment, or shipping procedures, please go visit the [Customer Care Center](#).

### 11.1 Licenses and prices

We offer following types of licenses for MvPCinfo product:

[Personal \(#130455\)](#) The [Personal License](#) allows you to use the Software for the sole purposes. You may install a copy of the Software on a computer and freely move the Software from one computer to another, provided that you are the only individual using the Software and only one copy of it runs at any



moment. (Purchase of this license allows [non-concurrent using](#) of the product [on unlimited number of the PCs](#). But to perform inventory of more than one PC you'll need to go around all of them and run utility manually. [You are not allowed to run product from the logon scripts as well as to use it in other automation approaches replacing manual running.](#)

Cost: 25 EUR

[Site \(#136352\)](#) The [Site License](#) allows you to use the Software on [ONE location](#) of a company. This license allows [concurrent using](#) of the product [on unlimited number of the company's computers](#) including running from network server logon script.

Cost: 250 EUR

[World \(#134068\)](#) The [World License](#) allows you to use the Software [on ALL the locations](#) of a company. This license allows [concurrent using](#) of the product [on unlimited number of the company's computers](#) including running from network server logon script. Additionally it allows you to use the software [outside your company locations](#) for your company needs.

Cost: 1500 EUR

[Additional functionality](#) for Site and World license versions:

- \* creating [encoded reports](#);
- \* [attaching](#) encoded [Configuration File](#) directly to executable file (mvPCinfo.exe);
- \* [sending reports via E-Mail](#) in hidden execution mode;
- \* [sending reports via TCP connection](#) directly to host machine;
- \* [including MvPCinfo into own diagnostics package](#)

Also we offer:

[Upgrade from Personal to Site license \(#180435\)](#)

Cost: 225 EUR

[Upgrade from Site to World license \(#180437\)](#)

Cost: 1250 EUR

[Support](#): 2-year [free update](#) for any license

You can find the latest information on licensing and pricing at <http://www.mvpcinfo.com/PCinfo/licenses.htm>.

## 11.2 Update policy

Our company provides MvPCinfo customers with 2-years free update. We publish updates on the regular basis usually twice a year. We deliver updates ourselves by sending update materials directly to email address placed in order. Usually it occurs during a month after the new versions publishing.

If you want to get your free update faster - please send your email request to [support@mvpcinfo.com](mailto:support@mvpcinfo.com).

[Unsuccessful update delivery happens if:](#)

- [your e-mail address was changed](#): please don't forget to inform us ([support@mvpcinfo.com](mailto:support@mvpcinfo.com)) of your email address changing;

- [your local mail server firewall blocks, damages or kills the mails with EXE files enclosed](#): contact

please your network administrator to allow email receiving with [MvPCinfo](#) word in Subject OR provide us with an additional email address (such as [@yahoo.com](#), [@gmail.com](#) or others) so we may perform a simultaneous delivery to each address you supply to us. This is likely to overcome delivery difficulties encountered at some addresses.