

# Wire / Wireless Dual Mode Internet Camera

## IC-3010 / IC-3010Wg Quick Installation Guide

Version 1.0 / 9, 2008



## Multi-Languages QIG in Driver CD

=====

**Český:** Českého průvodce rychlou instalací naleznete na přiloženém CD s ovladači

**Deutsch:** Finden Sie bitte das deutsche QIG beiliegend in der Treiber CD

**Español:** Incluido en el CD el QIG en Español

**Français:** Veuillez trouver l'français QIG ci-joint dans le CD

**Italiano:** Incluso nel CD il QIG in Italiano

**Magyar:** A magyar telepítési útmutató megtalálható a mellékelt CD-n

**Nederlands:** De nederlandse QIG treft u aan op de bijgesloten CD

**Polski:** Skrócona instrukcja instalacji w języku polskim znajduje się na załączonej płycie CD

**Português:** Incluído no CD o QIG em Portugues

**Русский:** Найдите QIG на русском языке на приложенном CD

**Romana:** Cd-ul cuprinde Ghid de instalare rapida in limba romana

**Slovensky:** Anglického sprievodcu rýchlou inštaláciou nájdete na priloženom CD s ovládačmi.

**Türkçe:** Ürün ile beraber gelen CD içinde Türkçe Hızlı Kurulum Kılavuzu'nu bulabilirsiniz



Copyright© by Edimax Technology Co, LTD. all rights reserved. No part of this publication may be reproduced, transmitted, transcribed, stored in a retrieval system, or translated into any language or computer language, in any form or by any means, electronic, mechanical, magnetic, optical, chemical, manual or otherwise, without the prior written permission of this Company.

This company makes no representations or warranties, either expressed or implied, with respect to the contents hereof and specifically disclaims any warranties, merchantability or fitness for any particular purpose. Any software described in this manual is sold or licensed "as is". Should the programs prove defective following their purchase, the buyer (and not this company, its distributor, or its dealer) assumes the entire cost of all necessary servicing, repair, and any incidental or consequential damages resulting from any defect in the software. Further, this company reserves the right to revise this publication and to make changes from time to time in the contents hereof without obligation to notify any person of such revision or changes.

The product you have purchased and the setup screen may appear slightly different from those shown in this QIG. For more detailed information about this product, please refer to the User's Manual on the CD-ROM. The software and specifications could be subjected to change without notice. Please visit our web site [www.edimax.com](http://www.edimax.com) for the update. All right reserved including all brand and product names mentioned in this manual are trademarks and/or registered trademarks of their respective holders .

### Linux Open Source Code

Certain Edimax products include software code developed by third parties, including software code subject to the GNU General Public License ("GPL") or GNU Lesser General Public License ("LGPL"). Please see the **GNU** ([www.gnu.org](http://www.gnu.org)) and **LPGL** ([www.gnu.org](http://www.gnu.org)) Websites to view the terms of each license.

The GPL Code and LGPL Code used in Edimax products are distributed without any warranty and are subject to the copyrights of their authors. For details, see the GPL Code and LGPL Code licenses. You can download the firmware-files at <http://www.edimax.com> under "Download" page.

## **Index**

<b>1.</b>	<b>Product Information .....</b>	<b>4</b>
<b>2.</b>	<b>Check your package contents .....</b>	<b>6</b>
<b>3.</b>	<b>System Requirement .....</b>	<b>6</b>
<b>4.</b>	<b>Hardware Installation.....</b>	<b>7</b>
<b>4.1.</b>	<b>LED and Focusing .....</b>	<b>7</b>
<b>4.2.</b>	<b>Installation Procedure .....</b>	<b>9</b>
<b>4.3.</b>	<b>Locate the IP Address .....</b>	<b>9</b>
<b>5.</b>	<b>Web Management Interface .....</b>	<b>13</b>
<b>6.</b>	<b>Software Installation .....</b>	<b>16</b>
<b>7.</b>	<b>Firmware Upgrade .....</b>	<b>23</b>

## **1. Product Information**

Thank you for purchasing this Network IP camera! This IP camera is an ideal product for all kinds of video-surveillance purposes, like home/office safety, kid/pet monitoring, and remote video acquire etc. Unlike conventional close-circuit video camera, you're not limited to the length of cable! Once this IP camera is connected to Internet, you can receive video from anywhere in the world where Internet access is available.

If you have problem installing a new cable from the place the camera is installed to your monitoring computer, don't worry! This IP camera also supports wireless network, that is, you can link to this camera wirelessly! You only have to provide this IP camera with 12V power by the power adapter that comes with the product package, and you don't have to set a new network cable between the IP camera and monitoring computer.

Worry about the content will be intercepted by unauthorized person when the video is transmitted over the air? That's also not a problem! Unlike conventional analog wireless camera, which video will be intercepted by anyone who got a compatible video receiver, this IP camera supports data encryption (WEP & WPA / WPA2 / WPA None), which will provide ultimate data security level. All video transmitted over the air is encrypted; therefore no one will be able to get the video captured by the IP camera, except yourself.

You can discover more useful functions in next section!

## Key features

- + No pre-loaded software required - all you need is a browser like Internet Explorer 6 with SP2 (and above, with plug-in installed).
- + Supports VGA (640 x 480), QVGA (320 x 240), and QQVGA (160 x 120) video resolution.
- + Supports 2-way audio transmission, with speaker output and built-in microphone.
- + Anti-flicker function (eliminates flash caused by fluorescent lights, 50 / 60Hz selectable).
- + Supports two video compression format (MJPEG and MPEG4).
- + Wired and wireless network (802.11b / 802.11g) support, supports up to 100Mbps for wired network and 54Mbps for wireless network.
- + Wireless data encryption (WEP / WPA / WPA2 / WPANone)
- + Supports DHCP and PPPoE protocol, you can also assign a fixed IP address to the camera also.
- + Supports Dynamic DNS (used to allocate the IP camera's Internet address, when the ISP you're using does not assign you with a fixed Internet address).
- + Supports UPnP, Windows XP (and above) will discover this IP camera in network neighbor automatically.
- + Send captured picture by Email or FTP when motion is detected.
- + Configurable motion detection sensitivity
- + Upgradeable firmware - enjoy new functions without buying a new camera!
- + Supports up to 4 users, and you can set different password to different user.
- + Usage and event logging.

## **2. Check your package contents**

- One Internet Camera
- One Power Adapter
- One Camera Stand
- One 100M Category 5 Ethernet Cable
- One Quick Installation Guide
- One CD ((Including Manual/Utility/multi-languages QIG)
- One Antenna(IC-3010Wg only)

If any of the above items are missing, please contact your supplier.

## **3. System Requirement**

System requirement for PC, MAC or Notebook PC to access the Internet Camera as following:

- Computer Operating System: Windows 98, ME, 2000, XP + SP2, Server 2003
- CPU: Intel Pentium III 750MHz above or Intel Celeron 1GHz above
- Memory Size: 128MB (256MB recommended)
- VGA Card Resolution: 800 x 600 or above

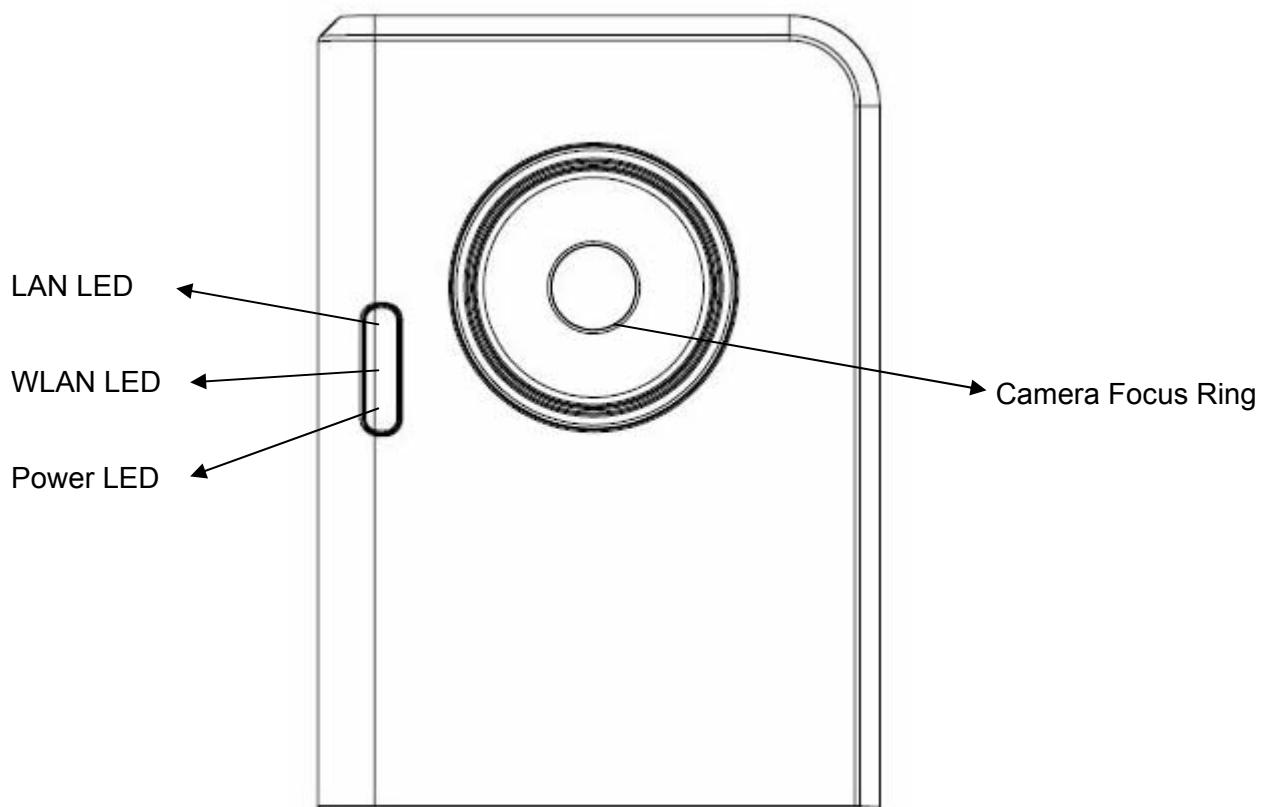
## 4. Hardware Installation

### 4.1. LED and Focusing

The Camera head and its focus ring allow you to modify the aim and focus of the Camera. To adjust the Camera's focus, rotate the dark focus ring.

There are three LEDs indicating the camera status and networking status.

LED name	Status	Description
<b>LAN</b>	Off	Network cable is disconnected
	On	Network cable is connected
	Flash	Transferring data via LAN port
<b>WLAN</b> (IC-3010Wg only)	Off	No wireless LAN activity
	On	Transferring data via wireless LAN
<b>Power</b>	Off	Camera is not powered (camera off)
	On	Camera is correctly powered (camera on)





## Camera Ports

The Camera features two ports and a Reset button.

- **Antenna**

It has one standard reverse SMA connector where any antennas with reverse SMA connector can connect to the Internet Camera.

- **Power**

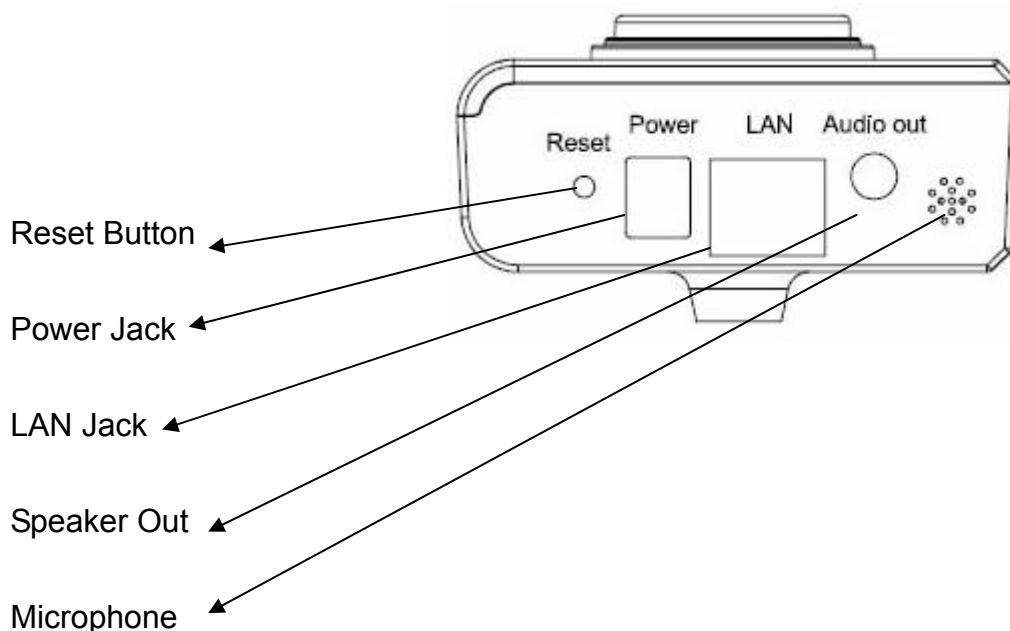
The Power port is where you can connect the power adapter.

- **LAN**

The LAN port is where you can connect the Ethernet network cable.

- **WPS/Reset**

Reset the camera to factory default settings (clear all settings) or start WPS function. Press this button and hold for 20 seconds to clear all settings, and press this button for less than 5 seconds to start WPS function.



## 4.2. Installation Procedure

1. Unpack the Internet Camera package and verify that all the items listed in the Chapter 1 are provided.
2. Connect the Internet Camera to your network by attached the network cable from the switch/router to the LAN port of the Internet Camera.
3. Connect the power adapter to the Internet Camera and plug the power adapter to power outlet. The Internet Camera will be powered on. When the Internet Camera is ready, the Ready LED will light.

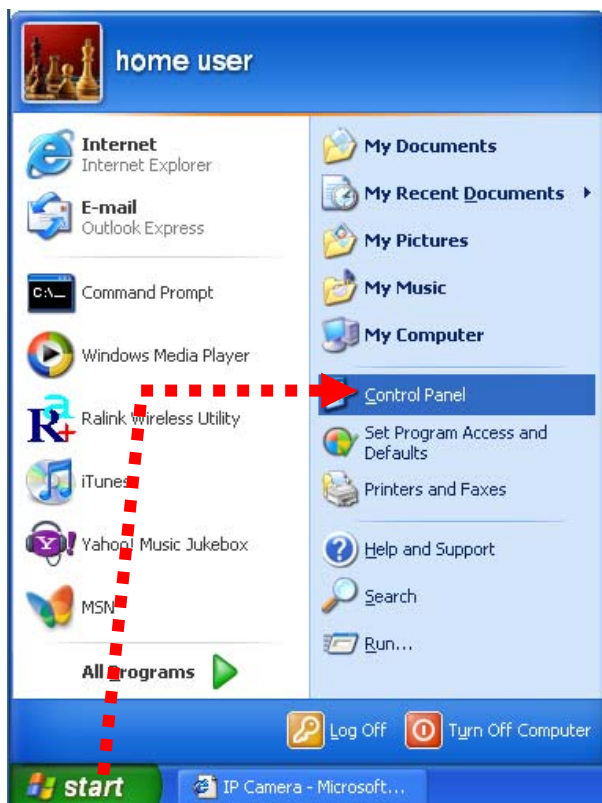
**Note:** It is highly recommended to use the power adapter shipped with the Internet Camera, do NOT use any other power adapter from any sources.

## 4.3. Locate the IP Address

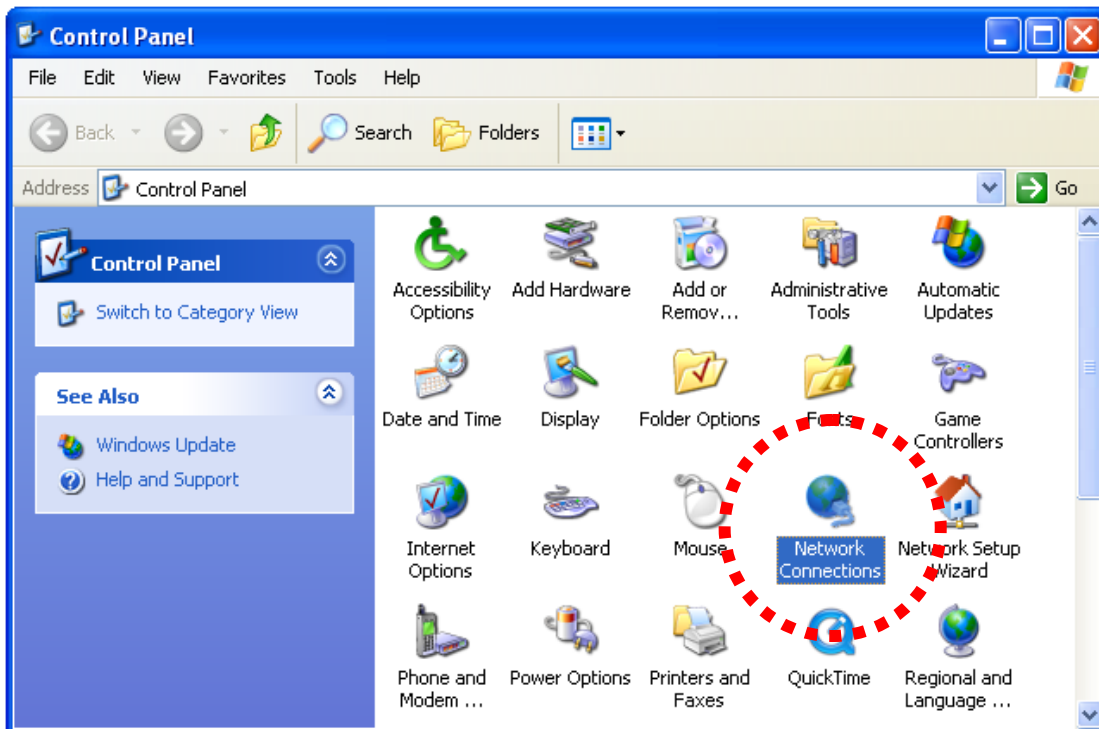
Default IP address of this IP camera is 192.168.2.3. If you wish to assign another IP address to this IP camera, you have to log onto the web configuration interface of the camera first.

If the left three fields of the IP address of your computer is not 192.168.2.XXX , you'll have to change the IP address of your computer first:

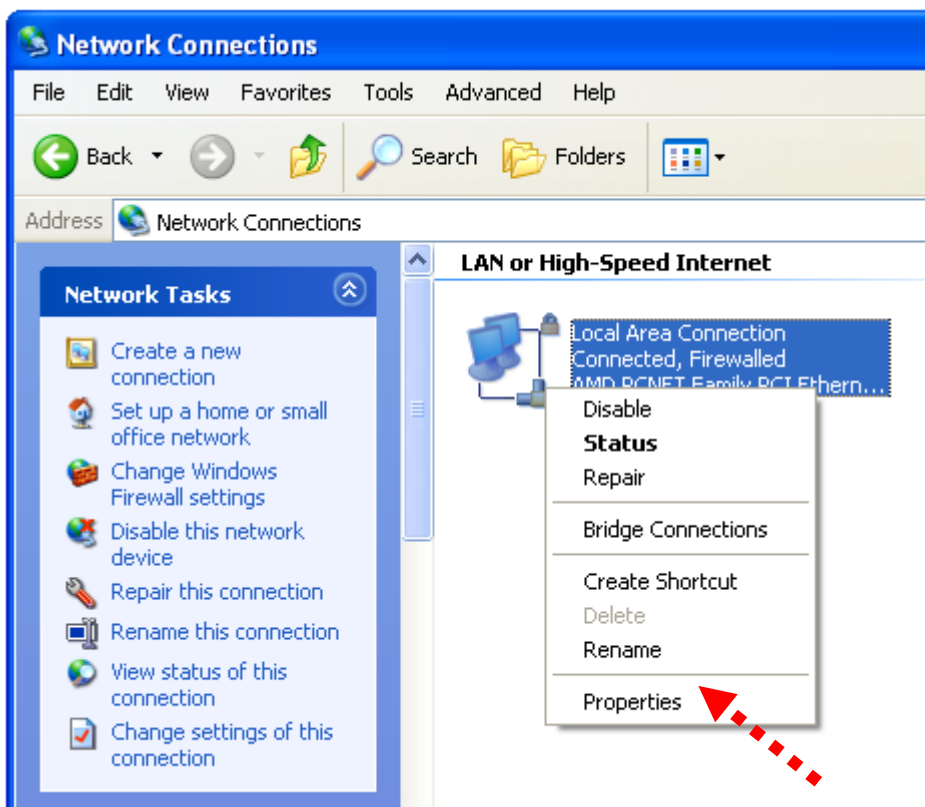
1. Click 'Start' -> 'Control Panel'



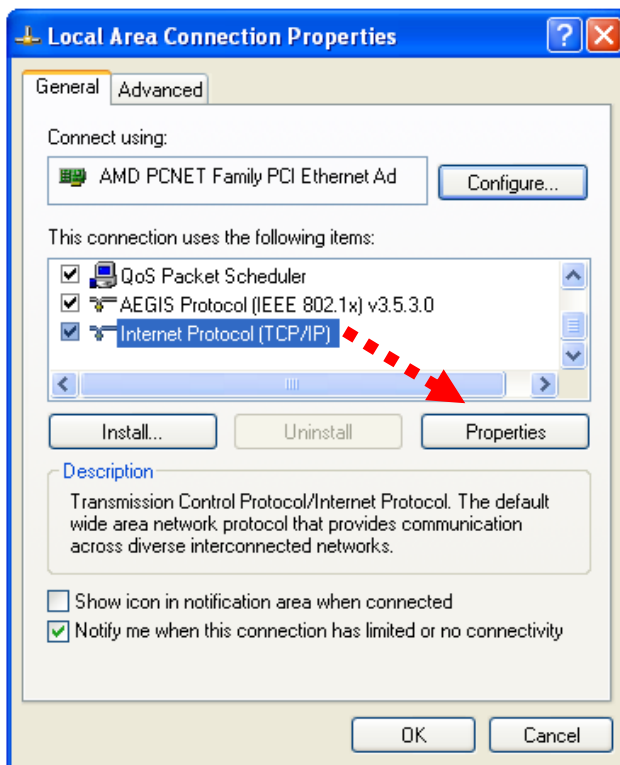
2. Double-click 'Network Connections' icon.



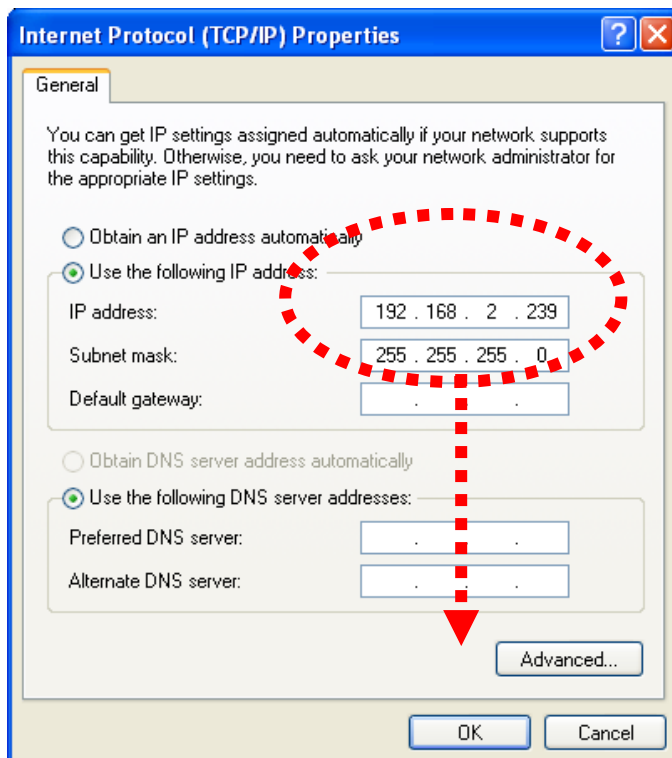
3. Right-click 'Local Area Connection', and click 'Properties'.



4. Select 'Internet Protocol (TCP/IP)', then click 'Properties'.



5. In 'IP address' field, please fill in any IP address begins with '192.168.2', and ends with a value greater than 2 and less than 254 (You can use the example in the picture '192.168.2.239'). In Subnet mask field, please fill '255.255.255.0'. Please keep all other fields empty, and click 'OK'.

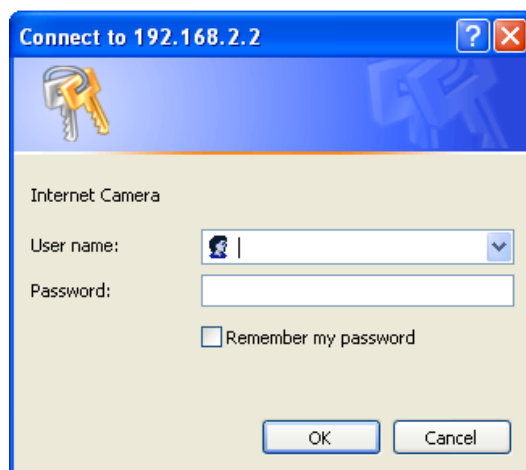


If you changed the IP address of this IP camera and you forget it, there're 2 methods to recover it:

- a. Press and hold the 'Reset' button located at the bottom of this IP camera, to clear all settings of the IP camera and reset the IP address back to 192.168.2.3. You'll lose all settings in the IP camera.
- b. Ask network administrator to check the DHCP release table, if the camera was set to obtain the IP address by DHCP, a new record will be added to DHCP release table on DHCP server when the IP camera is connected to the local area network

## 5. Web Management Interface

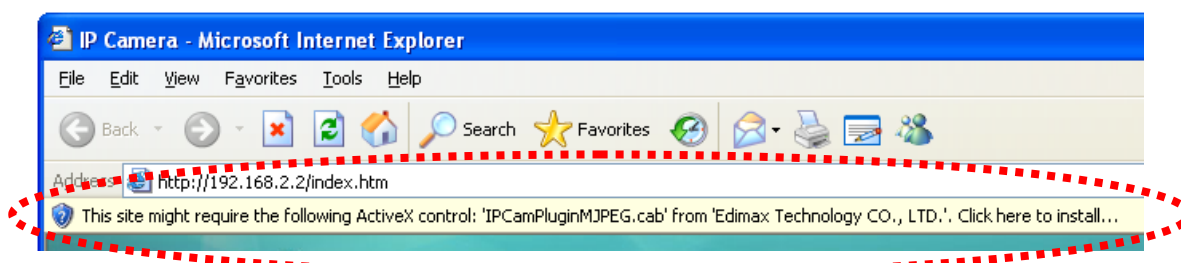
Make sure the IP camera is correctly powered (Power LED is on), and then launch Internet Explorer and type the IP address of the IP camera in address bar of Internet Explorer. You should be prompted to input the user name and password:



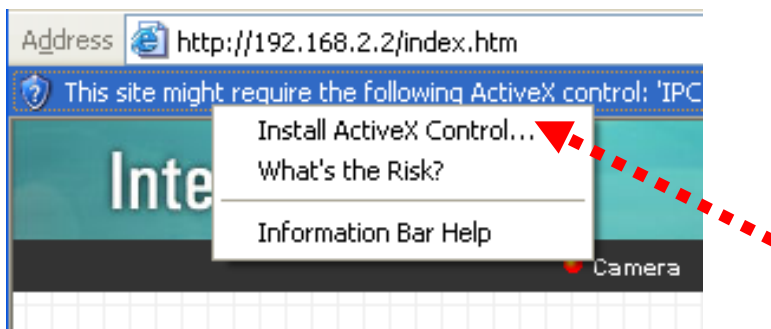
Default user name is 'admin' (in lower case) and password is '1234'. Click 'OK' to continue after user name and password has entered.

If you're rejected, maybe the password has been modified previously. This should not happen if this is a newly-purchased camera, however, if you get the camera from someone else, the password would be changed. Please try to obtain the correct user name / password, or you'll have to reset the camera.

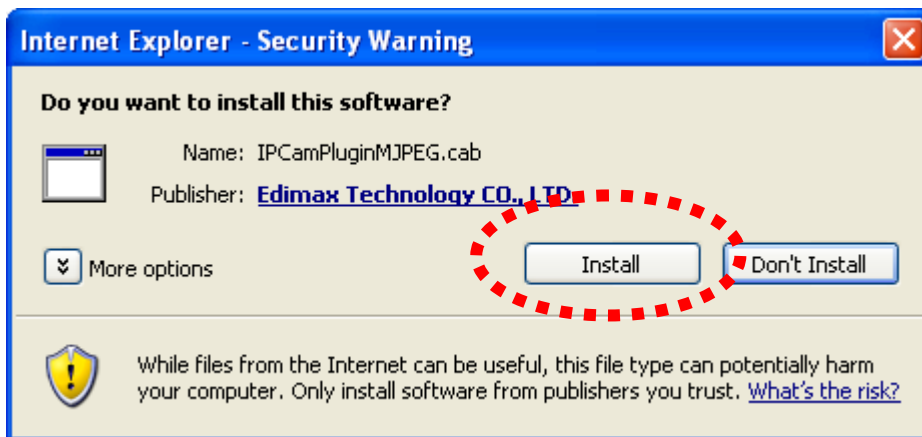
After logged on, you should see the following messages at the top of Internet Explorer:



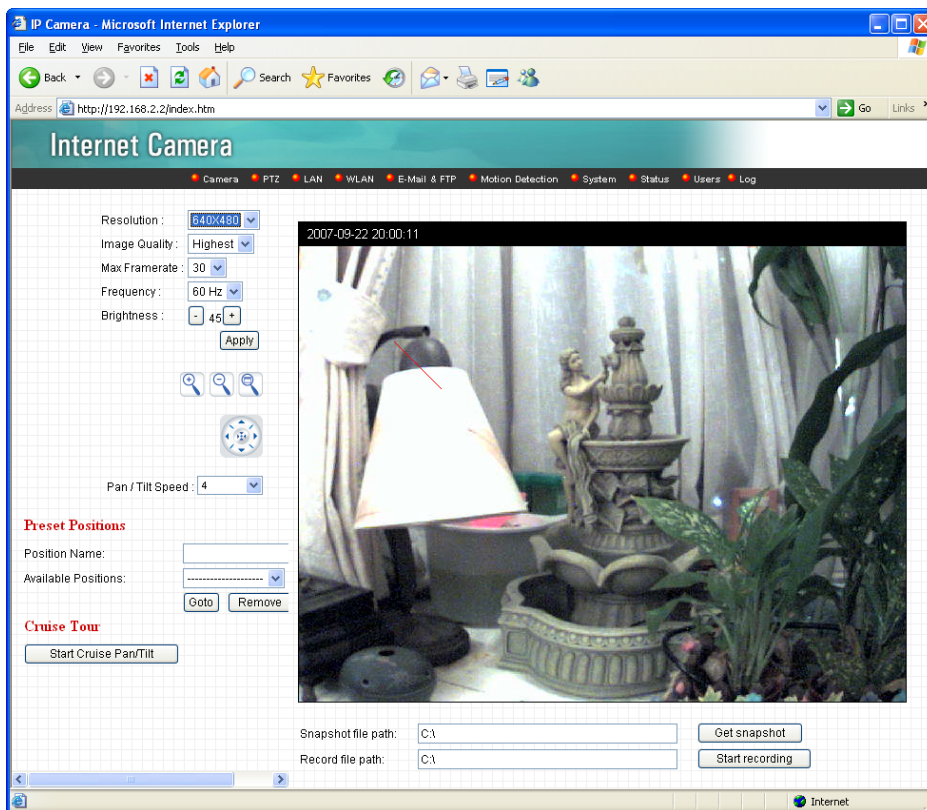
This IP camera requires a special ActiveX control (A.K.A. 'Plugin') to work. Please click on the message, and select 'Install ActiveX Control...':



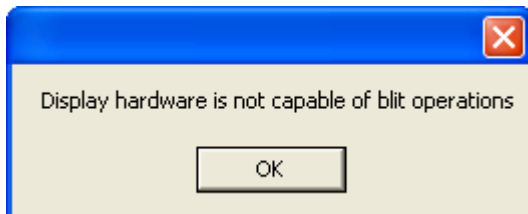
When you're prompted, click 'Install' to continue.



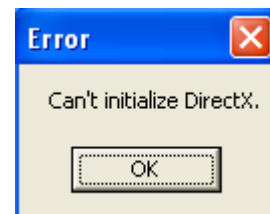
You should be able to see the image from camera now:



*Note: If you see one of these messages (or both):*



**OR**



*Your computer may not have the display capability that this IP camera requires, or you don't have Microsoft DirectX® installed. Please download Microsoft DirectX® from Microsoft's website (<http://www.microsoft.com>), and try again.*

*In some cases, your computer is able to display the image from IP camera correctly, but you'll still see these messages. If this happens, just ignore them.*



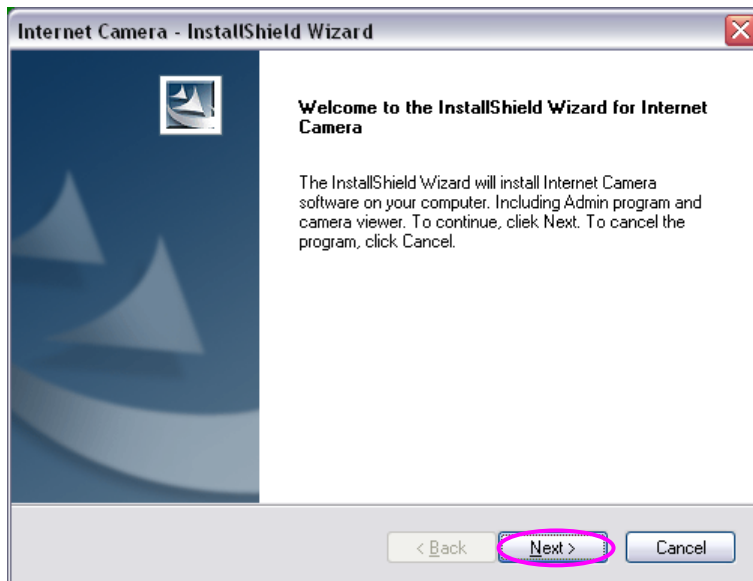
## 6. Software Installation

Follow the simple steps below to run the Install Wizard to guide you quickly through the Installation process. The following installation is implemented in Windows XP. The installation procedures in Windows 2000/XP/Server 2003 are similar.

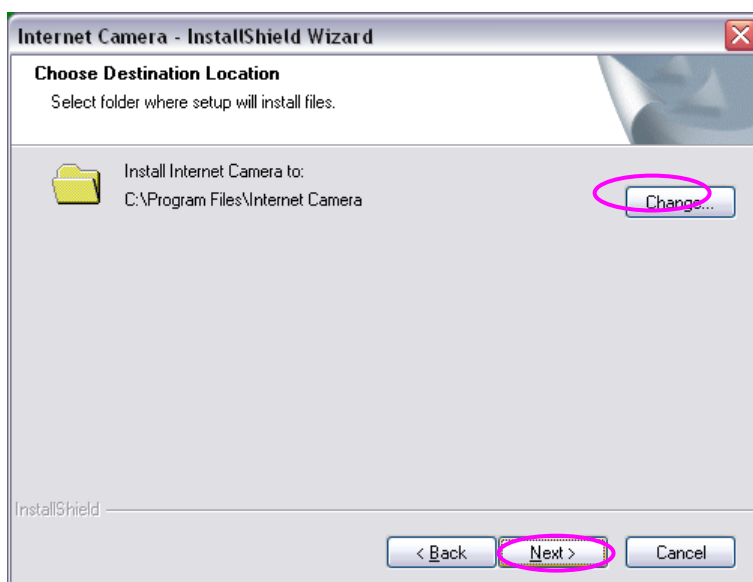
1. Insert the CD shipped along with the Internet Camera into your CD-ROM drive. The “Autorun.exe” program should be executed automatically. If not, run “Autorun.exe” manually from “Autorun” folder in the CD.
2. The Install Wizard will show four selections, select the program you want to install or click “Exit” to install the program later. The following installation steps are the demonstration of “Install Administrator Utility & Camera Viewer”.



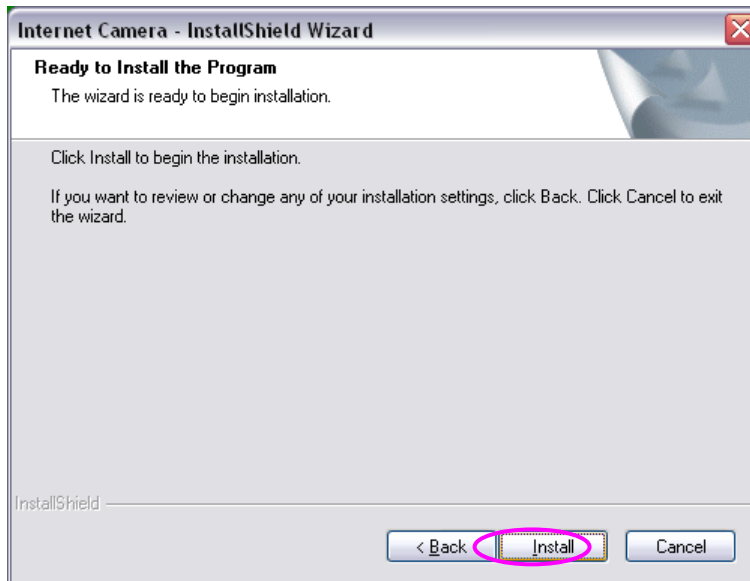
3. The system will start the installation procedures. Click “Next” to continue installation.



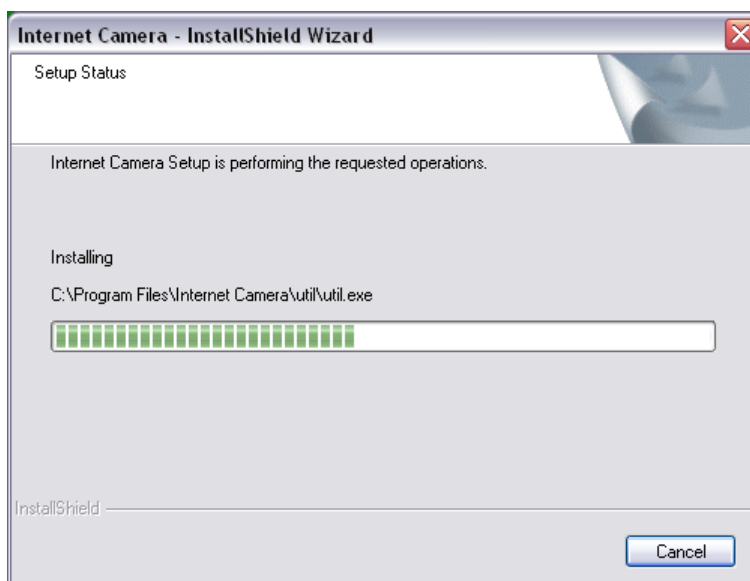
4. If you wish to install the software program in an alternate location, click “Change”; otherwise click “Next” to move on to the next step.



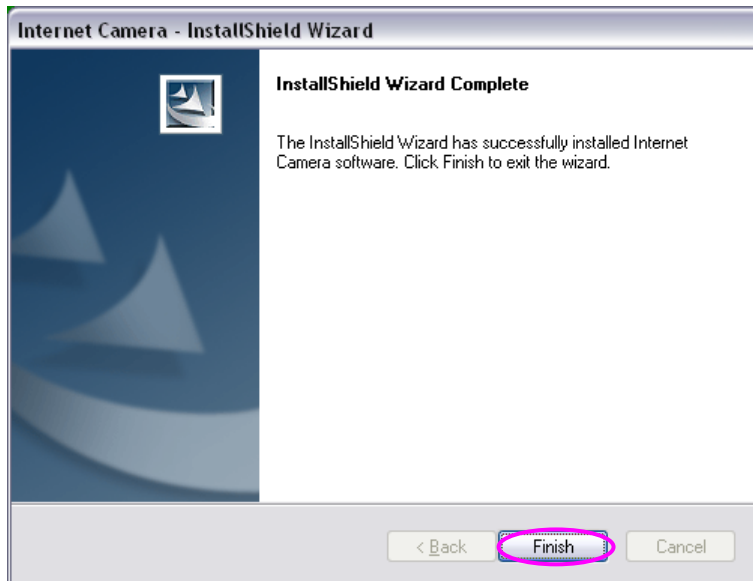
5. Click "Install" to start installing the program.



6. The system will install the program automatically.



7. Click “Finish” to complete the software installation.

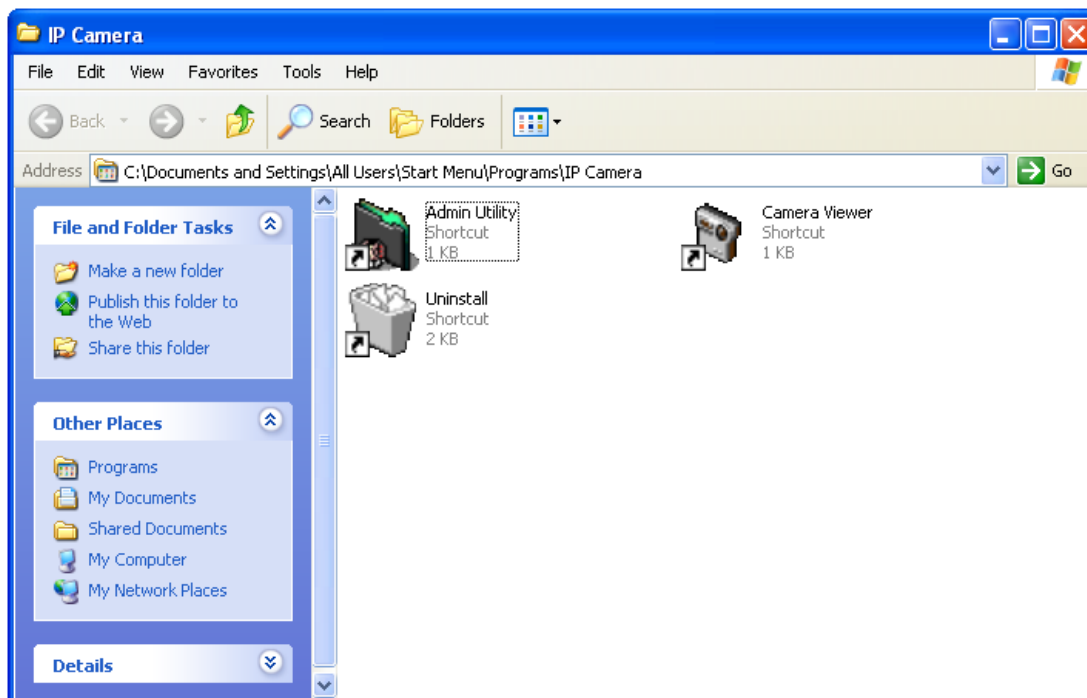


8. If you have Windows Defender (Windows XP) or other 3<sup>rd</sup> party firewall software, you may see the following (or similar) message:

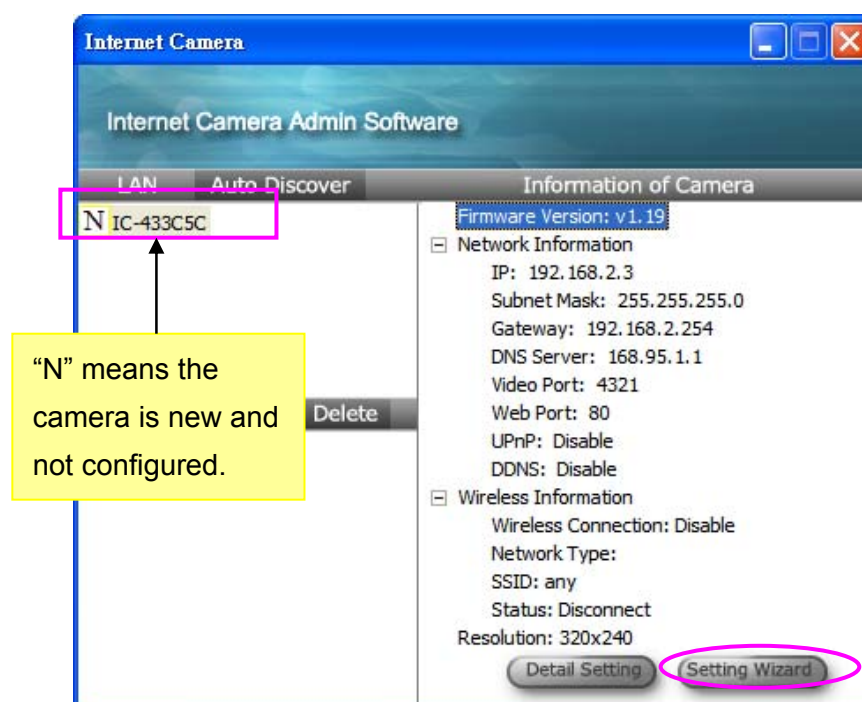


Please click ‘Unblock’ (or similar option) to let IP camera Utility pass the firewall, or the IP camera utility may not be able to function properly

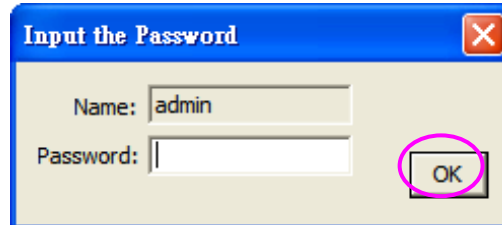
9. A new folder named 'IP Camera' in 'All Programs' will be created: Admin Utility, Camera Viewer, and Uninstall. You can use these 3 utilities to connect to the IP camera and use the functions of the camera without web browser.



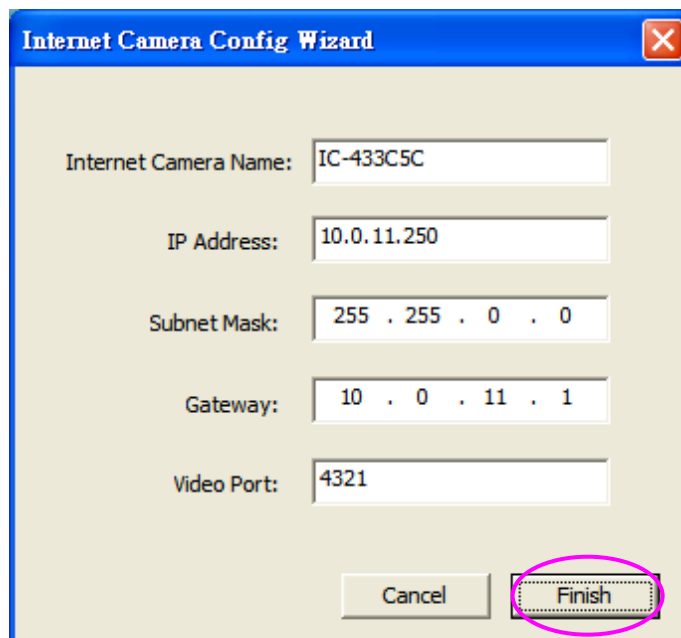
10. When the installation is completed. The system will auto run "Administrator Utility". On the Internet Camera first page, the cameras found in the network are listed in the left window. Choose the one you want to configure and click "Setting Wizard" to proceed.



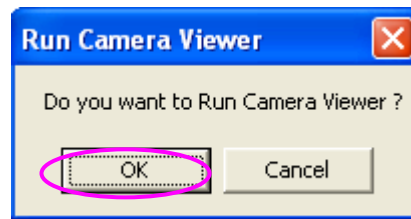
If you want to change these settings, please click 'Detail Setting' or 'Setting Wizard'. If you only need to change the basic network setting, click 'Setting Wizard'. You'll be prompted to input user name and password. The default user name is 'admin' (you can not change it), and the default password is '1234', and then click 'OK' to continue.

A dialog box titled "Input the Password" with a blue header bar and a red close button. It contains two text input fields: "Name:" with the value "admin" and "Password:" which is empty. To the right of the password field is an "OK" button, which is circled in pink.

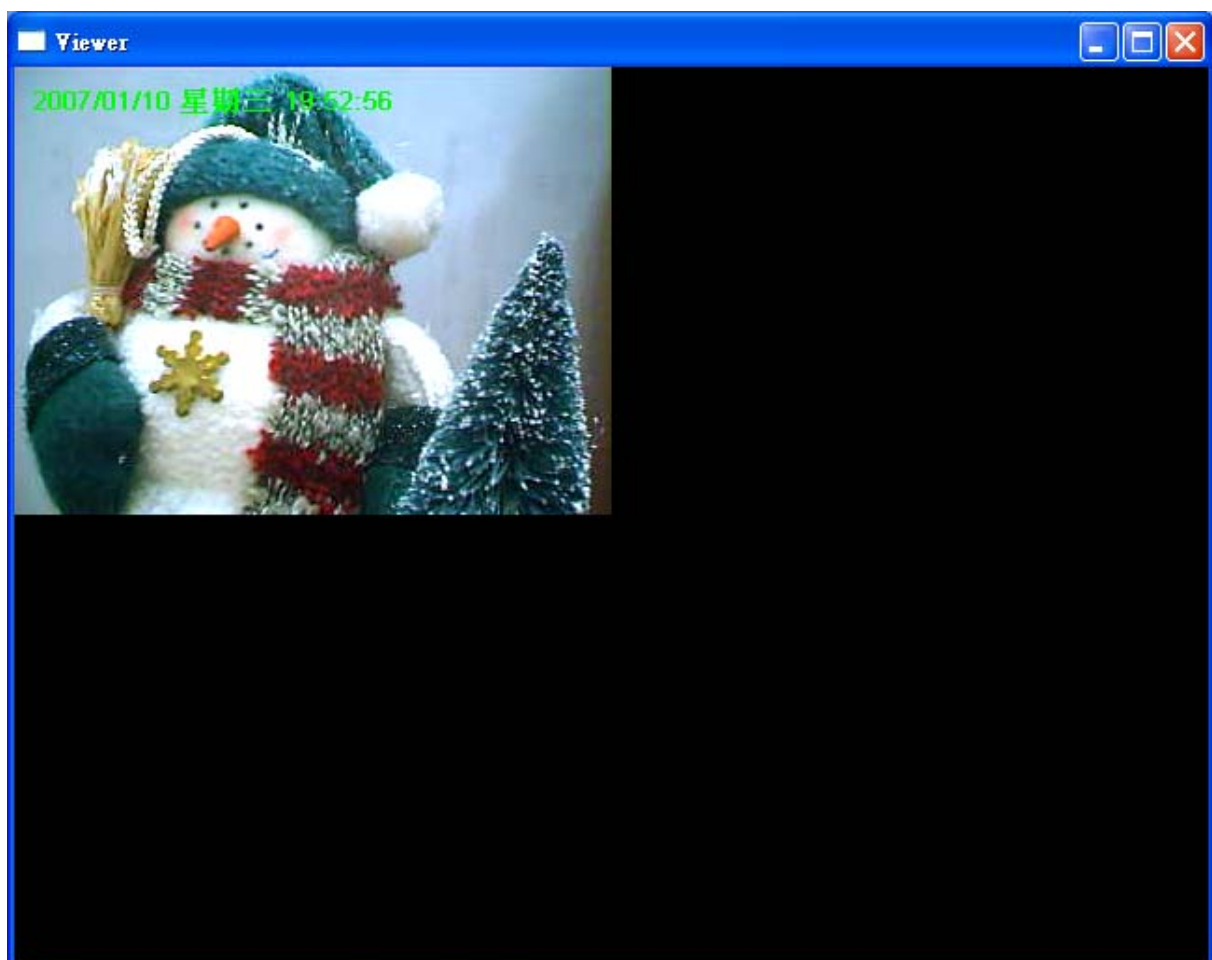
11. Internet Camera is working through the network (TCP/IP Protocol). The IP address setting must be correct, or you cannot access to the camera. The wizard program will detect the IP address status of your network automatically and suggest a free IP address for the Camera. You can accept the suggested value or enter the value manually. If you enter the value manually, please be aware that the "Subnet Mask" must be the same for both the camera and the PC. Click "Finish" to apply the configuration.

A wizard dialog box titled "Internet Camera Config Wizard" with a blue header bar and a red close button. It contains several text input fields: "Internet Camera Name:" with the value "IC-433C5C", "IP Address:" with the value "10.0.11.250", "Subnet Mask:" with the value "255 . 255 . 0 . 0", "Gateway:" with the value "10 . 0 . 11 . 1", and "Video Port:" with the value "4321". At the bottom are two buttons: "Cancel" and "Finish". The "Finish" button is circled in pink.

12. This wizard will pop up a window to ask you if you want to run the “Camera Viewer” and see the video of the Camera immediately. Select “OK” to run “Camera Viewer”.

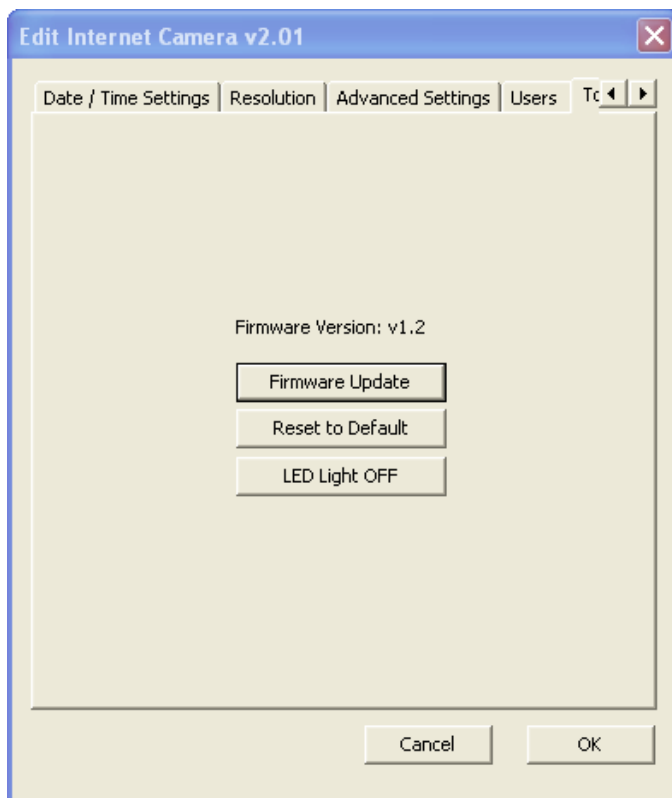


13. The “Camera Viewer” will show the video automatically. Congratulations, you can use the camera through the network to view the video from now on.



## 7. Firmware Upgrade

Here provides several tools to upgrade the firmware of this IP camera, clear all settings, or switch LED notification off.



The descriptions of every setting in this menu will be given below:

Item	Description
Upgrade Firmware	If you downloaded latest firmware file from our website, you can click this button to start to upload the firmware file to the IP camera, and you'll be prompted to provide the location of firmware file. Click 'Open' to start uploading new firmware and IP camera will start upgrading, please be patient. The IP camera will reboot after the upgrade procedure is done.



Reset to Default	<p>Clear all settings in the camera. Please think again before you do this, and then click this button to reset all settings.</p> <p><i>NOTE: IP address will be reset to default value '192.168.2.3' also. You'll need to change the IP address setting of your computer if the IP address of your computer does not begin with '192.168.2', and subnet mask is not '255.255.255.0', or you'll not be able to connect to this IP camera again.</i></p>
LED Light OFF	<p>Switch the LED light of this IP camera off, so 'LAN' and 'WLAN' LED on the IP camera will stop working, in case you don't want other people know the camera is transferring data.</p> <p>You can click this button again to switch LED lights on again.</p>

After all settings are completed, click 'OK' to save settings, or click 'Cancel' to abort and discard changes.

### **R&TTE Compliance Statement**

This equipment complies with all the requirements of DIRECTIVE 1999/5/EC OF THE EUROPEAN PARLIAMENT AND THE COUNCIL of March 9, 1999 on radio equipment and telecommunication terminal Equipment and the mutual recognition of their conformity (R&TTE)

The R&TTE Directive repeals and replaces in the directive 98/13/EEC (Telecommunications Terminal Equipment and Satellite Earth Station Equipment) As of April 8, 2000.

### **Safety**

This equipment is designed with the utmost care for the safety of those who install and use it. However, special attention must be paid to the dangers of electric shock and static electricity when working with electrical equipment. All guidelines of this and of the computer manufacture must therefore be allowed at all times to ensure the safe use of the equipment.

### **EU Countries Intended for Use**

The ETSI version of this device is intended for home and office use in Austria, Belgium, Denmark, Finland, France, Germany, Greece, Ireland, Italy, Luxembourg, Bulgaria, Cyprus, Czech Republic, Estonia, Hungary, Latvia, Lithuania, Malta, Poland, Romania, Slovakia, Slovenia, the Netherlands, Portugal, Spain, Sweden, and the United Kingdom.

The ETSI version of this device is also authorized for use in EFTA member states: Iceland, Liechtenstein, Norway, and Switzerland.

### **EU Countries not intended for use**

None







**EDIMAX Technology Co., Ltd.**  
[www.edimax.com](http://www.edimax.com)