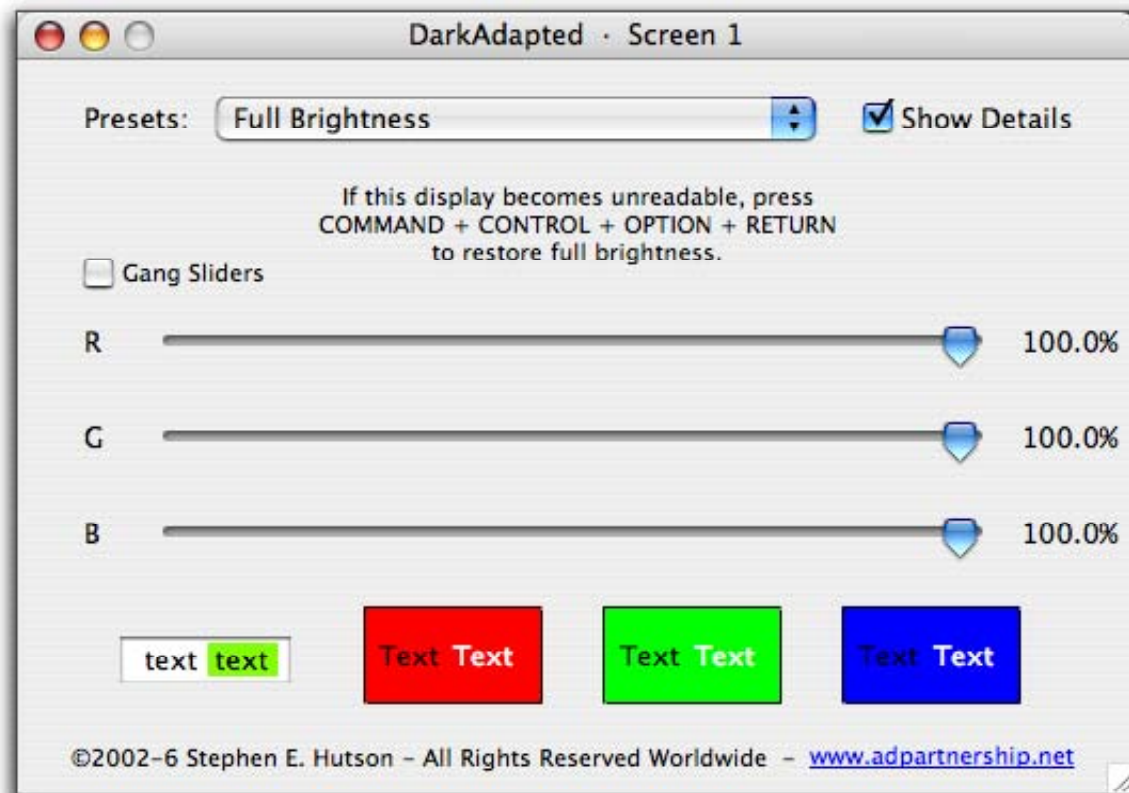
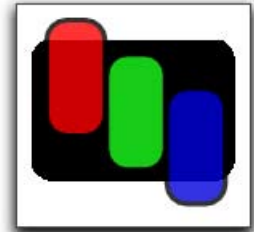


DarkAdapted and DarkAdapted Pro

Version 2.0 User Guide

©2002–2006 Stephen E. Hutson • All Rights Reserved



DARKADAPTED SOFTWARE LICENSE

Before opening DarkAdapted, carefully read the following License Agreement. Opening DarkAdapted indicates your acceptance of the terms and conditions of this Agreement. If you do not agree to abide by the terms and conditions of this Agreement, promptly return the product to the place of purchase, and your money will be refunded.

A. License. The software accompanying this License (the “Software”) and the related documentation are licensed to you by Stephen E. Hutson. You own the media on which the Software is recorded, if applicable, but Stephen E. Hutson retains title to the Software and all related documentation.

This License allows you to use the Software on a single computer and make up to ten (10) copies of the Software in machine-readable form for backup purposes only. You must reproduce on such copy the copyright notice and any other proprietary legends that were on the original copy of the Software. You may transfer all your license rights in the Software, the backup copies of the Software, the related documentation and a copy of this License to another party, provided the other party reads and agrees to accept the terms and conditions of this License, and provided you destroy all copies of the Software in your possession prior to license transfer.

B. Restrictions. The Software contains copyrighted material, trade secrets, and other proprietary material, and in order to protect them, you may not decompile, reverse engineer, disassemble, or otherwise reduce the Software to a human-perceivable form. You may not modify, network, rent, lease, loan, distribute, or create derivative works based upon the Software in whole or in part. You may not electronically transmit the Software from one computer to another over a network.

C. Termination. This License is effective until terminated. You may terminate this License at any time by destroying the Software and related documentation and all copies thereof. This License will terminate immediately without notice from Stephen E. Hutson if you fail to comply with any provision of this License. Upon termination, you must destroy the Software and related documentation and all copies thereof.

D. Exporting. You agree and certify that the Software, its related documentation, nor any copies thereof will be exported outside of the United States except as authorized and as permitted by the laws and regulations of the United States of America.

E. Limited Warranty on Media. Stephen E. Hutson warrants the media on which the Software is recorded, if applicable, to be free from defects in materials and workmanship under normal use for a period of ninety (90) days from the date of purchase as evidenced by a copy of the receipt. Stephen E. Hutson’s entire liability and exclusive remedy will be the replacement of the media not meeting this limited warranty and which are returned to Stephen E. Hutson with a copy of the receipt. Stephen E. Hutson will have no responsibility to replace media damaged by accident, abuse, or misapplication. ANY IMPLIED WARRANTIES ON THE MEDIA, INCLUDING THE IMPLIED WARRANTIES OF MERCHANTABILITY, NON-INFRINGEMENT, AND FITNESS FOR A PARTICULAR PURPOSE, ARE LIMITED IN DURATION TO NINETY (90) DAYS FROM THE DATE OF DELIVERY. THIS WARRANTY GIVES YOU SPECIFIC LEGAL RIGHTS, AND YOU MAY ALSO HAVE OTHER RIGHTS WHICH VARY BY JURISDICTION.

F. Disclaimer of Warranty of Software. You expressly acknowledge and agree that use of the Software is at your sole risk. THE SOFTWARE AND RELATED DOCUMENTATION ARE PROVIDED “AS IS” AND WITHOUT WARRANTY OF ANY KIND AND STEPHEN E. HUTSON EXPRESSLY DISCLAIMS ALL WARRANTIES, EXPRESS OR IMPLIED, INCLUDING, BUT NOT LIMITED TO, THE IMPLIED WARRANTIES OF MERCHANTABILITY, NON-INFRINGEMENT, AND FITNESS FOR A PARTICULAR PURPOSE. STEPHEN E. HUTSON DOES NOT WARRANT THAT THE FUNCTIONS CONTAINED IN THE SOFTWARE WILL MEET YOUR REQUIREMENTS, OR THAT THE OPERATION OF THE SOFTWARE WILL BE UNINTERRUPTED OR ERROR-FREE, OR THAT DEFECTS IN THE SOFTWARE WILL BE CORRECTED. FURTHERMORE, STEPHEN E. HUTSON DOES NOT WARRANT OR MAKE ANY REPRESENTATIONS REGARDING THE USE OF THE SOFTWARE OR RELATED DOCUMENTATION IN TERMS OF THEIR CORRECTNESS, ACCURACY, RELIABILITY, OR OTHERWISE. NO ORAL OR WRITTEN ADVICE OR INFORMATION GIVEN BY STEPHEN E. HUTSON OR ITS REPRESENTATIVE SHALL CREATE A WARRANTY OR IN ANY WAY INCREASE THE SCOPE OF THIS WARRANTY. SHOULD THE SOFTWARE PROVE DEFECTIVE, YOU ASSUME THE ENTIRE COST OF ALL NECESSARY SERVICING, REPAIR, OR CORRECTION. SOME JURISDICTIONS DO NOT ALLOW THE EXCLUSION OF IMPLIED WARRANTIES, SO THE ABOVE EXCLUSION MAY NOT APPLY TO YOU.

G. Limitation of Liability. UNDER NO CIRCUMSTANCES, INCLUDING NEGLIGENCE, SHALL STEPHEN E. HUTSON OR ITS DIRECTORS, OFFICERS, EMPLOYEES, OR AGENTS, BE LIABLE FOR ANY INCIDENTAL, SPECIAL, OR CONSEQUENTIAL DAMAGES THAT RESULT FROM THE USE OR INABILITY TO USE THE SOFTWARE OR RELATED DOCUMENTATION, EVEN IF IT HAS BEEN ADVISED OF THE POSSIBILITY OF SUCH DAMAGES. SOME JURISDICTIONS DO NOT ALLOW THE LIMITATION OR EXCLUSION OF LIABILITY FOR INCIDENTAL OR CONSEQUENTIAL DAMAGES, SO THE ABOVE LIMITATION OR EXCLUSION MAY NOT APPLY TO YOU.

In no event shall Stephen E. Hutson’s total liability to you for all damages, losses, and causes of action (whether in contract, tort [including negligence], or otherwise) exceed the amount paid by you for the Software.

H. Controlling Law and Severability. This License shall be governed by and construed in accordance with the laws of the United States and the State of Illinois.

Section 1: Introduction	4
1.1 — License Agreement	4
1.2 — What is DarkAdapted?	4
1.3 — System Requirements	4
1.4 — Special Thanks	4
1.5 — Trademark Information	4
1.6 — Guide Layout	4
1.7 — Connecting to Our Web Site	5
Section 2: Installation and Setup	5
2.1 — Installation	5
2.2 — First Run	5
2.3 — Registering DarkAdapted Pro	6
2.4 — Selecting a Preset	7
2.5 — Showing Additional Detail	7
2.6 — Showing Less Detail	8
2.7 — Ganged Sliders	8
2.8 — Saving a Preset	9
2.9 — Managing Presets	9
2.10 — Editing Preferences	10
2.11 — Independent Display Control (Pro Only)	12
2.12 — Scheduled Event Execution (Pro Only)	13
2.13 — Internet Update Checking	15
Section 3: AppleScript Guide	17
3.1 — Introduction	17
3.2 — Command Reference	17
Section 4: Troubleshooting	21
4.1 — Error Messages in Windows	21
4.2 — My Monitor is Stuck at Reduced Brightness!	21
4.3 — Common Problems	22
4.4 — Technical Support	22

Section 1:

Introduction



DarkAdapted can dim your screen to the point that it becomes unreadable! If this occurs, the default escape sequence is SHIFT CONTROL OPTION / ALT, which will return your screen to full brightness.

1.1 — License Agreement

Before using DarkAdapted, carefully read the enclosed Software License Agreement. If you do not agree with any provision of this agreement, do not use DarkAdapted, and delete all copies of the program. Using DarkAdapted indicates your acceptance of the Software License Agreement.

DarkAdapted is freeware, but remains a copyrighted program. Distribution of DarkAdapted must include this User Guide and all other documentation.

1.2 — What is DarkAdapted?

DarkAdapted is a gamma control application program. It modifies your screen gamma settings so that you may, for example, preserve your dark adaptation while using your computer.

DarkAdapted boasts such features as:

- Includes the same powerful screen adjustment technology as [ScopeDriver](#), a full featured telescope control program.
- Customizable gamma presets. Use predefined settings, create your own, and manipulate your presets with ease.
- High-resolution sliders allow you to adjust red, green, and blue video components individually and in real time.
- Small screen mode hides advanced controls, minimizing the use of valuable screen real estate.
- Gamma toggle keys offer quick switching between full brightness and the most recent gamma setting. Modifier keys are full assignable, and are available system-wide.
- Switching to gamma presets is performed via smooth fades, never abrupt shifts in screen color or brightness.
- Control console “remembers” its position on your screen in both its minimized and maximized modes.
- Saved gamma preset is restored when DarkAdapted is launched, and reset when DarkAdapted quits.

- Useful display features show gamma changes’ effects on selected text, as well as text on different backgrounds.
- Useful numeric and graphical readouts of gamma values.
- In multiple monitor setups, DarkAdapted controls all displays in unison.
- Automatic and/or manual Internet update checking ensures you have the latest version.
- And many other time savers and productivity enhancers.

Additional features available in **DarkAdapted Pro** include:

- Independent control windows for multiple display setups.
- Scheduled gamma fades by day of week, time, and/or sunrise and sunset.
- Scroll wheel support for slider motion and *Presets* pop-up menu.
- Expanded Applescript support.

1.3 — System Requirements

DarkAdapted requires the following hardware setup:

- **Mac:** Intel Macintosh or Power Macintosh.
- **Windows:** PC capable of running Windows 95 or later.
- At least 4 MB available RAM (6 MB recommended).
- At least 2 MB available hard disk space.
- **Windows:** Compatible monitor and video card.
- **Mac:** Mac OS X: 10.2 or later.
- **Windows:** Windows 95 or later.


1.4 — Special Thanks


Special thanks to my wife, Nancy, who put up with endless DarkAdapted demonstrations. :-)

1.5 — Trademark Information

All trademarks referenced herein are property of their respective owners.

1.6 — Guide Layout

 This symbol references features or behavior specific to Macintosh computers. Such items are not applicable to IBM-compatible PC's.

 When you see this symbol, the manual discusses features or behavior specific to IBM-compatible computers. Such items do not apply to Macintosh computers.

Pro This symbol denotes features relevant only to **DarkAdapted Pro**, which operates only on the Macintosh platform.

Throughout this User Guide, menu selections and menu titles are depicted using the following typeface: Menu Title

Keyboard equivalents are shown using the Macintosh command-key symbol, along with the modifier key(s). For example, ⌘[S] means that you hold down the ⌘ (command) key while typing the letter [S].

Win If you are using DarkAdapted for **Windows**, substitute the [CONTROL] key for the ⌘ key.

Win If a keyboard equivalent with no menu counterpart doesn't seem to be working, simply add the [SHIFT] key to implement the action. This is necessary because Windows doesn't allow window keyboard shortcuts that override menu keyboard shortcuts, even when the menu is disabled.

Window names appear in boldface, as in **Main Window**.

DarkAdapted has been designed with ease of use in mind. Any features of the program not covered in this brief guide are, hopefully, self-explanatory. Your suggestions for improvement are always welcome!

1.7 — Connecting to Our Web Site

Clicking the web address in the **Main Window** will launch your browser and attempt to connect to the [DarkAdapted web site](#). This will work *only if* you have defined a default browser using your system software.

Section 2: Installation and Setup

2.1 — Installation

To install DarkAdapted and its documentation, you'll follow the below procedure. You must have at least 12 megabytes of free hard drive space.

Mac Locate and mount the Macintosh disk image. The disk image will contain a folder which contains the DarkAdapted application program, documentation, and extras.

Win Locate and decompress the downloaded archive. The expanded folder contains the DarkAdapted application program and its documentation.

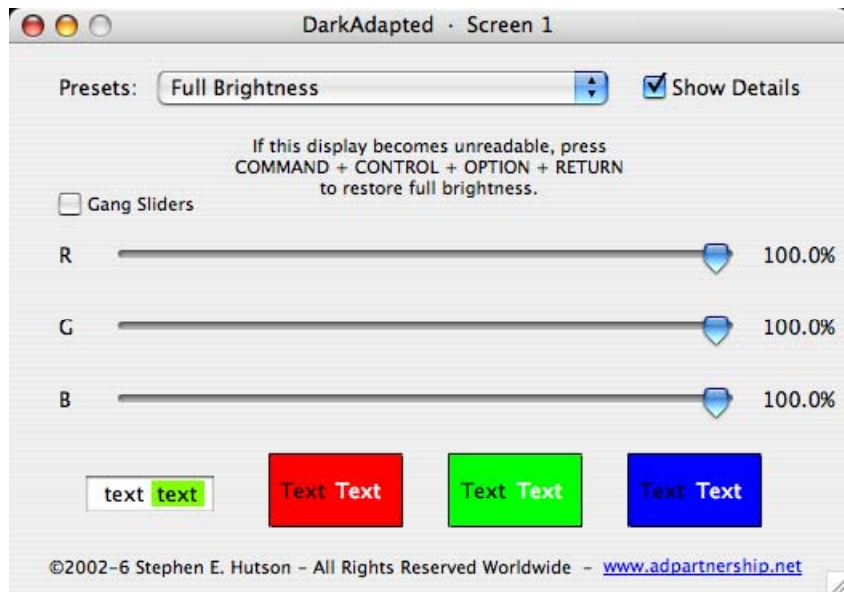
- Drag the DarkAdapted Folder to the desired location.
- Open the DarkAdapted folder, then double-click the file entitled "Read Me." Read this document, which may contain late-breaking information or special instructions.
- The next step depends on which operating system you are using:

Mac Double-click the "DarkAdapted X" icon to open DarkAdapted. If you find a file named "DarkAdapted.exe," you have downloaded the version for Windows. If you do not have the correct application file for your operating system, check the [DarkAdapted web site](#) for the correct file.

Win If you are using a Windows PC, double-click on the icon entitled "DarkAdapted.exe." If you do not have the correct application file for your operating system, check the [DarkAdapted web site](#) for the correct file.

2.2 — First Run

Double-click on the icon representing the DarkAdapted application. The **Main Window** will then appear, as depicted below:



Main DarkAdapted Window

Note the text that appears below the *Presets*: pop-up menu. **These are the keys that you must hold down to return to full screen brightness**, in the event that your adjustments result in a monitor that's too dark to read. Press these keys once to return to full brightness, and again to return to the previous gamma setting.

Mac The default gamma toggle keys on the Mac platform are ⌘ ⇧ ⏏ (although they may be changed in the **Preferences Window**). All of these keys must be held down simultaneously.

Win The default Windows gamma toggle keys are ⌘ ⇧ ⏏ (changeable via the **Preferences Window**). All of these keys must be held down simultaneously.

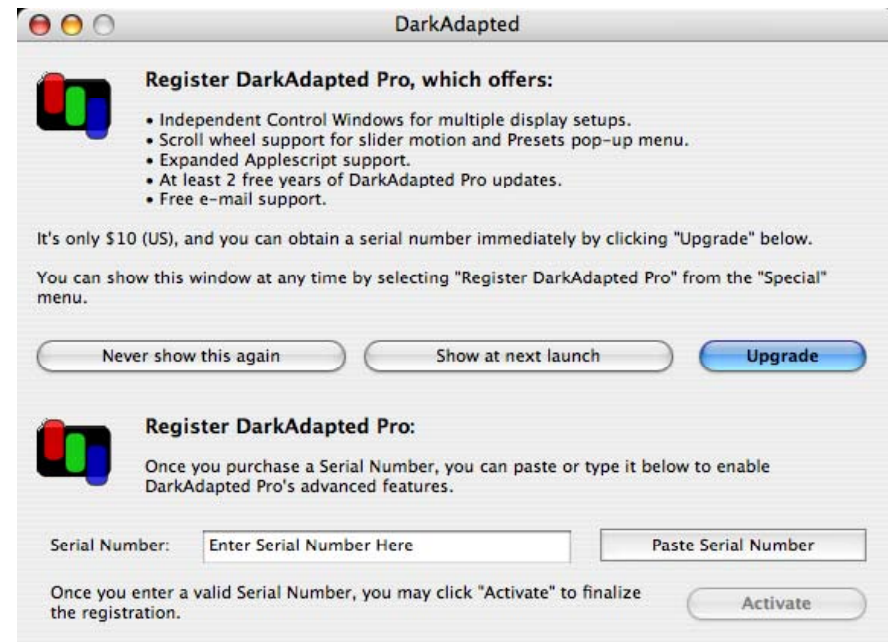
Pro **DarkAdapted Pro** can present multiple **Main Windows**, with each window appearing on a different screen. In this mode, the gamma toggle keys apply to whichever main window appears in front.

The gamma toggle keys may also be used to toggle between full brightness and the most recently selected gamma values. Simply release and again press the gamma toggle keys to toggle between the two states.

2.3 — Registering DarkAdapted Pro

Mac DarkAdapted Pro is only available to users running DarkAdapted on a Macintosh; it is not available on Windows, owing to gamma control limitations on this platform.

After you have launched DarkAdapted a few times, the **Register DarkAdapted Pro** window appears, as illustrated below:



Register DarkAdapted Pro Window

You may also summon the above window at any time by selecting **Register DarkAdapted Pro...** from the **Special** menu.

DarkAdapted Pro offers several additional features over the basic program, including:

- The ability to control multiple displays independently, using a separate **Main Window** for each display.
- Scheduling capabilities, including defining events that change gamma values on particular days of the week, at certain times, and/or at sunrise or sunset. Scheduled events may control all displays and/or a single display.
- Scroll wheel support for the *Presets* pop-up menu and the gamma sliders. In the case of the gamma sliders, scroll wheel control moves the sliders in unison, and offers the option to either preserve or ignore relative gamma

intensities. In contrast, selecting *Gang Sliders* only offers the option to preserve relative gamma intensities.

- Enhanced Applescript support to support the additional features of DarkAdapted Pro.

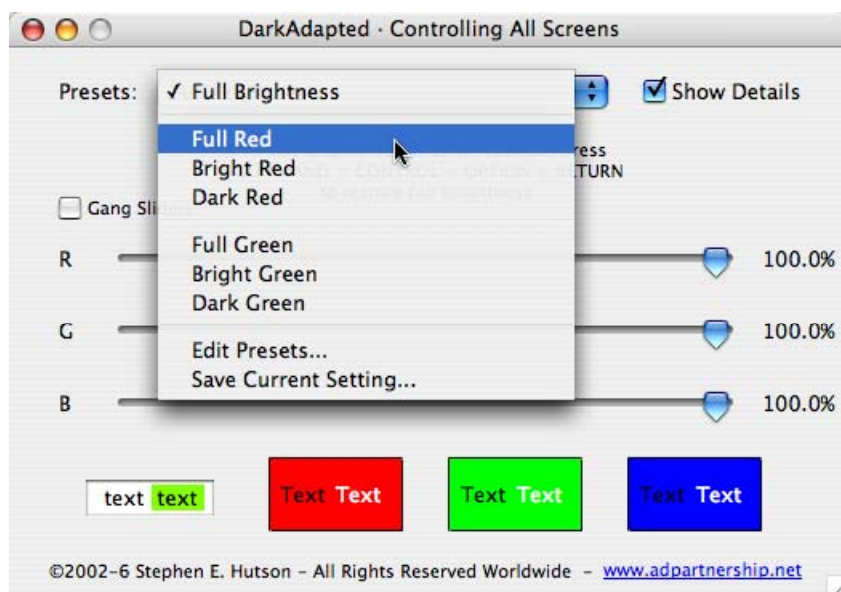
To immediately obtain a serial number and begin using DarkAdapted Pro's advanced features, connect to the Internet if necessary, then click the *Upgrade* button. You will be directed to our secure web site, where you may immediately obtain a serial number.

Copy the serial number from your order confirmation screen, then click the *Paste* button to enter it into the *Serial Number:* test field. Alternatively, you may click to select the *Serial Number:* text entry field, then type your registration code.

Once a valid serial number has been entered, the *Activate* button becomes operational, and you may click it to complete the upgrade process. All of DarkAdapted Pro's features will then be enabled.

2.4 — Selecting a Preset

DarkAdapted includes several built-in presets, selectable via the *Presets:* pop-up menu, as depicted below.



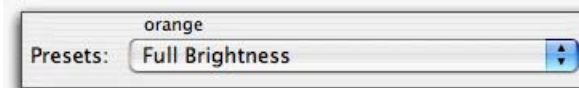
The Presets Pop-up Menu

When a preset is selected, the screen fades to the selected gamma setting.



The most recent preset selected may be restored when you next launch DarkAdapted, by changing the appropriate setting in the **Preferences Window**.

Any preset in the *Presets:* pop-up menu may also be selected via the keyboard whenever the **Main Window** is frontmost. In the below illustration, the text *orange* has been typed on the keyboard, and so appears above the *Presets:* pop-up menu:



Miscellaneous Options — Preferences Window

DarkAdapted will then automatically display the first preset in the *Presets:* pop-up menu beginning with the text you type. For example, typing *ora* would select a preset named *Orange*, if that is the first preset in the menu beginning with the three letters *ora*.



Typing a single **[SPACE]** character will toggle between *Full Brightness* and the last selected gamma setting.

If no entries in the *Presets:* pop-up menu begin with the text you typed, nothing is selected from the menu, and the text you typed will clear from the display after a one-second delay.

The **[BACKSPACE]** key will delete the last character typed.



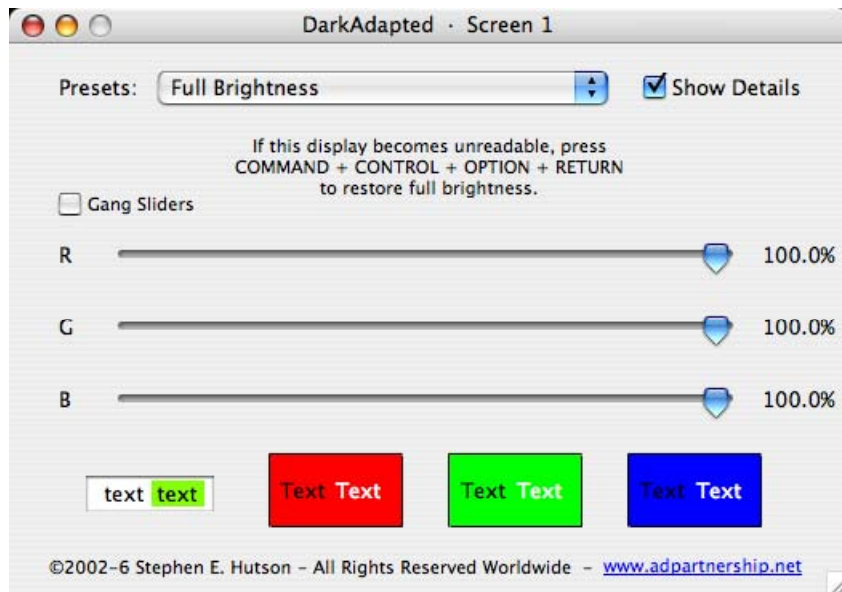
Typed entries normally select a matching preset one second after you type the last character. To select the matching preset immediately, press the **[RETURN]** or **[ENTER]** key after typing the preset's name.



DarkAdapted Pro users may position the cursor over the *Presets:* pop-up menu and change the selected preset by using the scroll wheel on the mouse.

2.5 — Showing Additional Detail

When first launched, DarkAdapted displays its **Main Window** with all of its controls and explanatory text. To display the full (maximized) **Main Window** at any time, click to select the checkbox control entitled *Show Details* to reveal additional controls and displays, as shown below.



Expanded Main Window

The three slider controls control the primary colors red, green, and blue — and they are labeled with the first letter of each color’s name. To the right of each control is displayed the actual gamma value of the corresponding color, which by default show the current gamma percentage for each primary color. You may change the readouts to instead display the actual gamma value (between 0 and 255) in the **Preferences Window**.

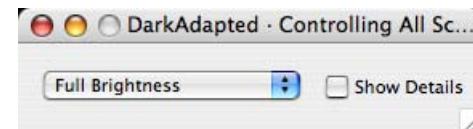
Click and drag any slider to change its gamma value.

The four regions near the bottom of this window reveal the results of your gamma adjustments. The text field at lower left displays both selected and normal text; the remaining displays show both black text and white text on backgrounds that correspond to the three primary colors.

These display regions are useful in determining whether your changes may render text or graphics unreadable under certain circumstances.

2.6 — Showing Less Detail

Click to deselect the **Main Window**’s *Show Details* control to minimize the **Main Window**, as depicted below:



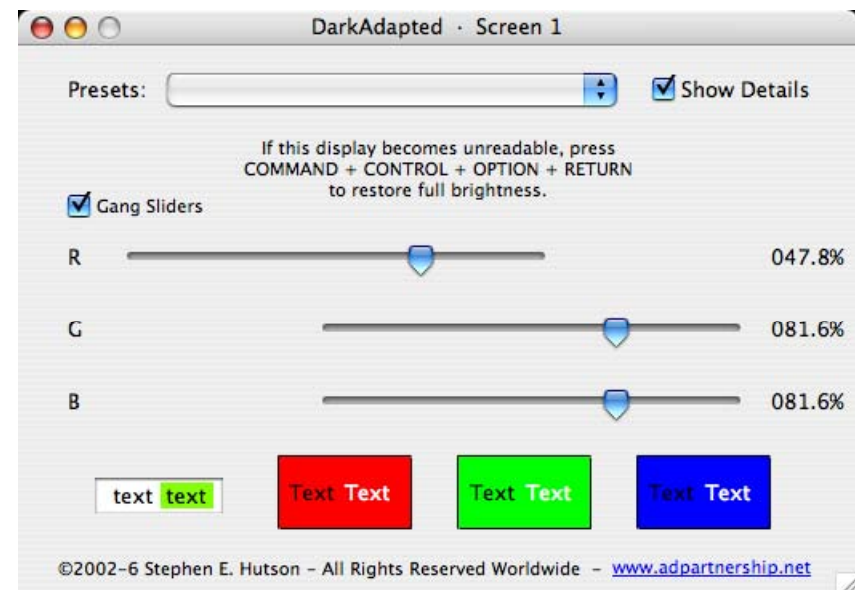
Minimized Main Window

When minimized, the **Main Window** occupies much less screen area, hiding the text displays, the gamma sliders, and the text which reminds you which gamma toggle keys will restore the screen to full brightness.

DarkAdapted “remembers” the **Main Window**’s position independently for both its expanded and minimized states. This allows you to preserve one desired screen position for the expanded **Main Window**, and a different screen position for when the window is minimized.

2.7 — Ganged Sliders


By default, DarkAdapted allows independent control of each gamma channel (red, green, and blue). To instead move the sliders in unison, click to select the *Gang Sliders* control in the **Main Window**, as depicted below:



Ganged Sliders Mode

Note that the width of each slider may be reduced in this mode. This is because ganged slider mode preserves the relative red, green, and blue values, and DarkAdapted does not allow a value below 0% or greater than

100%. The width of the sliders represents the maximum allowable width that ensures that no slider can be set to a value that is out-of-range.

 The *Gang Sliders* control is disabled when at least one slider is at 100% and at least one slider is at 0%, since no slider can be adjusted below 0% or above 100%.

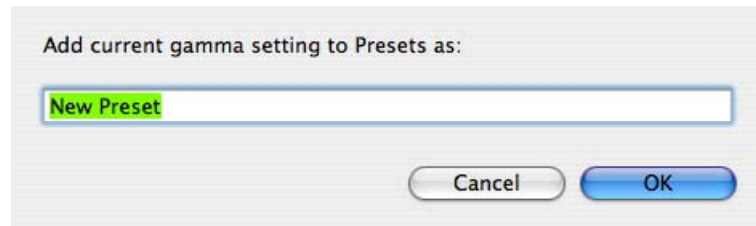
Pro If you instead wish to move the sliders in unison *without* preserving relative gamma values, position the mouse over the slider region and adjust the scroll wheel on your mouse. Note that scroll wheel support is a DarkAdapted Pro feature which requires registration.

The *Gang Sliders* setting is preserved when you quit and re-open DarkAdapted.

2.8 — Saving a Preset

Once you have defined a useful screen gamma value, you will probably want to use it again. DarkAdapted provides a simple method by which you may add as many presets as you desire.

Add a preset by selecting **Save Current Setting** from the *Presets:* pop-up menu (or by selecting **Save Current Screen as Preset** from the **File** menu, or by typing **⌘S**). A window will then appear, where you may enter a descriptive name for your preset, as shown below.



Creating a Preset

Enter the desired name for the preset, then click **OK** to add the preset to the top region of the *Presets:* pop-up menu. If you wish to continue without adding the new preset, simply click **Cancel** to return to the **Main Window**.

2.9 — Managing Presets

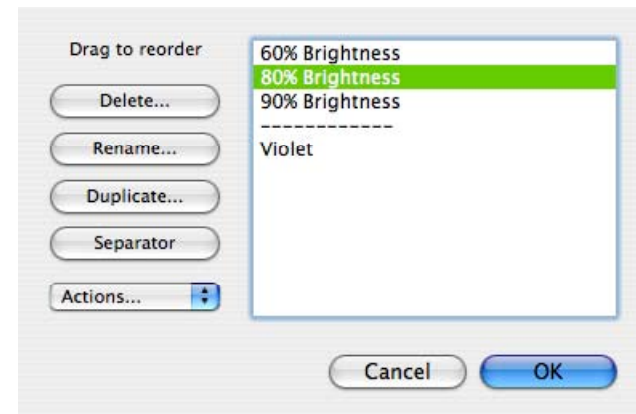
DarkAdapted gives you control over how your presets appear in the pop-up menu, and the program lets you delete, duplicate, and rename presets that you have added to the program.

Presets may also be stored in disk files. If you have downloaded a presets file — or wish to load one of the sample files included with DarkAdapted — you

may double-click the presets file or drag it over the DarkAdapted application icon to load its contents. You may also load a presets file from the **Edit Presets Window**, as described below.

Win Since DarkAdapted does not attempt to modify your Windows registry, double-clicking a presets file may not load the file.

You may edit your presets by selecting **Edit Presets...** from the *Presets:* pop-up menu, by selecting **Edit Presets...** from the **Edit** menu, or by typing **⌘E**. The **Edit Presets Window** appears, as shown below:




Edit Presets Window

Every preset that you have defined or imported from a file will appear in the scrolling list. Select all presets by choosing **Select All** from the **Edit** menu, or by typing **⌘A**.

To change the name of any preset, double-click a preset (or select it and click **Rename**) to bring up a dialog where you may change the preset's name.

Duplicate an entry by selecting it and clicking **Duplicate** to save a copy of a preset under a different name.

Delete any number of presets by selecting one or more list entries, then click the **Delete** button (or press the **DELETE** or **BACKSPACE** key). The selected preset(s) will be deleted after a confirming dialog.

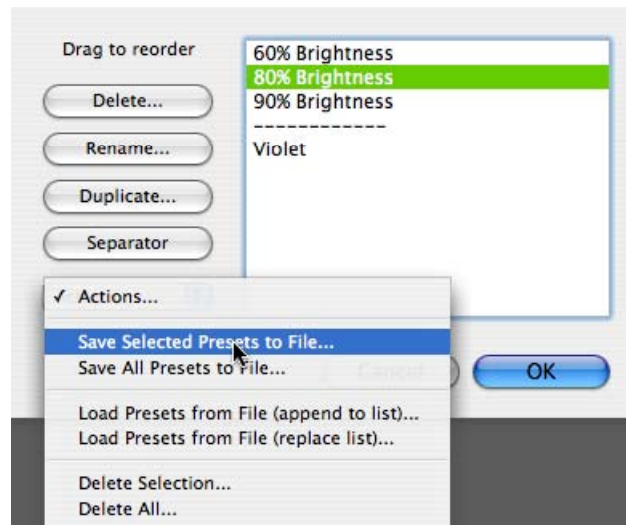
 You may skip the confirm deletion dialog by holding down the **OPTION / ALT** key while deleting the entry as described above.

You may also change the order by which your presets appear in the **Main Window's Presets:** pop-up menu. Simply click and hold on an entry, then drag it to the desired location in the listing.

You may also organize your presets by adding separators to your listing. Clicking the *Separator* button inserts a separator after the currently selected preset. If no preset is selected, a separator is added to the end of the listing.

DarkAdapted does not allow the following actions: adding a separator when another separator is selected, exporting only separators to a file, renaming a separator, or duplicating a separator.

The pop-up menu labeled *Actions...* offers additional options when you click on it and hold down the mouse button, as depicted below:



The Actions Pop-up Menu

Select one of the options from this pop-up menu, as described below:

- When at least one preset is selected, you may choose *Save Selected Presets to File...* to summon a save dialog, where you may specify a name and disk location for the presets file. Only the selected preset(s) (and separators, if any) will be saved to the disk file.
- When one or more presets have been defined, you may choose *Save All Presets to File...* to summon a save dialog, where you may specify a name and disk location for the presets file. All presets and separators in the scrolling list will be saved to the disk file.
- When no presets have been defined, you may select *Load Presets from File...* to summon an open dialog, where you may select a presets file from any available disk. Any presets and separators in the disk file will populate the scrolling presets listing.

- When one or more presets have been defined, you may choose *Load Presets from File (append to list)...* to summon an open dialog, where you may select a presets file from any available disk. Any presets and separators in the disk file will be added to the end of the scrolling presets listing, and will become selected.

- When one or more presets have been defined, you may choose *Load Presets from File (replace list)...* to summon a file selection dialog, where you may select a presets file from any available disk. Any existing presets will be removed from the scrolling listing, and all presets and separators in the disk file will populate the scrolling presets listing, and will become selected. You may suppress the warning dialog by holding down the **OPTION / ALT** key.

- When at least one preset is selected, you may choose *Delete Selection...* to remove the selected presets and/or separators from the listing. A confirming dialog will appear, but you may suppress it by holding down the **OPTION / ALT** key.

- When at least one preset has been defined, you may choose *Delete All...* to remove all presets and/or separators from the listing. A confirming dialog will appear, but it may be avoided by holding down the **OPTION / ALT** key.



When loading or saving presets files, the file selection dialog opens at the default presets file directory (folder). This folder is defined as being located in the same directory as DarkAdapted, containing “Presets” in the folder’s name. If no folder meets this requirement, DarkAdapted selects the first folder it may find containing presets files. You may override this behavior by holding down the **SHIFT** key while opening or saving presets files.

When you are satisfied with the changes you have made in the **Edit Presets Window**, click the **OK** button to implement your changes, or click *Cancel* to discard all changes you made since the window opened.

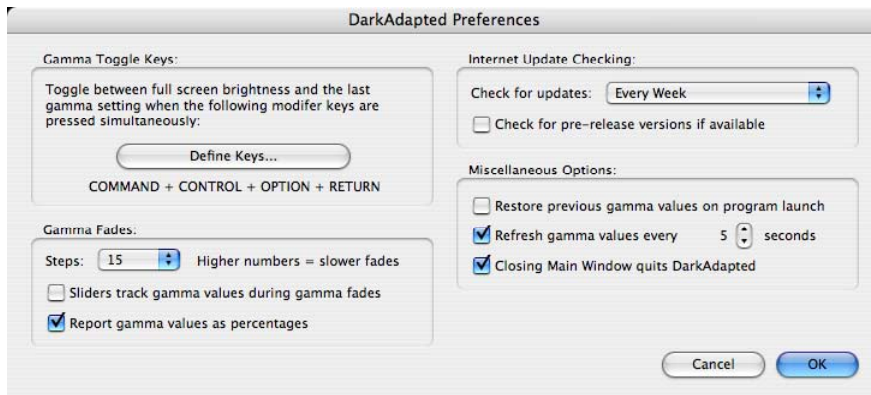
2.10 — Editing Preferences

To summon the **Preferences Window**, select the **Preferences...** menu item as described below, or type **⌘,** (comma).

Mac Select **Preferences...** from the DarkAdapted X menu.

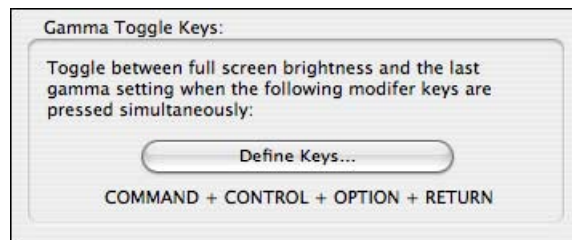
Win Select **Preferences...** from the Edit menu.

The **Preferences Window** will then appear, as depicted below:



DarkAdapted Preferences Window

The **Preferences Window** is where you can customize DarkAdapted to suit your tastes and requirements. There are several groups of controls in this window, and each group is pictured and described below.



Gamma Toggle Keys — Preferences Window

The *Gamma Toggle Keys*: section, depicted above, allows you to select which keys — when held down simultaneously — will return your monitor to full brightness. Pressing the keys again will restore the previous gamma setting. Click the *Define Keys...* button to change the gamma toggle keys, and the following window appears:



Assign Gamma Toggle Keys Window

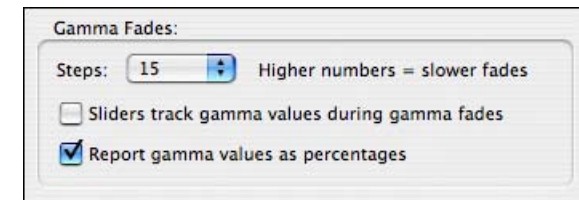
Select any modifier key(s) by clicking to select the corresponding checkbox control, and type a non-modifier key to change the displayed key name.

Mac Modifier keys are **⌘**, **⇧**, **⌥** and **⌃**. Non-modifier keys are most other keys on your keyboard.

Win Modifier keys are **⌃**, **⇧**, **⌥** and **⊞**. Non-modifier keys are most other keys on your keyboard.

At least one modifier key must be selected. The selected non-modifier key appears highlighted to the right of the modifier key controls.

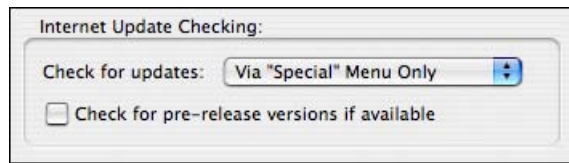
Click **OK** to save the changes you made to the gamma toggle keys, or click **Cancel** to close the window without changing the key combination.



Gamma Fades — Preferences Window

The section entitled *Gamma Fades*: contains three controls:

- The *Steps* pop-up menu lets you control the speed of gamma transitions. Selecting “1” will result in a nearly instantaneous gamma transition. The default value of “60” results in a gamma fade which lasts approximately one second.
- Selecting the control labeled *Sliders track gamma values during gamma fades* causes the slider controls in the **Main Window** to move as their corresponding gamma values change.
- *Report gamma values as percentages* controls how the current gamma values are displayed to the right of the **Main Window**’s gamma control sliders. When selected, the readouts are populated with percentage values between zero and 100%. When this control is deselected, the slider readouts report the gamma value as integers between zero and 255. This controls display format only; functionality is not affected by this control’s setting.



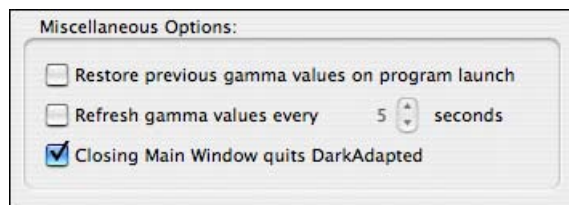
Internet Update Checking — Preferences Window

The *Internet Update Checking*: section controls DarkAdapted's version checking functionality, as described below:

- The *Check for updates*: pop-up menu controls whether DarkAdapted checks for updates manually, or automatically at a selectable interval. Select *Via "Special" Menu Only* to check for newer versions of DarkAdapted only when you select *Check for Program Updates...* from the **Special** menu. If you select *Every Week*, DarkAdapted will check for a newer version every seven days. Selecting *Every Month* causes DarkAdapted to check for updates every thirty days.
- To also check for newer alpha or beta versions of DarkAdapted, click to select *Check for pre-release versions if available*. Pre-release versions of DarkAdapted always check for such releases, regardless of this control's setting.



An Internet connection must be established in order for update checking to occur. If you use a dialup or other Internet connection that is not always available, we recommend selecting *Via "Special" Menu Only* from the *Check for updates*: pop-up menu.



Miscellaneous Options — Preferences Window

The *Miscellaneous Options*: controls are described below:

- When the control labeled *Restore previous gamma values on program launch* appears with a checkmark, then DarkAdapted will store the state of all gamma sliders (and the *Presets* popup menu, if applicable) when you quit DarkAdapted. The next time you launch DarkAdapted, the screen gamma will be returned to the saved values.

Pro When you reopen DarkAdapted — and its previous state was set to control displays independently, all displays will be returned to

their previous gamma values when *Restore previous gamma values on program launch* is selected.

- The *Refresh gamma values every N seconds* checkbox, when selected, causes DarkAdapted to re-implement your screen's gamma settings periodically. This may be used, for example, to retain your preferred gamma setting when entering and/or exiting a screen saver, which will usually interfere with DarkAdapted's settings. Use the small arrows to select a refresh frequency between 1 and 60 seconds.
- Click to select *Closing Main Window quits DarkAdapted* if you want DarkAdapted to quit whenever any **Main Window** is closed (the default behavior). De-select this control to simply hide the **Main Window** using its close control. If you hide the window in this manner, you may again show it by selecting *Show Main Window* from the **Special** menu.

Win Because closing the **Main Window** will leave you with no menubar on the Windows platform, *Closing Main Window quits DarkAdapted* is disabled on Windows.

To implement any changes made in the **Preferences Window**, click the *OK* button, or click *Cancel* to discard any changes made in this window.

2.11 — Independent Display Control (Pro Only)

Pro Independent display control is only available if you have upgraded to DarkAdapted Pro. To upgrade, select *Register DarkAdapted Pro...* from the **Special** menu.

By default, DarkAdapted controls all monitors using a single **Main Window**. To instead use separate **Main Windows** to control multiple monitors, select *Control Displays Independently* from the **Edit** menu (or type ⌘⌘). This will open multiple windows, one for each connected display.

When in independent display mode, the *Control Displays Independently* menu item appears with a check mark next to it.



If DarkAdapted Pro is set to *not* control displays independently, and a scheduled event specifies that a gamma fade should apply to a specific display, DarkAdapted Pro will automatically enable independent display control before executing the event.

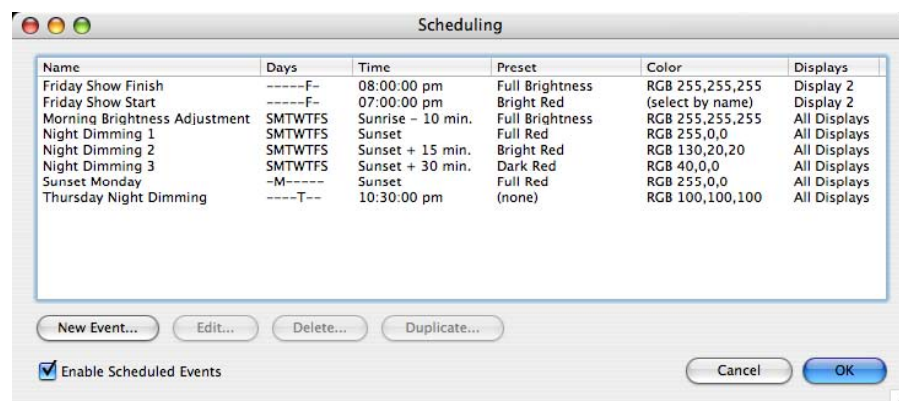
DarkAdapted Pro saves the state of independent display control across launches.

2.12 — Scheduled Event Execution (Pro Only)

Pro Scheduled event execution is only available if you have upgraded to DarkAdapted Pro. To upgrade, select **Register DarkAdapted Pro...** from the **Special** menu.

Many users desire gamma fading that operates on a schedule. For example, a planetarium operator may desire that DarkAdapted Pro dim the screen at the beginning of a show, or an air traffic controller may wish to brighten the screen at sunrise.

DarkAdapted Pro provides a flexible event scheduling mechanism, which is accessed via the **Scheduling Window**. The window may be activated by selecting **Scheduling...** from the **Edit** menu, or by typing **⌘G**, in which case the **Scheduling Window** appears, as illustrated below:



Scheduling Window

The control labeled *Enable Scheduled Events* specifies whether DarkAdapted Pro should execute any events you have defined. When the control appears with a check mark, DarkAdapted Pro adjusts gammas according to your predefined schedule. To prevent scheduled events from executing, click to remove the check mark from *Enable Scheduled Events*.

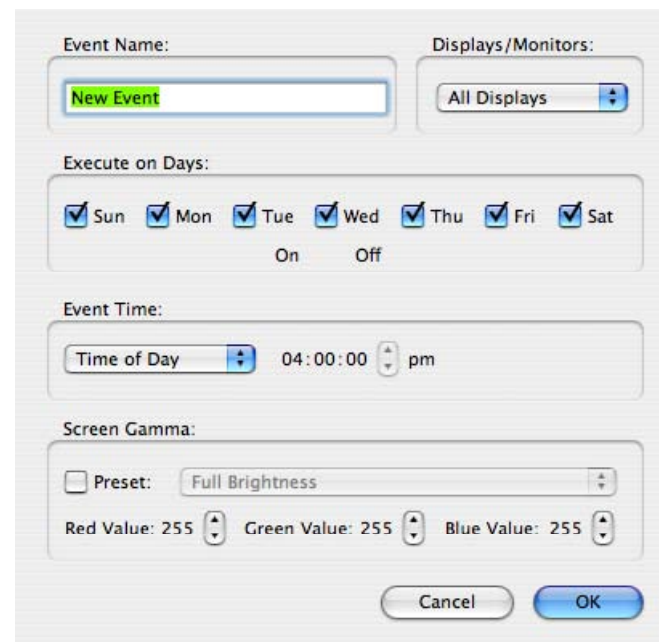
All events you have defined will appear in this window's scrolling display. You may select an event by clicking on the entry, or select multiple events by clicking while holding down your system's multiple-selection modifier key.

When one or more events are selected you may delete the selected event(s) by clicking the *Delete...* button. The events will be deleted after you confirm your decision in a dialog box, although you may skip the warning by holding down the **OPTION** key while clicking *Delete...*

To make a copy of the selected event, click the *Duplicate* button. The copy appears with a period and a number at the end, and is selected in the sorted list. You may then edit the copy as necessary.

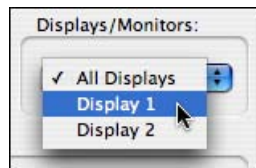
You may edit an event by selecting a single event, then clicking the *Edit...* button. You may also edit an event by double-clicking on the event in the scrolling listing.

You may create a new event at any time by clicking the *New Event...* button, in which case the **Edit Event Window** appears, as illustrated below. The **Edit Event Window** also appears when you edit an existing event.



Edit Event Window

Type a descriptive name for the event in the *Event Name:* text entry field. DarkAdapted Pro will warn you if you attempt to add an event with the same name as an existing event.




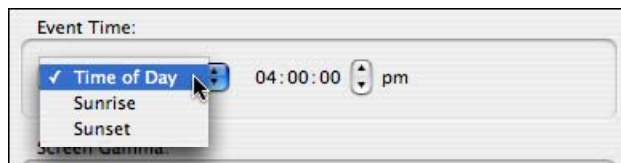
If you wish for your event to control all monitors in unison, select *All Displays* from the *Displays/Monitors:* pop-up menu. To instead control only a single monitor, select the display number from the pop-up menu.



The *Execute on Days* controls allow you to specify the days of the week that your event should execute. DarkAdapted Pro requires that you select at least one day of the week in order to save the event.

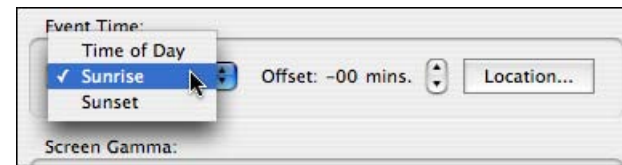
Click the *On* control to select all days of the week; click the *Off* control to deselect all days. Drag either control over one or more days of the week to apply the desired action to every day of week control that you drag over.

 Dragging the *On* or *Off* control to the desired day(s) of the week eliminates repetitive mouse-clicking, which is especially useful if you are defining several events. For example, to select only the weekend days (Sunday and Saturday), click *On* to select all of the days (if necessary), then drag the *Off* control across the weekdays to turn them off.



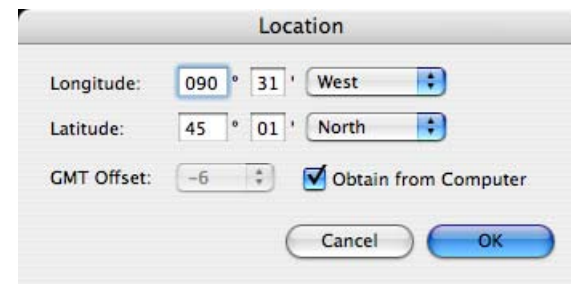
The *Event Time:* region is where you specify the time of day that the event should execute. From the pop-up menu, you may select *Time of Day*, *Sunrise*, or *Sunset*.

- When *Time of Day* is selected, a control appears wherein you may adjust the hour, minute, second, and am/pm state of the event. When you click on the hours, minutes, or seconds region of the control, it begins flashing. When a value is flashing, you may use the arrow controls to adjust it upward or downward. Click the *am/pm* region to alternate between *am* (morning) or *pm* (afternoon) times. The flashing ceases after five seconds, or when you click another region in the control.



- When you select wither *Sunrise* or *Sunset*, two controls appear. One is labeled *Offset*, and specifies how many minutes before or after sunrise/sunset the event should occur. You may adjust the *Offset* up or down by means of the arrow controls. So, for example, to define an event that will execute 30 minutes before sunset, select *Sunset* from the pop-up menu, then click the “down” arrow control until the *Offset* reads “-30” minutes. The *Offset* may be adjusted in one-minute increments, with a minimum of -60 and maximum of 60 minutes. The *Location* control is explained below.

When you define an event as occurring based on sunrise or sunset time, DarkAdapted Pro requires your location on Earth in order to provide accurate times. If you have never specified your location, the **Location Window** appears the first time you select *Sunrise* or *Sunset* from the pop-up menu. Thereafter, you may click the *Location...* button to change your location. The **Location Window** is depicted below:



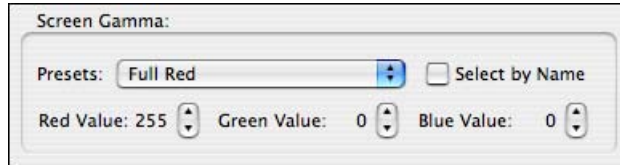
Location Window

Your longitude and latitude may be obtained from an atlas. Longitude is expressed in degrees and minutes; select *West* from the pop-up menu if your location is west of the Greenwich meridian (longitude increases as you move westward), or select *East* if your location is east of Greenwich (longitude increases as you move eastward).

Latitude is also expressed in degrees and minutes. Select *North* from the pop-up menu if your location is north of the equator; otherwise, select *South*.

GMT Offset is the number of hours that your time zone differs from Greenwich Mean Time. This value will change throughout the year if you observe daylight saving time. In most cases, it is best to select *Obtain from Computer*. You may also click to deselect *Obtain from Computer* and choose your offset manually from the pop-up menu.


Click *OK* to save your changes, or *Cancel* to discard them. If no valid location is specified, the *Event Time* pop-up menu in the **Edit Event Window** changes back to *Time of Day*. Closing the **Location Window** returns you to the **Edit Event Window**.



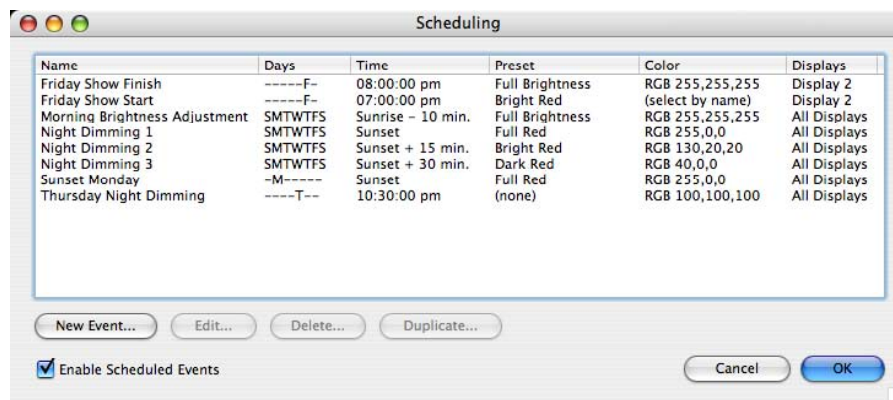
The **Edit Event Window's** *Screen Gamma* region is where you specify the gamma color that will be applied to the desired screen(s) when the event executes. You may select an existing preset via the *Presets:* pop-up menu, or define custom red, green, and blue values.

Clicking *Select by Name* forces DarkAdapted Pro to select the gamma color by its Preset name. This can be useful if you plan on replacing a preset (in the **Edit Presets Window**) with one with an identical name, but different color values. This saves the effort of redefining your events with different colors.

In most cases, however, it is best to leave *Select by Name* unchecked.

 If you delete a preset that is used by one or more scheduled events, DarkAdapted Pro will still be able to set the screen gamma to the deleted preset's former values, *unless* you check the *Select by Name* option. This is why it's best to leave *Select by Name* unchecked.

To save the changes you made in the **Edit Event Window**, click the *OK* button, and the window closes. To close the window without saving changes, click *Cancel*.



Scheduling Window

The various columns in the **Scheduling Window** include *Name*, which is simply the name you specified for the scheduled event in the **Edit Event Window**.

The *Days* column provides a visual representation of the days of the week on which the event will execute. Each entry in this column consists of seven characters, one for each day of the week, starting with Sunday and ending with Saturday.

If a scheduled event will execute on a particular day of the week, the first letter of the day's name appears; otherwise, a hyphen ("-") appears. So, an entry in the *Days* column of "**S**-----" denotes an event that occurs on Sunday only; the entry "**SMTWTFS**" indicates that an event occurs every day; and an entry reading "**---W-F-**" denotes an event that occurs only on Wednesdays and Fridays.

The *Time* column will display either the event's time of day, or that the event occurs at sunrise or sunset. If an event specifies sunrise or sunset, the offset (if any) in minutes appears here also.

The column titled *Preset* denotes the gamma preset applied to the event, if any. If the gamma value was specified manually in the **Edit Event Window**, the text "(none)" appears instead.


Color indicates the color that will be applied to the screen(s) when the event executes. If the **Edit Event Window** is used to specify *Select by Name*, as described above, the text "(select by name)" appears here, and DarkAdapted Pro will select the preset by its name when the event executes.

The *Displays* column indicates which display(s) will be affected by the scheduled event when it executes.

To save changes to the listed events, click the *OK* button, which also closes the **Scheduling Window**. Clicking *Cancel* closes the window, discarding any changes made since the **Scheduling Window** last opened, including any changes made in the **Edit Event Window**.

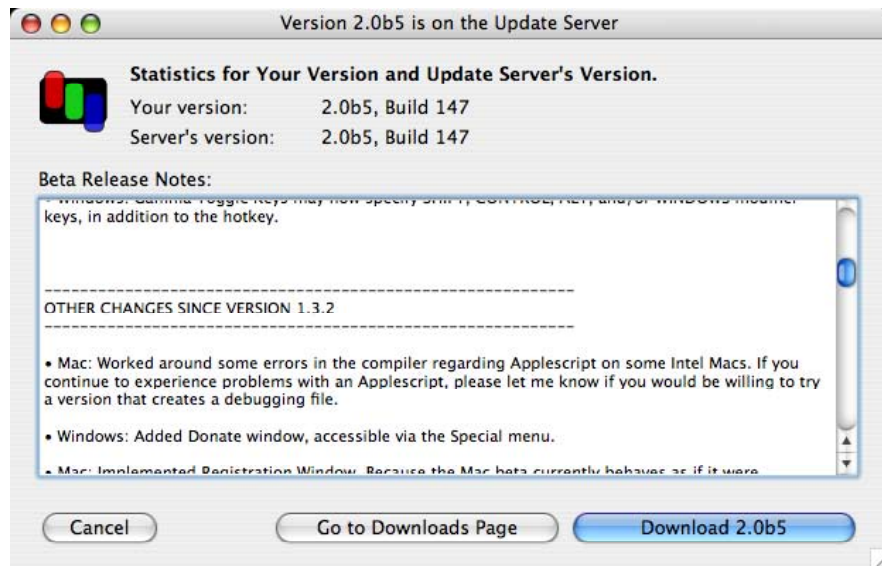
2.13 — Internet Update Checking

DarkAdapted is able to check for newer versions, provided you have an active Internet connection.

 Many error messages are the result of an inactive Internet connection. Make sure you are connected to the Internet before attempting to use DarkAdapted's Internet update checking.

To check for newer program versions, select *Check for Program Updates...* from the *File* menu.

If no update is required — DarkAdapted will present a dialog confirming that you are already up-to-date. If DarkAdapted determines that a newer version is available, the **Update Window** opens, as depicted below:



Update Window

Near the top of this window are listed the Version and Build Number for the currently-running copy of DarkAdapted (“*Your Version:*”) and for the *Newer Version:* available via the Internet.

The scrolling list may contain the latest changes in the new version, special instructions, program news, etc. The **Copy** command in the **Edit** menu may be used to transfer this text to another program.

Click the *Download Newer Version* button (at the bottom-right corner of the **Update Window**) to begin the download. A standard dialog will appear, where you may select the download destination and optionally change the download’s name.

Once the download begins, the two buttons *Go to Downloads Page* and *Download Newer Version* will disappear, replaced by a download progress display which reports the download’s status both numerically and graphically.

During a download, the *Cancel* button serves to terminate the download and close the window, after a warning dialog. When no download is in progress, clicking *Cancel* simply closes the **Update Window**.

Click the *Go to Downloads Page* button to open your default web browser and display DarkAdapted’s downloads page.

When you click the *Download Newer Version* button, the version of DarkAdapted that matches your platform (Mac OS X or Windows) is automatically selected for download. To instead download DarkAdapted for a different computing platform, right click (Mac: control-click) in a blank area of the **Update Window** to summon the window’s contextual menu, as shown below:



Update Window’s Contextual Menu

Select the desired version from the menu, then download the file to the desired location.

After successfully downloading an update, DarkAdapted instructs you to quit the program, expand the archive, and launch the new version to complete the update process.



You may force the **Update Window** to show — even if a newer version is not available — by holding down the **OPTION / ALT** key while you select **Check for Program Updates...** from the **File** menu. In such cases, some of the text in the **Update Window** will change, and the *Download Newer Version* button’s name will change to reflect the update server’s version.

Section 3: AppleScript Guide

3.1 — Introduction

Mac This section applies only to users running DarkAdapted for Mac OS X or Mac OS Classic. If you are using DarkAdapted for Windows, you may skip this section.

DarkAdapted contains extensive AppleScript support, allowing you to control almost every program feature and setting. This enables automated control of DarkAdapted from other programs or simple AppleScripts.

Additionally, you may obtain information concerning the current screen gamma, and store/retrieve preference settings.

A sample AppleScript is included with the standard DarkAdapted download.

3.2 — Command Reference

The following tables summarize DarkAdapted's AppleScript support. In the examples, the “-” character indicates that the script's line wraps to the following line; do not include the “-” character in your script.

Command:	activate
Syntax:	activate
Function:	Launches DarkAdapted if it is not already running, and brings the Main Window to the front of the window layering order.
Example:	<pre>tell application "DarkAdapted" activate end tell</pre>

Command:	quit
Syntax:	quit
Function:	Quits DarkAdapted if it is running.
Example:	<pre>tell application "DarkAdapted" quit end tell</pre>

Command:	savePreferences
Function:	Saves all of DarkAdapted's preference values, and the current gamma preset(s) or color values, for possible restoration with the <code>restorePreferences</code> command.
Example:	<pre>tell application "DarkAdapted" savePreferences end tell</pre>

Command:	restorePreferences
Syntax:	restorePreferences [parameter]
Parameters:	with restoringGamma <i>or</i> without restoringGamma
Function:	If <code>savePreferences</code> has previously been called, all of DarkAdapted's preference values are restored to their saved values. Use <code>with restoringGamma</code> to also restore the saved gamma setting(s) (or the saved preset(s), if selected).
Notes:	<p><code>restorePreferences</code> has no effect if <code>savePreferences</code> has not previously been called.</p> <p>If you specify <code>with restoringGamma</code>, the most recently stored gamma setting or preset is restored. If the gamma has never been stored, it remains unchanged.</p>
Examples:	<pre>tell application "DarkAdapted" restorePreferences with restoringGamma restorePreferences without restoringGamma end tell</pre>

Command:	<code>independentDisplayControl</code> (DarkAdapted Pro only)
Syntax:	<code>independentDisplayControl [parameter]</code>
Parameters:	<code>true</code> or <code>false</code>
Function:	<p>Specifies whether DarkAdapted Pro should control all displays in unison, or each display independently. Specify <code>true</code> to control displays independently, with a separate Main Window for each display, or <code>false</code> to control all displays in unison, controlled by a single Main Window.</p> <p><i>DarkAdapted Standard simply ignores this command; it only works with DarkAdapted Pro.</i></p>
Examples:	<pre>tell application "DarkAdapted" independentDisplayControl true independentDisplayControl false end tell</pre>

Command:	<code>selectDisplay</code> (DarkAdapted Pro only)
Syntax:	<code>selectDisplay [parameter]</code>
Parameters:	An integer corresponding to one of your connected displays. Specify <code>0</code> for the main display, <code>1</code> for the second display, and so on.
Returns:	boolean
Function:	<p>Set the desired display to control via subsequent AppleScript commands, entering Independent Display Mode if necessary. If you specify a nonexistent display, the closest valid display is selected.</p> <p>Setting the display to 1 or higher enables Independent Display Mode, if necessary.</p> <p>This function returns <code>false</code> if a nonexistent display is specified, in which case DarkAdapted selects the closest valid display. Otherwise this function returns <code>true</code>.</p> <p><i>DarkAdapted Standard simply ignores this command; it only works with DarkAdapted Pro.</i></p>
Examples:	<pre>tell application "DarkAdapted" if not selectDisplay 0 then beep end tell</pre>

Command:	<code>getGamma</code>
Syntax:	<code>getGamma [parameter]</code>
Parameters:	with percentages or without percentages
Returns:	string
Function:	<p>Retrieves the current gamma settings in a comma-delimited string.</p> <p>If <code>with percentages</code> is passed, the values are returned as percentage values, including tenths of a percent.</p> <p>If <code>without percentages</code> is passed, values are returned in the range 0-255.</p> <p>The returned values represent the gamma's red, green, and blue components, respectively.</p>
Examples:	<pre>tell application "DarkAdapted" if not setGamma preset "Full Brightness"~ then return -- sets the gamma to 100% display dialog getGamma with percentages~ -- displays "100.0,100.0,100.0" display dialog getGamma without percentages~ -- displays "255,255,255" end tell</pre>

Command:	setGamma
Syntax:	setGamma value [parameter] <i>or</i> setGamma preset [parameter]
Parameters:	<p>If using <code>setGamma value [parameter]</code>, the parameter must be passed as a comma-delimited string of the three integers which represent the desired gamma's red, green, and blue components, respectively. Each component value must be in the range zero to 255, with 255 representing full brightness.</p> <p>If using <code>setGamma preset [parameter]</code>, the parameter must be passed as a valid preset name (as it appears in the Main Window's Presets: pop-up menu).</p>
Returns:	boolean
Function:	Implements a gamma fade. Returns <code>true</code> if an allowable value or recognized preset is received, or <code>false</code> if an illegal value or unrecognized preset name is passed.
Notes:	DarkAdapted will not allow the gamma value to be set to "0,0,0" — because a scripting error could also result in three zero-values being passed. To turn the screen off, use, for example, "0,0,1"
Examples:	<pre>tell application "DarkAdapted" if not (setGamma value "255,255,255") then~ beep -- full brightness if not (setGamma preset "Full Green") then~ beep end tell</pre>

Command:	displayMainWindow
Syntax:	displayMainWindow [parameter]
Parameters:	with detailsShowing <i>or</i> without detailsShowing
Function:	Use with <code>detailsShowing</code> to display the Main Window at full size, or use <code>without detailsShowing</code> to minimize the window.
Examples:	<pre>tell application "DarkAdapted" displayMainWindow with detailsShowing displayMainWindow without detailsShowing end tell</pre>

Command:	gangSliders
Syntax:	gangSliders [parameter]
Parameters:	true <i>or</i> false
Function:	Specifies whether or not the gamma control sliders move in unison when adjusting one slider. Specify <code>true</code> to gang the gamma control sliders for the selected display(s), or <code>false</code> to set the sliders to independent control.
Examples:	<pre>tell application "DarkAdapted" gangSliders true gangSliders false end tell</pre>

Command:	restoreGammaOnLaunch
Syntax:	restoreGammaOnLaunch [parameter]
Parameters:	true <i>or</i> false
Function:	Specifies whether or not DarkAdapted should restore previous gamma settings when it is launched. Specify <code>true</code> to restore previous settings at launch, or <code>false</code> to start up at full brightness.
Examples:	<pre>tell application "DarkAdapted" restoreGammaOnLaunch true restoreGammaOnLaunch false end tell</pre>

Command:	fadeSteps
Syntax:	fadeSteps [parameter]
Parameters:	1, 15, 30, 60, 90, <i>or</i> 120
Returns:	boolean
Function:	Specifies the number of steps in gamma fades. Returns <code>true</code> if an allowable value is received, or <code>false</code> if an illegal value is passed.
Example:	<pre>tell application "DarkAdapted" if not (fadeSteps 15) then beep end tell</pre>

Command:	toggleKeys
Syntax:	toggleKeys [parameter]
Parameters:	<p>Any combination of two or more of the following: <code>shift</code>, <code>control</code>, <code>option</code>, <code>alt</code>, <code>command</code>, separated by commas.</p> <p>Optionally, you may also pass <code>keycode='X'</code> and <code>keytext='@Y'</code> where <code>X</code> references the Macintosh hardware keycode (in <i>decimal</i>) for the desired key, and <code>Y</code> references either the character printed on the key or its ASCII value.</p> <p>If passing the ASCII value, precede the value by the <code>@</code> character. You must pass both <code>keycode</code> and <code>keytext</code>, or neither.</p>
Returns:	boolean
Function:	Specifies the modifier keys, and optionally changes the non-modifier key, that must be held down in order to toggle the gamma setting between full brightness and its last non-full value. Returns <code>true</code> if a successful command is received, or <code>false</code> if an illegal value is passed.
Example:	<pre>tell application "DarkAdapted" if not (toggleKeys "shift, control, option") then beep -- just changes modifiers, not key if not (toggleKeys "shift, keycode='36', keytext='@13' then beep -- changes gamma - toggle keys to Shift + Return if not (toggleKeys "control, keycode='3', keytext='F' then beep -- changes gamma - toggle keys to Control + F end tell</pre>

Command:	gammaRefreshPeriod
Syntax:	gammaRefreshPeriod [parameter]
Parameters:	Integer in the range zero to 60.
Function:	Specifies how often the screen gamma will be manually re-applied. Enter 0 (zero) to turn off gamma refreshing, or specify a period in seconds between 1 and 60.
Example:	<pre>tell application "DarkAdapted" gammaRefreshPeriod 30 end tell</pre>

Command:	doSliderUpdating
Syntax:	doSliderUpdating [parameter]
Parameters:	with trackingfades <i>or</i> without trackingfades
Function:	Controls whether sliders track gamma fades.
Examples:	<pre>tell application "DarkAdapted" doSliderUpdating with trackingfades doSliderUpdating without trackingfades end tell</pre>

Command:	reportGammaValues
Syntax:	reportGammaValues [parameter]
Parameters:	with percentages <i>or</i> without percentages
Function:	Controls whether the text readouts (to the right of the gamma sliders) report gamma values as percentages or as raw values.
Examples:	<pre>tell application "DarkAdapted" reportGammaValues with percentages reportGammaValues without percentages end tell</pre>

Command:	updateChecking
Syntax:	updateChecking [parameter]
Parameters:	with prereleases <i>or</i> without prereleases
Function:	Specifies whether DarkAdapted checks for alpha or beta ("pre-release") versions when performing an Internet update check.
Examples:	<pre>tell application "DarkAdapted" updateChecking with prereleases updateChecking without prereleases end tell</pre>

Command:	updateCheckFrequency
Syntax:	updateCheckFrequency [parameter]
Parameters:	One of the following strings: <i>weekly or monthly or via menu only</i>
Function:	Specifies whether and how often DarkAdapted performs an automatic Internet update check for new versions.
Examples:	<pre>tell application "DarkAdapted" updateCheckFrequency "weekly" updateCheckFrequency "monthly" updateCheckFrequency "via menu only" end tell</pre>

Section 4: Troubleshooting

4.1 — Error Messages in Windows

Some versions of Windows do not automatically adjust an application's use of memory. If DarkAdapted exceeds the amount of RAM allocated to it, the program may display an error message, or it may crash.

If you are running DarkAdapted X under Mac OS X, then this section is not applicable.

Many error messages are memory related, so — if you frequently encounter error messages, you may wish to allocate more memory to DarkAdapted. Consult your computer's documentation as to how you may allocate more memory to an application program.

If you encounter error messages that you believe may be caused by an error within DarkAdapted, then take careful note of any error messages that appear, along with steps that lead to a reproducible error, and e-mail the information to us. We'll do what we can to identify, reproduce, and correct the problem.

Make sure you have 2 MB available RAM in which to run DarkAdapted, especially if you have added many presets or scheduled events. DarkAdapted runs well under virtual memory and with most popular memory-doubling technologies.

If problems persist, try restarting in "safe mode," as described in your computer's documentation.

4.2 — My Monitor is Stuck at Reduced Brightness!

This usually occurs if DarkAdapted or your system has crashed, leaving your monitor's gamma ramp in a modified state.

First off, do not panic! It's easy to restore your monitor to full brightness.

Win Simply restart your machine to return your monitor to its default gamma setting. If this is not effective, open your *Display* control panel and click the *Settings* tab. Change your *Colors* control to a different value and back again. As a last resort, try reinstalling your video driver to clear the "stuck" gamma preference.

Mac Under Mac OS X, select System Preferences... from the Apple menu. Select the *Displays* preference pane, then click on the *Color* tab. Click to select a different *Display Profile*, then select the original

(or any desired) profile to reset your gamma. If this does not work, you may have to restart your machine.

4.3 — Common Problems

DarkAdapted does nothing on my system.

This occurs most often with Windows-compatible machines. While DarkAdapted functions well with many Windows systems, it cannot support all possible hardware/software combinations. Generally speaking, if your hardware supports standard gamma change routines, DarkAdapted will work on it.

DarkAdapted doesn't affect some of my screen colors.

Windows does not consider white when modifying gamma values. Some users have reported success via changing the Windows theme to the "Classic" value.

My gamma setting is not persistent.

Most systems will reset the gamma ramp when you restart, when a screen saver exits, or when your system sleeps and wakes. DarkAdapted will not "know" about this event and may not reset the gamma. The solution is to enable the *Refresh gamma values* control in the **Preferences** window.

DarkAdapted contains several presets for Red and Green; why not Blue?

DarkAdapted was developed to help preserve the user's dark adaptation. Red is most widely regarded as the best choice for this purpose, while green also has its adherents. Blue is not generally recommended to preserve dark adaptation, so no presets are supplied in the blue range.

If you'd like to add blue presets, check out the supplied file "Blue Presets," which is part of the DarkAdapted download package.

DarkAdapted does not affect all of my monitors.

Version 1.3.1 introduced multiple monitor support. If you are using version 1.3.1 or later, make sure you remove any prior versions of DarkAdapted, then restart your system to enable control of all connected displays.

I receive error messages when I open the program.

If you are running DarkAdapted for Windows, then the first issue you should suspect is a memory problem. Try allocating more memory to DarkAdapted as described in your computer's documentation or on-line help system.

It is also possible that the file "DarkAdapted Prefs File" has become damaged. In Mac OS X, "DarkAdapted Preferences" is located in the active User's

"Library" folder, in the "Preferences" folder. In Windows, the file is located in the same directory as DarkAdapted.

The preferences file must remain unlocked and in place while you use the program; otherwise, DarkAdapted will be unable to write preference information, and an error message will be generated.

I receive error messages when I quit the program.

See the above discussion concerning the file "DarkAdapted Prefs File." Your startup disk must be writable (i.e., it cannot be a CD-ROM or other read-only medium). Otherwise, DarkAdapted will be unable to save preference information when you quit the program, and an error message will appear.

I receive error messages while using the program.

If DarkAdapted reports an error while you are using the program, one of the following is likely to be true:

- The program has run out of application memory. There isn't enough memory to store additional data or display a graphic. This should not occur when running DarkAdapted X under Mac OS X, because Mac OS X dynamically allocates memory to application programs.
- The program has attempted to write data to a disk that is locked or read-only. This may occur when saving a file, when the program writes to its preferences file, or when writing temporary files to disk.
- The program has attempted to access a file that has been moved or deleted since DarkAdapted last attempted to read from it.
- The program contains an error that causes unexpected results that have not been anticipated (a "bug").

Make sure also that DarkAdapted and its support files are installed on an unlocked disk, and that you have started your computer from an unlocked, writable startup disk.

If you believe you have found a bug in the program, let us know! DarkAdapted contains many thousands of lines of programming code, and it is unrealistic for us to expect that we have anticipated every possible situation. If the situation is repeatable, please outline the steps that are required to reproduce the problem. Support information is described in the following Section.

4.4 — Technical Support

Consult the "Read Me" file in the Documentation folder — or click the link in DarkAdapted's **Main Window** — for technical support contact information.

Additional information is available at the [DarkAdapted web site](#).