



DarkAdapted

How to Install DarkAdapted

© 2001–2007 Stephen E. Hutson • All Rights Reserved

Overview

DarkAdapted is supplied as follows:

Mac Macintosh users: DarkAdapted is supplied for the Macintosh on a Mac disk image.

Win Windows users: DarkAdapted is supplied for Windows as a .zip archive. Extract the archive and place the DarkAdapted folder

This installation guide is divided into three portions:

- [First-Time Installation Instructions — Macintosh](#)
- [First-Time Installation Instructions — Windows](#)
- [Upgrade Instructions — Macintosh](#)
- [Upgrade Instructions — Windows](#)

First-Time Installation Instructions — Macintosh

 These instructions are applicable to Macintosh users:

1. Locate and open the Macintosh disk image you downloaded.

This step may not be necessary if your web browser automatically opens downloaded disk images. If this is the case, the disk image has already opened in a new window, containing DarkAdapted and other files, and you may skip to Step 2.

If the above paragraph does not apply to you, locate the DarkAdapted disk image you downloaded, as illustrated below (yours may be named slightly differently):



Double-click to mount the disk image and open a new window. If double-clicking doesn't work, locate Disk Utility in your Utilities folder (which is in your Applications folder), and drag the disk image file over the Disk Utility icon to open it.

The disk image window will appear similar to the below illustration:



2. Read any important information.


Read any READ ME or late-breaking news documents.

3. Open DarkAdapted by double-clicking its icon.

Then, double-click on the “DarkAdapted X” application icon. DarkAdapted will offer to copy its folder to your Applications folder, as shown below:



Click the *Install* button to copy DarkAdapted to your Applications folder. DarkAdapted will then open the new copy and its enclosing folder.

 If there is already a folder named “DarkAdapted Folder” in your Applications folder, DarkAdapted will offer to replace the existing installation, or to rename the old DarkAdapted folder. In no event will DarkAdapted replace or overwrite any files on your hard disk.

The installation will proceed, and the new copy of DarkAdapted will be revealed in your Applications folder. Then, the new copy automatically opens, and the disk image is put away.

You may want to keep a copy of the downloaded disk image for safekeeping.

That's it! Enjoy DarkAdapted and DarkAdapted Pro!

First-Time Installation Instructions — Windows

Win These instructions are applicable to Windows users:

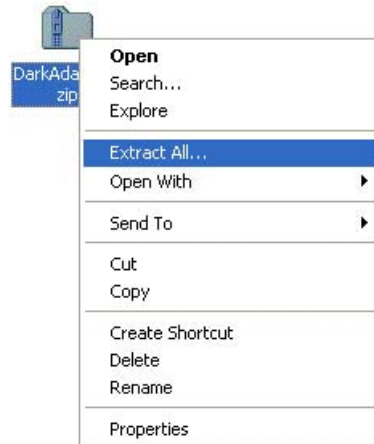
1. Locate the .zip archive you downloaded.

Locate the DarkAdapted .zip archive you downloaded, as illustrated below (yours may be named slightly differently):



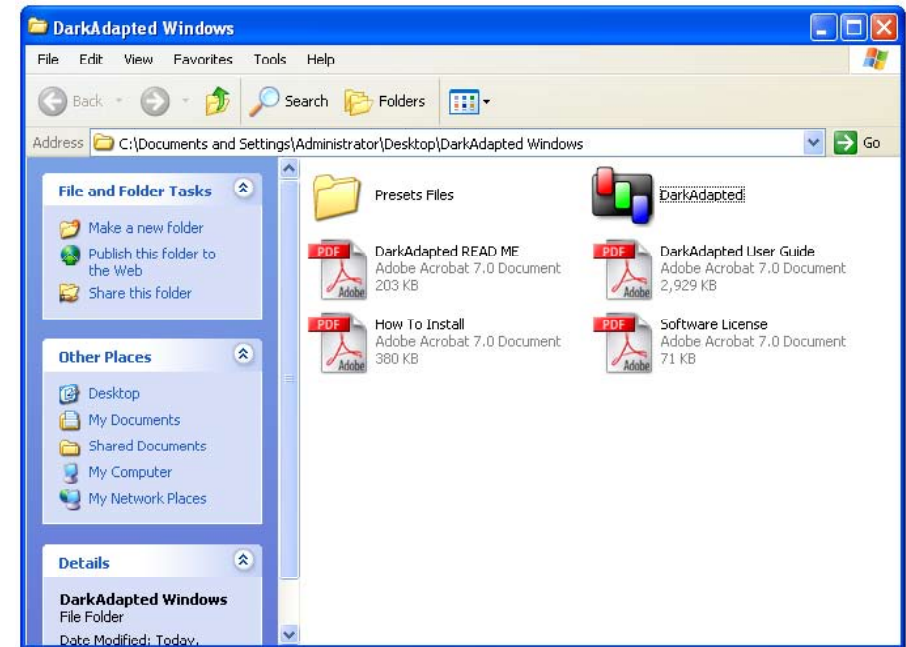
2. Extract (decompress) the .zip archive.

Right click on the archive as shown below, and select “Extract All...” from the contextual menu, as shown below:



If “Extract All” does not appear as an option, download an install a utility that is able to decompress .zip files.

The extracted folder should appear similar to the below illustration:



3. Read any important information.

Read any READ ME or late-breaking news documents.

4. Copy the extracted folder to the desired location on your hard disk.

Drag the extracted folder to any location on your hard disk. We recommend storing DarkAdapted with your other program files.

5. Open DarkAdapted.

Double-click on the DarkAdapted executable to open the program. You may want to keep a copy of the downloaded archive for safekeeping.

That's it! Enjoy DarkAdapted!

Upgrade Instructions — Macintosh

Mac These instructions are applicable to Macintosh users:

You probably want to preserve any custom Presets files, AppleScripts, or any other changes you have made to your DarkAdapted folder, so the below instructions allow you to preserve these items.

Begin by following the instructions for First-Time Installation, and select the *Install* options (not the *Delete* option) to keep your old installation intact. (See [First-Time Installation Instructions — Macintosh](#).) Then, continue with Step 4 below:

Step 4: Restore Your Presets and AppleScripts.

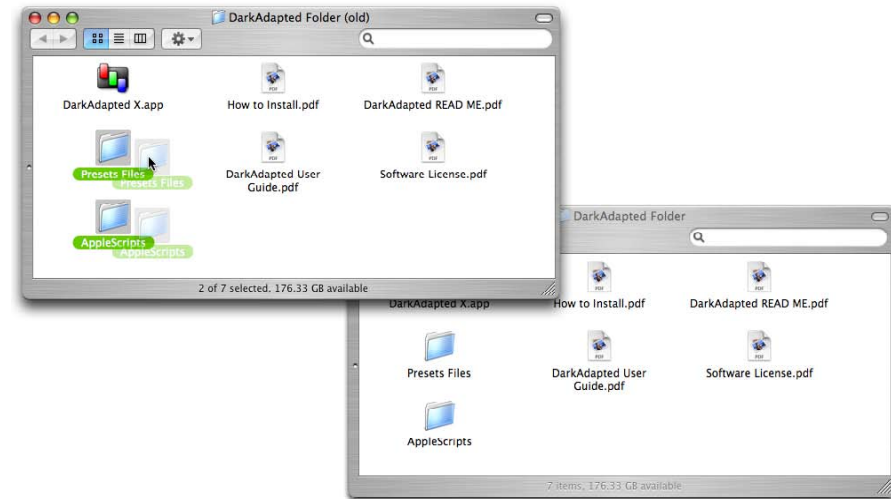
This step may not be necessary if you have not added any custom Presets or AppleScripts to your DarkAdapted Folder in the past. If you have not added or modified anything in your previous DarkAdapted Folder, you may skip to Step 5.

- First, locate your previous installation of DarkAdapted. It will be in your Applications folder, named **DarkAdapted Folder (old)**, and it may have a number after the folder name.
- Next, locate your new installation of DarkAdapted. It will be in your Applications folder, named **DarkAdapted Folder**, and it may have a number after the folder name.

Arrange windows in the Finder so that you can see windows for both of the folders identified above and listed below:

- **DarkAdapted Folder (old)**
- **DarkAdapted Folder**

In the folder **DarkAdapted Folder (old)**, select *only* the “Presets” and the “AppleScripts” folders, as illustrated below. Drag these folders to your existing DarkAdapted installation window, replacing any earlier versions.



Copy anything else you may have added to your DarkAdapted folder from **DarkAdapted Folder (old)** to **DarkAdapted Folder**.

Step 5: Delete Your Old Installation.

Once you are satisfied that there is nothing you need in the **DarkAdapted Folder (old)** folder, you may delete the folder **DarkAdapted Folder (old)**.

That's it! Enjoy DarkAdapted and DarkAdapted Pro!

Upgrade Instructions — Windows

Win These instructions are applicable to Windows users:

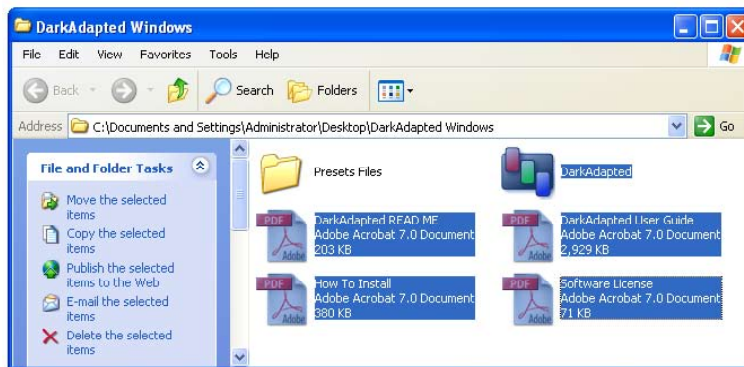
You probably want to preserve any custom Presets files or any other changes you have made to your DarkAdapted folder, so the below instructions allow you to preserve these items.

Step 1: Mount or decompress the downloaded file.

Decompress (expand) the downloaded .zip file. Open the expanded .zip file's contents in one window, and your existing DarkAdapted installation in another window. For instructions on how to identify and open the .zip file image, see [First-Time Installation Instructions — Windows](#).

Step 2: Update the application program and documentation.

In the expanded archive's DarkAdapted folder, select everything *except* for the “Presets” folder, as shown below. Drag these items to your existing DarkAdapted installation window, replacing any earlier versions.



That's it! You may want to keep a copy of the downloaded archive for safe-keeping. Enjoy your new version of DarkAdapted!